

MASCARA BRUSHES FOR *stunning LADY*

VOLUME & CURL

281022 burlesqueBEAUTY



Ø 8,75 mm
LENGTH 27,0 mm
VISCOSITY medium



- Slightly woman-shape for extra push-up effect
- Bristles at the tip for easily reworking and definition
- Special gaps between the bristle rows act as volume reservoirs

311283 cuteSEDUCTION



Ø 8,5 mm
LENGTH 26,0 mm
VISCOSITY medium



- Varying fiber softness
- Curved brush shape for an extra push-up effect
- A real eye-catcher at the POS

311526 lovelyLASHES



Ø 6,7 mm
LENGTH 26,0 mm
VISCOSITY medium to high



- A curved brush that is ideally adapted to the shape of the eyeball
- EOSdelta2K fiber with its hard core, soft surface and triangular shape lifts the lashes upwards
- Lash separation thanks to SEPA fiber tip treatment

311298 lashDETECTIVE



Ø 8,7 mm
LENGTH 26,0 mm
VISCOSITY medium to high



- Extraordinary spiral-shaped brush
- The tip of the brush is made with the GEKA fibreDREAMS™ fiber
- The asymmetrical part of the brush is made with EOS fibers which ensure a perfect separation

311312 gracefulQUEEN



Ø 8,0 mm
LENGTH 26,0 mm
VISCOSITY medium



- 3 technologies: SEPA grinding, HYPNO and SIAM cut
- Long fibers for perfect separation
- Short fibers for optimum volume

311511 curlQUEEN



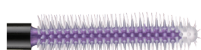
Ø 8,0 mm
LENGTH 26,0 mm
VISCOSITY medium



- Curved brush shape for ultimate lash swing
- Designed for fitting perfectly to the lash line
- Two-component EOS2K fiber with harder inner core and softer outside material

VOLUME & SEPARATION

281051 pureDEFINITION



Ø 7,2 mm
LENGTH 27,0 mm
VISCOSITY medium



- Bi-injected Sandwich technology
- Slight hour-glass shape is perfectly adapted to the lash line
- Alternate rows of bristles and discs create defined volume

311114 lashDIAMOND



Ø 7,0 mm
LENGTH 26,0 mm
VISCOSITY medium to high



- EOS fiber for optimal formula application
- HYPNO cut with 4 volume zones
- SEPA technology for superbly sparkling separation

311467 endlessDEFINER



Ø 10,0 mm
LENGTH 26,0 mm
VISCOSITY medium



- Woman-shaped brush made out of GEKA's EOS 2K fiber
- SEPA bristle treatment for improved separation
- Closed surface for an even bulk delivery

311646 tenderLOOK



Ø 7,5 mm
LENGTH 26,0 mm
VISCOSITY medium



- Cylindrical shape with a conical tip
- Bio-based EOSdelta green FIBER
- Great combing effect due to the stiff fiber and triangular shaped fiber cross-section

311551 seventhHEAVEN



Ø 9,5 mm
LENGTH 30,0 mm
VISCOSITY medium



- XXL brush for a super-volumizing effect
- Optimal lengthening and separation due to GEKA's SEPA technology
- Special EOSdelta 2K fiber

311315 bigBANG



Ø 10,5 mm
LENGTH 30,0 mm
VISCOSITY medium



- XXL brush coats every lash with one stroke
- 4 grooves of the HYPNO cut act as a bulk reservoir
- SEPA bristle treatment for improved lash separation

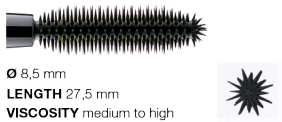


Bottle: 370309
Cap: 22871

MASCARA BRUSHES FOR *stunning LADY*

VOLUME & LENGTHENING

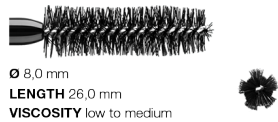
28413 push-upBRUSH



Ø 8,5 mm
LENGTH 27,5 mm
VISCOSITY medium to high

- Horizontal and vertical bristles for simple, precise application
- Bristles at the tip for an extra push-up effect
- Fantastic pay-off

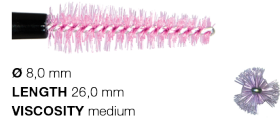
311320 lashDUCHESS



Ø 8,0 mm
LENGTH 26,0 mm
VISCOSITY low to medium

- EOS fibers for super volume
- HYPNO cut for increased mascara absorption
- SEPA polish for optimum lengthening and separation

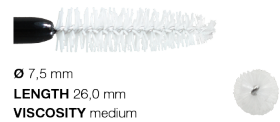
311457 endlessSPHERE



Ø 8,0 mm
LENGTH 26,0 mm
VISCOSITY medium

- The edges of the EOSdelta fiber separate the eyelashes perfectly
- HYPNO cut with a mix of longer and shorter bristles
- Due to the grooves of the brush, more bulk can be transported onto the lashes

311564 tropicalEYES



Ø 7,5 mm
LENGTH 26,0 mm
VISCOSITY medium

- Made of brand-new sunshineFIBER™ for extreme volume with minimal effort
- A high number of reservoir zones allowing maximum lash delivery of bulk
- Classical brush shape for a make-up finish in one stroke

311628 charmingLASHES



Ø 7,5 mm
LENGTH 26,0 mm
VISCOSITY medium to high

- Precise application thanks to pointed brush tip
- Exclusive two-component fiber EOSbombyx2K with notches for an impressive volume effect
- Strong fiber reliably separates and lengthens the lashes

311550 galacticEYES

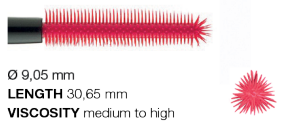


Ø 9,9 mm
LENGTH 30,0 mm
VISCOSITY medium to high

- Woman-shaped brush made of GEKA's two-component EOS2K fiber
- Ensures application from root to tip
- Gives lashes impressive volume, ultimate swing and major length

EXTRA VOLUME

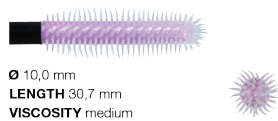
28595 boombasticBRUSH



Ø 9,05 mm
LENGTH 30,65 mm
VISCOSITY medium to high

- 3 giant reservoir zones for boombastic volume
- Spherical brush head for precise application
- Super-soft bristles for infinite length

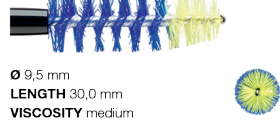
28958 lashDIVINE



Ø 10,0 mm
LENGTH 30,7 mm
VISCOSITY medium

- Bi-injected Sandwich technology
- Mix of shorter and longer bristle rows for maximum volume and definition at the same time
- Bristles on the tip for easily reworking and reaching of tiny lashes

311199 provokingLASHES



Ø 9,5 mm
LENGTH 30,0 mm
VISCOSITY medium

- 2 application zones
- Improved volume thanks to improved reservoir
- hybrITION technology for XXL volume

311486 wonderfulVENUS



Ø 9,0 mm
LENGTH 30,0 mm
VISCOSITY medium

- A big brush with a big wire diameter for XXL volume effects
- Innovative EOS 2K fiber with a stiffer core and softer surface
- SEPA fiber treatment for improved separation

311513 dazzlingEYES



Ø 10,5 mm
LENGTH 30,0 mm
VISCOSITY medium to high

- 4 special reservoir zones for bulk collection
- Short bristles enable great bulk deposit, long bristles separation and volume
- Super fast bulk delivery



Bottle: 370309
Cap: 22871

MASCARA BRUSHES FOR *stunningLADY*

TREATMENT & STYLING

311273 lashTWIST



Ø 8,0 mm
LENGTH 25,0 mm



- Convenient, twisted helix-shaped brush
- fibreDREAMS™ fiber with innovative eyelets
- Improved formula pick-up and application

311325 velvetCURVE



Ø 7,9 mm
LENGTH 25,0 mm



- fibreDREAMS™ fiber
- Especially rich formula application
- Extra combing zone for easier application

311665 stunningLOOK



Ø 7,5 mm
LENGTH 26,0 mm



- A classic cylindrical conical shaped brush that has 2 special features:
- HYPNO cut with long and short bristles
- EOSbombyxgreen fiber with 3 benefits in 1

311314 mermaidLOOK



Ø 10,0 mm
LENGTH 26,0 mm



- Asymmetrical ball cut for extra push
- Convenient application on shorter lashes
- In-house made EOS volume fiber

311627 lashLOVE



Ø 8,0 mm
LENGTH 26,0 mm



- sunshineFIBER™ with its grooves provides great volume results
- Also the 5 grooves of the HYPNO cut act as bulk reservoir zones
- SEPA treated fiber tips separate the lashes

HAIR

311610 delicateDESIGNER



Ø 7,5 mm
LENGTH 25,0 mm



- A fiber brush for great hair coloration results
- The EOSbombyx fiber with its notches on the surface grabs the hair gently
- Reliable combing and even color finish thanks to the stiff fiber

311613 matchlessBRUSH



Ø 7,5 mm
LENGTH 25,0 mm



- Express application due to the EOSFoam fiber
- The fiber's softer, foamed outer shell absorbs plenty of formulation
- The stable core of the fiber combs the hair and distributes the bulk evenly

311287 greenQUEEN



Ø 8,0 mm
LENGTH 26,0 mm



- Sustainable plant-based greenLINE fiber
- Impressive hair combing
- Even & streak free coloration as the fiber does not spread its ends



Bottle: 370309
Cap: 22871

MASCARA BRUSHES FOR *stunning LADY*

PRIMER

311666 heavenlyEYES  



Ø 7,5 mm
LENGTH 26,0 mm



- The brush looks very classic due to its shape and size
- But its secret is its EOSfoamgreenFIBER
- A sustainable fiber with a spongetype surface that easily absorbs and applies formulas

311171 temptingEYES 



Ø 7,0 mm
LENGTH 26,0 mm



- HYPNO cut creates a distinctive cross section with 4 edges
- fibreDREAMS™ fiber
- Wing-like loops for optimum formula absorption and application

311566 volumeDESIGNER 



Ø 8,5 mm
LENGTH 26,0 mm



- A conical shaped brush
- Convenient and defined application
- Innovative sunshineFIBER™ with imposing fiber profile serves as real volume-booster

311617 lashFLASH  



Ø 7,0 mm
LENGTH 26,0 mm



- A cylindrical brush with a conical tip
- HYPNO cut with 3 volume and 3 separation zones
- Bio-based greenlineFIBER made of the castor oil plant



Bottle: 370309
Cap: 22871

8