

# Material Guide Roll

**The material guide roll effectively eliminates wrinkling of textiles and is the perfect complement to universal and shafted roll-off units.**

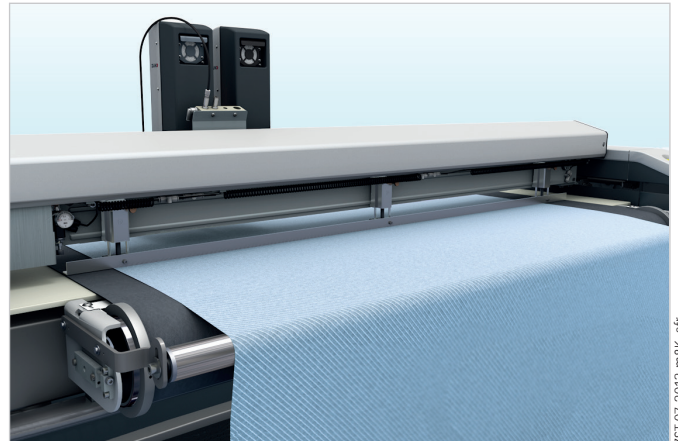
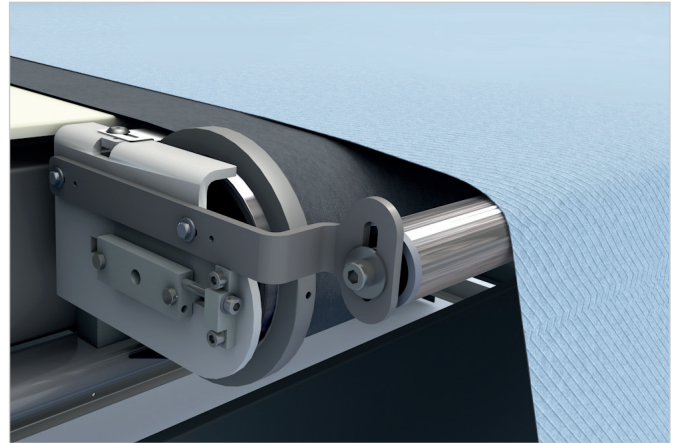
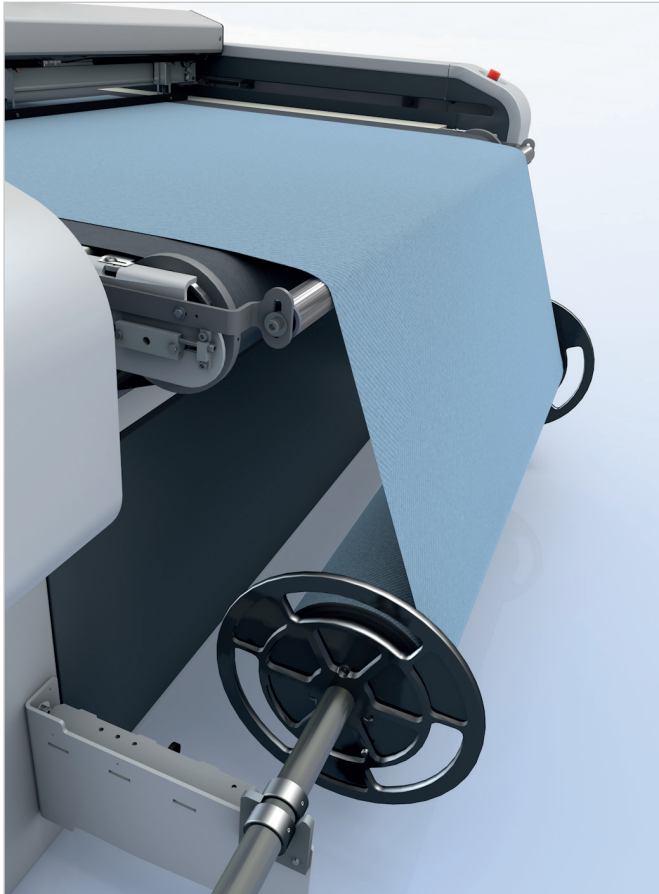
Material handling can be challenging when it comes to rolled textiles: wrinkles, stretch, or unevenly rolled materials can lead to poor cut quality.

The material guide roll dramatically facilitates wrinkle-free processing. This handy option is

mounted on the back of the cutter and helps spread, and evenly advance, fabric and similar materials onto the cutting surface.

The material guide roll is always used in conjunction with a roll-off unit. With the guide roll in place, the material is not fed directly onto

the clingy conveyor belt; instead, it glides over the smooth roll first, which dramatically reduces the potential for wrinkling.



ZST-07-2013-m&k\_sfr

## Details

Compatible with Zünd universal and shafted roll-off units (active/passive).

Compatible with **G3**, **S3**.

## Advantages at a glance

Efficiently minimizes friction and wrinkles during material advances.

Significantly enhances cut quality in textile applications.

Quick and easy installation.