

# STANDARD COLOUR GUIDE

*'Development and production of closures and closing concepts for packaging'*

<b>WHITE 01</b>  PMS WHITE	<b>BEIGE 06</b>  PMS 7499	<b>YELLOW 10</b>  PMS 107	<b>YELLOW 07</b>  PMS 108	<b>YELLOW 01</b>  PMS 128	<b>YELLOW 03</b>  PMS 7404
<b>YELLOW 06</b>  PMS 109	<b>YELLOW 23</b>  PMS 129	<b>YELLOW 11</b>  PMS 7405	<b>YELLOW 20</b>  PMS 123	<b>YELLOW 04</b>  PMS 1225	<b>YELLOW 09/16</b>  PMS 2010
<b>YELLOW 18</b>  PMS 1235	<b>YELLOW 22</b>  PMS 137	<b>ORANGE 15</b>  PMS 137	<b>ORANGE 13</b>  PMS 138	<b>YELLOW 14</b>  PMS 7569	<b>ORANGE 10</b>  PMS 1595
<b>ORANGE 08</b>  PMS 165	<b>RED 24</b>  PMS 179	<b>ORANGE 01</b>  PMS 2034	<b>RED 03</b>  PMS 2033	<b>RED 16</b>  PMS 1795	<b>RED 27</b>  PMS 1805
<b>RED 07</b>  PMS 180	<b>RED 06</b>  PMS 200	<b>RED 18</b>  PMS 7621	<b>RED 22</b>  PMS 201	<b>BORDEAUX 03</b>  PMS 690	
<b>PURPLE 09</b>  PMS 7665	<b>PURPLE 08</b>  PMS 7656	<b>PINK 04</b>  PMS 2036	<b>PURPLE 07</b>  PMS 2655	<b>PURPLE 06</b>  PMS 2706	

## Important notice

The colours shown in this colour guide should be used as guide only. A surface may appear different due to surface finish (gloss, matte), wall thickness and production method. Monitor colour settings also results in a difference between the actual product and the colour as it appears on your screen. The Pantone number is approach to our colour code.

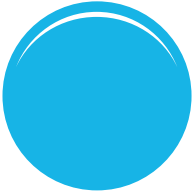


**KORNELIS**  
CAPS & CLOSURES

# STANDARD COLOUR GUIDE

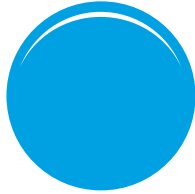
*'Development and production of closures and closing concepts for packaging'*

**BLUE 25**



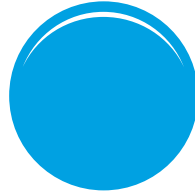
PMS 298

**BLUE 46**



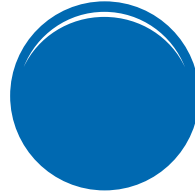
PMS 299 TRANSLUCENT

**BLUE 26**



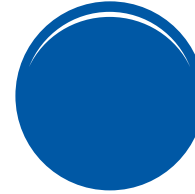
PMS 299

**BLUE 06**



PMS 2196

**BLUE 21**



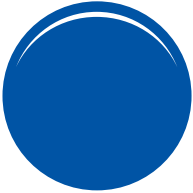
PMS 2133

**BLUE 47**



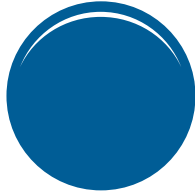
PMS 7710

**BLUE 27**



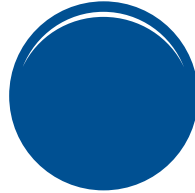
PMS 2945

**BLUE 37**



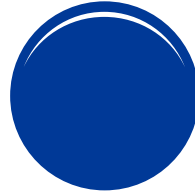
PMS 7462 METALLIC

**BLUE 36**



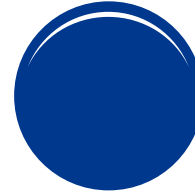
PMS 7686

**BLUE 33**



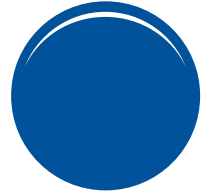
PMS 287

**BLUE 14**



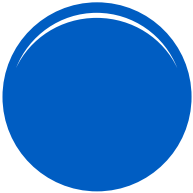
PMS 2146

**BLUE 42**



PMS 301

**BLUE 10**



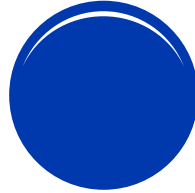
PMS 2935

**BLUE 31**



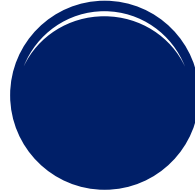
PMS 2726

**BLUE 28**



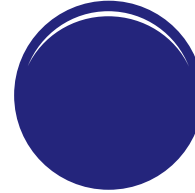
PMS 286

**BLUE 07**



PMS 2758

**BLUE 22**



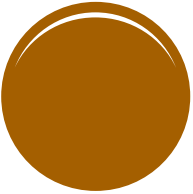
PMS 2105

**BLUE 11**



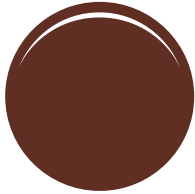
PMS 2766

**BEIGE 07**



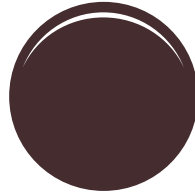
PMS 146

**BROWN 09**



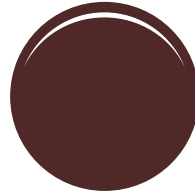
PMS 477

**BROWN 01**



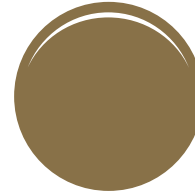
PMS BLACK 5

**BORDEAUX 02**



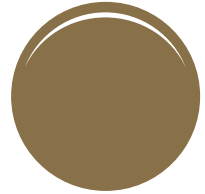
PMS 497

**GOLD 01**



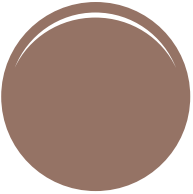
PMS 871

**GOLD DL1614**



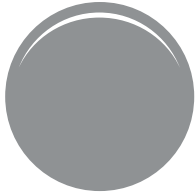
PMS 871

**PEARL 01**



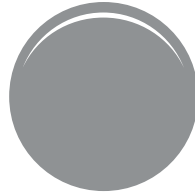
PMS 8021

**SILVER 02**



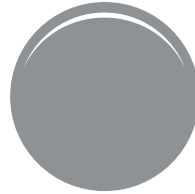
PMS 877

**SILVER DL1615**



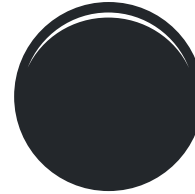
PMS 877

**SILVER DL216**



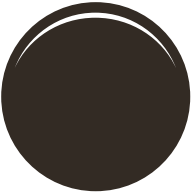
PMS 877

**GRAY 03**



PMS 426

**BLACK 02**



PMS BLACK

## Important notice

The colours shown in this colour guide should be used as guide only. A surface may appear different due to surface finish (gloss, matte), wall thickness and production method. Monitor colour settings also results in a difference between the actual product and the colour as it appears on your screen. The Pantone number is approach to our colour code.

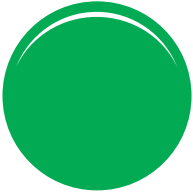


**KORNELIS**  
CAPS & CLOSURES

# STANDARD COLOUR GUIDE

*'Development and production of closures and closing concepts for packaging'*

**GREEN 34**



PMS 2257

**GREEN 13**



PMS 340

**GREEN 01**



PMS 355

**GREEN 26**



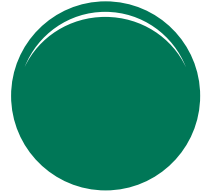
PMS 7726

**GREEN 24**



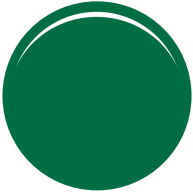
PMS 7726

**GREEN 21**



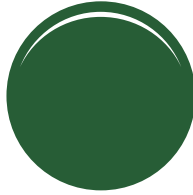
PMS 341

**GREEN 05**



PMS 7733

**GREEN 14**



PMS 7483

**GREEN 15**



PMS 3435

**GREEN 31**



PMS 343

## Important notice

The colours shown in this colour guide should be used as guide only. A surface may appear different due to surface finish (gloss, matte), wall thickness and production method. Monitor colour settings also results in a difference between the actual product and the colour as it appears on your screen. The Pantone number is approach to our colour code.



**KORNELIS**  
CAPS & CLOSURES