

CATALOGUE

DESIGN &
INNOVATION

MANUFACTURING
SERVICES

CUSTOMER
SOLUTIONS



BERLIN PACKAGING UK Ltd.
www.berlinpackaging.co.uk

Food & Beverage
info.uk@berlinpackaging.com

Personal Care
Personalcare.uk@berlinpackaging.co.uk

Beauty
Beauty.uk@berlinpackaging.com

berlin[®]
PACKAGING







CONTENT

Title
PET
HDPE
Glass
Closures
Accessoires
Colours
Flexibles
- Features

Page
5
13
19
24
29
36
38
46

PET





PETPACKER

Our Petpackers are typically used for pharmaceuticals, vitamins and nutritional supplements in softgel, capsules or tablets.

Size (ml)	Overflow (ml)	Neck Finish	Height (mm)	Diameter (mm)	Label Panel (H)	Weight (gr)	Pallet Quantity
55	80	38-400	66	45	37	16	10.336
75 NL	106	38-400	82	45	54	16	8.398
100	124	38-400	87	47	59	16	6.888
120	142	38-400	92	49	63	21	6.096
120 Wide	167	38-400	95	54	63	21	4.620
150	170	38-400	104	50	74	21	5.080
150	179	45-400	85	59	50	28	4.576
175	191	38-400	97	57	64	24	4.356
200	241	38-400	110	59	76	24	3.640
200	259	45-400	115	59	83	28	3.276
225	250	45-400	108	60	70	28	3.420
250	293	45-400	111	64	78	28	3.100
300	368	45-400	119	69	82	37	2.430
400	445	45-400	131	73	91	38	1.952
400	452	53-400	130	73	93	54	1.872
500	531	45-400	135	78	96	37	1.600
500 NL	521	45-400	130	80	88	52	1.536
500	531	53-400	135	78	96	54	1.600
625	618	45-400	156	81	117	52	1.288
625	674	53-400	156	81	106	54	1.288
750	817	53-400	163	88	109	65	888
950	985	53-400	178	92	124	74	888
55	80	38mm J-Cap	66	45	37	17	10.336
75 NL	106	38mm J-Cap	82	45	54	17	8.398
100	124	38mm J-Cap	87	47	59	17	6.888
120	142	38mm J-Cap	92	49	63	20	6.096
120 Wide	167	38mm J-Cap	95	54	63	22	4.620
150	170	38mm J-Cap	104	50	74	22	5.080
150	179	45mm J-Cap	85	59	50	28	3.872
175	191	38mm J-Cap	97	57	64	25	4.356
200	241	38mm J-Cap	110	59	76	25	3.640
200	259	45mm J-Cap	115	59	83	29	3.276
225	250	45mm J-Cap	108	60	70	29	3.420
250	293	45mm J-Cap	111	64	78	29	3.100
300	368	45mm J-Cap	119	69	82	38	2.430
400	445	45mm J-Cap	131	73	91	38	1.952
400	452	53mm J-Cap	130	73	93	54	1.872
500	531	45mm J-Cap	135	78	96	52	1.600
500 NL	521	45mm J-Cap	130	80	88	52	1.536
500	531	53mm J-Cap	135	78	96	54	1.600
625	618	45mm J-Cap	156	81	117	52	1.288
625	674	53mm J-Cap	156	81	106	54	1.288
750	817	53mm J-Cap	163	88	109	65	888
950	985	53mm J-Cap	178	92	124	74	888

Size (ml)	Overflow (ml)	Neck Finish	Height (mm)	Diameter (mm)	Label Panel (H)	Weight (gr)	Pallet Quantity
1.000	1.110	100-400	133	112	66	90	1.632
1.250	1.389	100-400	163	112	96	90	1.344
1.500	1.600	100-400	166	120	90	90	1.162
2.000	2.087	100-400	211	120	135	90	913
2.500	2.670	100-400	216	135	134	101	715
3.000	3.292	120-400	219	147	110	146	540
4.000	4.396	120-400	254	158	135	146	396
6.000	6.363	120-400	283	182	155	240	256
8.000	8.444	120-400	324	195	185	240	210
1.000	1.110	100mm J-Cap	133	112	66	90	1.632
1.250	1.389	100mm J-Cap	163	112	96	90	1.344
1.500	1.600	100mm J-Cap	166	120	90	90	1.162
2.000	2.087	100mm J-Cap	211	120	135	90	913
2.500	2.670	100mm J-Cap	216	135	134	90	715
3.000	3.292	120mm J-Cap	219	147	110	146	540
4.000	4.396	120mm J-Cap	254	158	135	151,6	396
6.000	6.363	120mm J-Cap	283	182	155	240	256
8.000	8.444	120mm J-Cap	324	195	185	240	210



PET LARGE WIDE MOUTH CANISTER

PET Wide Mouth Canisters are typically used in the sports nutrition market. They can contain whey protein, creatine and other powders. The range starts with the 1.000ml bottle for 330g of powder and ranges up to 8.000ml for 2.5kg of powder. (grams and kilograms depending on density of the powder).

Size (ml)	Overflow (ml)	Neck Finish	Height (mm)	Diameter (mm)	Label Panel (H)	Weight (gr)	Pallet Quantity
1 Gallon	3.945	120-400	186	168	112	140	tbd
6.000	6.480	120-400	262	193	171	240	256
2 Gallon	8.162	120-400	280	210	180	240	192
1 Gallon	3.945	120mm J-Cap	186	168	112	140	tbd
6.000	6.480	120mm J-Cap	262	193	171	240	256
2 Gallon	8.162	120mm J-Cap	280	210	180	240	190



PET WIDE BODY CANISTER

The PET Wide Body Canister is wider and lower than the Large Canister. Its wide shoulders give the wide body a sturdy appearance.



PET WIDE MOUTH JAR

Our line of PET Wide Mouth Jars is ideal for personal care products such as bath salts, creams, balms, gels and body scrubs. They are also being used for food products like super foods.

Size (ml)	Overflow (ml)	Neck Finish	Height (mm)	Diameter (mm)	Label Panel (H)	Weight (gr)	Pallet Quantity
50	80	70-400	26	72	8	15	10.080
100	130	70-400	39	72	21	15	5.040
125	159	70-400	44	73	tbd	15	4.320
150	188	70-400	51	73	34	15	3.960
200	230	70-400	64	72	49	15	3.060
250	286	70-400	77	73	60	22	2.520
300	339	70-400	90	72	tbd	20	2.400
400	445	70-400	118	72	98	30	1.620
125	202	89-400	35	93	tbd	25	3.105
200	298	89-400	51	93	tbd	25	2.300
250	288	89-400	48	94	27	40	3.220
350	447	89-400	73	93	tbd	25	tbd
360	403	89-400	67	94	46	40	2.240
500	522	89-400	84	94	62	40	1.820
500	597	89-400	96	93	tbd	41	tbd
600	663	89-400	105	94	84	44	1.900
750	847	89-400	134	93	tbd	41	805
25oz	876	89-400	143	93	111	71	1.680
32oz	1046	89-400	168	93	137	90	1.260
200	300	100-400	42	104	17	31	2.340
200	294	100-400	45	104	tbd	41	tbd
350	444	100-400	60	104	tbd	41	1.344
500	595	100-400	78	104	tbd	41	1.092
750	866	100-400	111	104	tbd	41	756
750	866	100-400	109	104	tbd	68	756
1000	1094	100-400	139	104	tbd	41	588
1000	1094	100-400	139	104	tbd	68	588
1400	1494	100-400	186	104	tbd	68	420



PET TRADITIONAL BOSTON ROUND

The PET Traditional Boston Round line is ideal for liquids and lotions, with several neck finishes to accommodate pumps and sprayers.

Size (ml)	Overflow (ml)	Neck Finish	Height (mm)	Diameter (mm)	Label Panel (H)	Weight (gr)	Pallet Quantity
50	60	20-410	79	37	41	9	6.912
150	164	24-410	110	50	62	16	4.444
150	165	24-415	118	50	68	16	3.636
200	220	24-410	122	54	71	19	tbd
200	220	24-415	130	54	71	19	tbd
250	270	24-410	129	58	75	22	2.288
250	272	24-415	137	58	75	22	2.112
400	tbd	24-410	tbd	tbd	tbd	29	1.440
500	540	24-410	173	70	106	32	1.080
500	542	24-415	180	70	106	33	1.080
500	523	28-410	168	70	114	33	1.188
1.000	1.075	28-410	213	88	145	42	600
1.000	1.040	28-410	220	85	140	39	tbd

Size (ml)	Overflow (ml)	Neck Finish	Height (mm)	Diameter (mm)	Label Panel (H)	Weight (gr)	Pallet Quantity
100	111	20-410	121	38	86	11	5.814
150	163	24-410	147	42	105	18	3.892
200	217	24-410	155	47	108	18	2.940
200	218	24-415	163	47	108	19	2.520
250	267	24-410	170	49	122	21	2.424
250	268	24-415	178	49	122	22	2.424
300	323	24-410	186	52	tbd	26	1.950
300	325	24-415	194	52	tbd	26	1.950
500	520	24-410	209	62	151	32	1.150
500	524	24-415	217	62	151	33	1.150
750	775	28-410	222	72	tbd	37	tbd
1000	1025	28-410	240	80	tbd	37	tbd



PET TALL BOSTON ROUND

PET Tall Boston Rounds, available in several neck finishes, are ideal for hair care and lotions. This sleek family is more narrow than our Boston Rounds, giving your line a taller appearance in a wide range of sizes.

Size (ml)	Overflow (ml)	Neck Finish	Height (mm)	Diameter (mm)	Label Panel (H)	Weight (gr)	Pallet Quantity
500	523	28ROPP	168	70	106	33	1.188
1.000	1.075	28ROPP	213	88	145	52	600



PET DUTCH ROUND

The shape of the Dutch Round in combination with a 28ROPP neck finish is unique within the market. Perfect for liquids which require a tamper evident closure.

Size (ml)	Overflow (ml)	Neck Finish	Height (mm)	Diameter (mm)	Label Panel (H)	Weight (gr)	Pallet Quantity
25	29	18mm special	110	21	80	9	9.000
30	35	18mm special	72	30	42	9	tbd
75	90	24-410	165	29	144	20	tbd



PET CYLINDER

With its exceptionally practical size, the PET Cylinder is the ideal bottle for liquids that need to be consumed in one go. This bottle is mainly used for liquid amino acids. The bottle can also be used for drinks promoting weight loss. The PET Cylinder 25ml and 30ml are closed with a specially developed 18mm Tamper Evident cap.



PET MEPLAT

Our PET Meplat bottle with its authentic appearance is an incredible alternative for the original glass Meplat model. The advantage of PET over glass is of course that PET does not break on your kitchen floor. Moreover, our PET variety can easily be produced in your specific company colour.

Size (ml)	Overflow (ml)	Neck Finish	Height (mm)	Diameter (mm)	Label Panel (H)	Weight (gr)	Pallet Quantity
100	110	25ROPP	130	47	94	16	6.960
200	212	28ROPP	156	56	117	23	3.840



PET VERAL BOTTLE

The shape of our PET Veral Bottle is typical for the pharma industry. The 28ROPP neck finish matches perfect with tamper evident closures. This bottle is also being used in the personal care industry. The 28-410 neck finish fits with closures designed for cosmetic purposes.

Size (ml)	Overflow (ml)	Neck Finish	Height (mm)	Diameter (mm)	Label Panel (H)	Weight (gr)	Pallet Quantity
30	39	28ROPP	61	35	25	10	14.724
50	66	28ROPP	69	43	29	10	8.416
100	123	28ROPP	95	48	48	13	4.774
200	234	28ROPP	116	60	61	21	2.484
250	286	28ROPP	129	62	72	23	1.920
300	329	28ROPP	137	64	78	24	1.840
500	542	28ROPP	153	78	85	33	1.064
1.000	1.044	28ROPP	218	89	141	52	560
30	38	28-410	58	35	25	10	14.724
50	65	28-410	66	43	29	10	8.416
100	122	28-410	92	48	48	12	4.774
200	234	28-410	113	60	61	19	2.484
250	286	28-410	126	62	72	21	1.920
300	314	28-410	134	64	78	24	1.840
500	543	28-410	150	78	85	30	1.064
1.000	1.047	28-410	213	89	141	42	560



PET SYRUP BOTTLE

Our PET Syrup Bottles are often being used in the pharma and personal care industry. Their well styled rounded shoulders give them the typical 'syrup' look.

Size (ml)	Overflow (ml)	Neck Finish	Height (mm)	Diameter (mm)	Label Panel (H)	Weight (gr)	Pallet Quantity
60	70	28ROPP	74	43	20	10	7.890
100	112	28ROPP	98	46	37	13	5.082
125	136	28ROPP	105	48	42	13	4.340
150	171	28ROPP	124	49	tbd	17	3.636
250	264	28ROPP	131	60	55	23	2.208
300	315	28ROPP	140	63	59	25	1.840
500	530	28ROPP	161	76	73	33	1.190
1.000	1.035	28ROPP	220	89	121	52	560
60	68	28-410	71	43	20	10	7.890
100	111	28-410	98	46	37	13	5.082
125	135	28-410	102	48	42	13	4.040
150	171	28-410	121	49	tbd	tbd	3.402
250	264	28-410	128	60	55	18	2.208
300	315	28-410	137	63	59	25	1.840
500	531	28-410	158	76	73	33	1.204
1.000	1.036	28-410	215	89	121	42	560

Size (ml)	Overflow (ml)	Neck Finish	Height (mm)	Diameter (mm)	Label Panel (H)	Weight (gr)	Pallet Quantity
75	90	24-410	165	29	144	20	tbd
100	113	20-410	119	39	95	11	tbd
150	160	24-410	144	41	119	16	tbd
150	tbd	24-410	115	47	tbd	20	tbd
200	tbd	24-410	146	47	tbd	20	tbd
250	263	24-410	158	50	134	22	tbd
250	tbd	24-410	175	47	tbd	22	tbd
300	316	24-410	187	50	157	25	tbd
300 Wide	318	24-410	145	58	tbd	25	2.002
500	514	24-410	182	64	158	32	1.150
500	514	24-415	189	64	158	32	1.150



PET CYLINDER

These PET Cylinders can fit many different kinds of products. For example: shampoo, douche gel or other kinds of lotions.

Size (ml)	Overflow (ml)	Neck Finish	Height (mm)	Diameter (mm)	Label Panel (H)	Weight (gr)	Pallet Quantity
50	65	20-410	93	40	59	8	6.336
75	87	20-410	107	45	72	11	tbd
100	116	20-410	116	49	80	11	tbd



PET FLAT OVAL

The PET Flat Oval can be used for many different products. The Flat Oval come in three different sizes all with the same neck-finish. Perfect for hand soap, body lotion or sunscreen.

Size (ml)	Overflow (ml)	Neck Finish	Height (mm)	Diameter (mm)	Label Panel (H)	Weight (gr)	Pallet Quantity
175	186	38-400	135	48	68	17	3.584
230	262	63-400	89	69	37	21	3.696
330	353	63-400	120	69	67	29	2.640
500	539	63-400	138	79	79	29	1.872
1.000	tbd	63-400	200	89	120	45	900
Rectangle							
300	361	63-400	115	79	67	29	tbd
500	560	63-400	145	59	87	29	tbd
700	763	63-400	159	78	129	93	tbd
1.000	1.105	63-400	179	87	108	44	tbd



PET SPICE JAR

The PET Spice Jar is ideal for spices. The Spice Jars are available in different sizes and with different neck finishes for all your different spices.



PET HONEYCOMB

The PET Honeycomb is perfect for honey or other sirops. As the name says the PET Honeycomb has a honeycomb structure on the outside of the jar.

Size (ml)	Overflow (ml)	Neck Finish	Height (mm)	Diameter (mm)	Label Panel (H)	Weight (gr)	Pallet Quantity
321	330	38-400	126	66	49	20	1.840



PET OCTAGONAL JARS

The PET Octagonal Jars have an octagonal shape and are therefore unique. These jars can be used for many different kinds of products.

Size (ml)	Overflow (ml)	Neck Finish	Height (mm)	Diameter (mm)	Label Panel (H)	Weight (gr)	Pallet Quantity
100	119	43-400 / 43mm RTS	83	44	42	10	8.580
360	425	63-400	121	66	56	29	2.380
400	467	82mm RTS	89	85	36	26	2.002
500	549	82mm RTS	100	85	36	26	1.859
710	803	82mm RTS	138	84	49	32	1.386
1.000	1.032	82mm RTS	173	85	86	43	1.001
2.000	2.140	100-400/ 100mm RTS	186	118	84	86	560
2.500	2.780	100mm RTS	237	116	115	95	400
3.250	3.420	100mm RTS	241	136	103	95	280
5.000	5.200	100-400	276	173	122	135	168



PET PILL JAR

Our PET Pill Jar has a classic European design. The Pill Jar is a suitable packaging solution for vitamins and supplements in pill or tablet form. Because of its straight sides and wide mouth the Pill Jar is a good alternative for the frequently used Petpacker.

Size (ml)	Overflow (ml)	Neck Finish	Height (mm)	Diameter (mm)	Label Panel (H)	Weight (gr)	Pallet Quantity
50	65	40mm Mcap	51	45	29	10	9.702
75	90	40mm Mcap	68	45	58	11	7.392
100	114	40mm Mcap	85	45	63	18	6.006
150	180	40mm Mcap	96	53	67	18	3.696

HDPE & PP





HDPE PHARMA LINE ROUNDPACKER

The Pharma Line of HDPE Roundpackers is an American product line, designed to meet the needs of pharmaceutical and nutritional supplement customers who require pharmaceutical-grade bottles.

Size (ml)	Overflow (ml)	Neck Finish	Height (mm)	Diameter (mm)	Label Panel (H)	Weight (gr)	Pallet Quantity
50	64	33-400	68	39	44	8	17.250
75	85	33-400	76	43	46	10	12.750
100	112	38-400	82	47	55	14	9.600
120	140	38-400	86	51	56	13	7.650
150	164	38-400	95	53	63	17	6.225
175	186	38-400	98	56	63	17	5.625
225	249	45-400	108	60	73	23	4.350
275	290	45-400	114	64	74	25	4.050
300	345	45-400	125	66	83	26	3.060
400	459	45-400	133	74	90	33	3.600
500	567	53-400	141	79	96	38	2.964
625	673	53-400	157	81	103	42	2.616
750	850	53-400	166	88	101	49	2.142
950	1036	53-400	183	95	112	58	1.560



HDPE ROUNDPACKER EU-LINE

For short lead-times we started an European production for popular HDPE Roundpacker sizes. Several EU-Lines are even available from stock and can be ordered by pallet.

Size (ml)	Overflow (ml)	Neck Finish	Height (mm)	Diameter (mm)	Label Panel (H)	Weight (gr)	Pallet Quantity
100	122	38-400	85	48	58	12	5.642
150	165	38-400	96	53	65	15	3.828
180	200	45-400	100	56	67	18	3.240
225	250	45-400	108	60	74	20	2.484
300	342	45-400	125	66	87	25	1.840
400	447	45-400	134	73	88	34	2.000
100	122	38mm J-Cap	85	48	58	12	5.642
150	165	38mm J-Cap	96	53	65	15	3.828
180	200	45mm J-Cap	100	56	67	18	3.240
225	250	45mm J-Cap	108	60	74	20	2.484
300	342	45mm J-Cap	125	66	87	25	1.840
400	447	45mm J-Cap	134	73	88	34	2.000



HDPE STRAIGHT SIDED CANISTER

Our well styled HDPE Straight Sided Canisters are very manageable by the consumer and very easy to get labelled or sleeved. Our European range starts from 46oz up to 100oz. Each size Canister is designed to work with long skirt 120mm closures as well as 120mm closures with visible seal on the outside.

Size (oz)	Overflow (ml)	Neck Finish	Height (mm)	Diameter (mm)	Label Panel (H)	Weight (gr)	Pallet Quantity
46	1.500	120mm	134	124	89	62	560
55	1.700	120mm	151	124	106	64	490
60	1.831	120mm	163	124	118	70	490
70	2.015	120mm	178	124	133	73	tbd
85	2.486	120mm	218	124	173	83	350
100	2.930	120mm	256	124	212	100	350

Size (ml)	Overflow (ml)	Neck Finish	Height (mm)	Diameter (mm)	Label Panel (H)	Weight (gr)	Pallet Quantity
1.700	1.950	120mm	147	142	74	90	tbd
2.500	2.700	100mm	210	136	125	100	330
3.000	3.265	100mm	245	136	160	120	264
4.000	4.285	100mm	264	152	173	150	192
4.000	4.090	120mm	241	159	145	130	441
6.000	6.815	120mm	254	201	136	190	120
7.000	7.260	120mm	303	190	186	250	256
2.1 gallon	8.275	120mm	291	205	199	265	200
Indented							
4.000	4.090	120mm	241	159	145	130	441
7.000	7.260	120mm	303	190	186	250	256
2.1 gallon	8.130	120mm	291	205	191	265	200



HDPE (INDENTED) LARGE ROUNDPACKER

HDPE Roundpackers are typically used in the sports nutrition market. They can contain whey protein, creatine and other powders. These jars are available with label area. With a large opening these jars are ideal to combine with a scoop.

Size (ml)	Overflow (ml)	Neck Finish	Height (mm)	Diameter (mm)	Label Panel (H)	Weight (gr)	Pallet Quantity
250	tbd	89-400	61	94	42	23	3.840
360	tbd	89-400	76	94	57	30	6.648
500	tbd	89-400	87	94	68	37	2.112
575	tbd	89-400	108	94	89	39	1.920
750	tbd	89-400	130	94	111	50	1.344
1000	tbd	89-400	168	94	150	60	800
500	600	100-400	81	104	60	41	1.008
750	850	100-400	111	104	91	50	756
1.000	1.100	100-400	142	104	121	59	1.176
1.250	1.350	100-400	172	104	152	70	504
1.500	1.800	120-400	159	124	127	75	366
2.000	2.300	120-400	202	124	169	85	550
2.500	2.810	120-400	245	124	212	95	440
500	665	100mm bead	89	104	60	41	tbd
750	916	100mm bead	120	104	91	50	672
1.000	1.166	100mm bead	151	104	121	59	1.260
1.250	1.414	100mm bead	181	104	152	70	770
1.500	1.870	120mm bead	166	124	127	75	tbd
2.000	2.380	120mm bead	209	124	169	85	tbd
2.500	2.890	120mm bead	252	124	212	95	tbd



HDPE CYLINDRICAL JAR

The HDPE Cylindrical Jar range. The sizes with 100mm and 120mm neck are available with or without bead. A bead is perfect for using Long Skirt closures to create a full cylindrical effect. The bead can also be used with a normal closure combined with a neck sleeve.

Size (ml)	Overflow (ml)	Neck Finish	Height (mm)	Diameter (mm)	Label Panel (H)	Weight (gr)	Pallet Quantity
600	tbd	89mm	113	99	tbd	40	936
800	tbd	89mm	137	99	tbd	49	832
1.000	tbd	89mm	164	99	125	60	624
1.150	tbd	89mm	185	99	tbd	tbd	tbd
1.250	tbd	89mm	196	99	157	73	tbd
1.500	tbd	89mm	231	99	192	83	tbd



HDPE WIDE MOUTH JAR with TAMPER EVIDENT Neck Finish

The HDPE Wide Mouth Jar with a neck finish that is suitable for a tamper evident cap with tear-off-band. Ideal for products requiring a visible seal.



PP LAGO JAR

With a 89-400 neck finish these jars have a very wide opening making them perfect for products such as bath salts and body scrubs.

Size (ml)	Overflow (ml)	Neck Finish	Height (mm)	Diameter (mm)	Label Panel (H)	Weight (gr)	Pallet Quantity
200	tbd	89-400	47	93	tbd	32	3.072
250	tbd	89-400	5	93	tbd	32	2.688
400	tbd	89-400	80	93	tbd	40	1.920
500	tbd	89-400	tbd	93	tbd	45	1.536



PP LUNA JAR

The PP Luna Jar comes with a 83-400 neck finish. The 100ml and 200ml are available in a normal and in a matte version. These jars are often used for body lotion products.

Size (ml)	Overflow (ml)	Neck Finish	Height (mm)	Diameter (mm)	Label Panel (H)	Weight (gr)	Pallet Quantity
100	tbd	83-400	31	86	tbd	18	5.824
100	tbd	83-400	31	86	tbd	18	5.824
150	tbd	83-400	43	86	tbd	19	5.040
200	tbd	83-400	61	87	tbd	29	3.840
200	tbd	38-400	61	87	tbd	29	3.840
250	tbd	83-400	61	86	tbd	27	3.360
300	tbd	83-400	71	86	tbd	29	2.400



PP TERRA JAR

The PP Terra Jar comes in three sizes with a 75-400 neck finish. The PP Terra Jars are perfectly suitable for multiple personal care solutions.

Size (oz)	Overflow (ml)	Neck Finish	Height (mm)	Diameter (mm)	Label Panel (H)	Weight (gr)	Pallet Quantity
200	tbd	75-400	47	80	tbd	14	4.800
250	tbd	75-400	59	80	tbd	17	4.200
300	tbd	75-400	70	80	tbd	tbd	tbd

Size (ml)	Overflow (ml)	Neck Finish	Height (mm)	Diameter (mm)	Label Panel (H)	Weight (gr)	Pallet Quantity
100	tbd	66-400	39	67	tbd	13	6.400
125	tbd	66-400	47	67	tbd	16	5.600
125	tbd	66-400	tbd	67	tbd	16	5.600
150	tbd	66-400	56	67	tbd	17	4.800



PP ELBA JAR

The PP Elba Jar is a smaller jar perfect for personal care products. The PP Elba Jar is often chosen for hair styling products, but can also be used for other personal care products.

Size (ml)	Overflow (ml)	Neck Finish	Height (mm)	Diameter (mm)	Label Panel (H)	Weight (gr)	Pallet Quantity
50	66	Snap on 43mm	51	45	34	8	17.748
75	90	Snap on 43mm	67	45	51	11	14.355
100	112	Snap on 43mm	83	45	67	14	11.184
100	157	Snap on 60mm	55	67	38	14	7.385
125	133	Snap on 43mm	96	45	79	14	9.786
150	194	Snap on 43mm	83	60	59	17	4.826
150	205	Snap on 60mm	71	67	53	19	5.880
200	237	Snap on 43mm	101	60	77	19	4.826
200	255	Snap on 60mm	85	67	68	21	4.830
250	293	Snap on 60mm	98	67	81	24	4.220
300	348	Snap on 60mm	113	67	96	25	3.570
500	652	Snap on 95mm	94	100	63	44	1.051
750	tbd	Snap on 95mm	124	100	94	55	1.185
1000	tbd	Snap on 95mm	157	100	127	70	948



HDPE BERLINPAC

The HDPE Berlinpac jar comes with a snap on neck in many different sizes. The HDPE Berlinpac range can be used for many different solutions in the food, cosmetics and pharma industries.

Size (ml)	Overflow (ml)	Neck Finish	Height (mm)	Diameter (mm)	Label Panel (H)	Weight (gr)	Pallet Quantity
50	62	Snap on 34mm	52	45	34	11	tbd
75	90	Snap on 34mm	68	45	51	10	tbd
100	105	Snap on 34mm	84	45	67	17	tbd
125	133	Snap on 34mm	96	45	79	14	tbd
150	194	Snap on 42mm	80	60	59	20	tbd
200	237	Snap on 42mm	98	60	77	19	tbd
350		Snap on 42mm					tbd

Snap on mediterranean cap 34mm or 42mm



HDPE MEDIPACKER

The HDPE Medipacker is perfect for the pharma industry. These bottles come with a snap on neck. The closure creates a screw neck with a tamper evident ring.



PP EFFERVESCENT TUBE

The PP Effervescent Tube is used for effervescent tablets. The tubes come in various sizes and in two different diameters. These tubes also have a great label panel for your label.

Size	Neck Finish	Height (mm)	Diameter (mm)	Label Panel (H)	Weight (gr)	Pallet Quantity
58 x 25	Snap on 25mm	58	25	49	6	34.000
85 x 25	Snap on 25mm	85	25	76	9	23.000
143 x 25	Snap on 25mm	143	25	134	14	11.600
53 x 29	Snap on 29mm	53	29	45	5	37.500
63 x 29	Snap on 29mm	63	29	56	7	28.000
76 x 29	Snap on 29mm	76	29	68	8	28.000
87 x 29	Snap on 29mm	87	29	80	9	22.500
99 x 29	Snap on 29mm	99	29	91	11	20.000
131 x 29	Snap on 29mm	131	29	123	14	12.800
158 x 29	Snap on 29mm	158	29	149	17	10.200

Snap on cap with high dessicant and spring available in 25mm or 29mm

Snap on cap with low dessicant and without spring available in 25mm or 29mm

Snap on cap with high dessicant and without spring available in 25mm or 29mm



PP BERLINTAINER

The PP Berlinter is a very extended range with a lot of sizes. They also come in various colours. The Berlinter has a snap on neck. The closure that comes with the Berlinter contains a tamper-evident tear band and also comes in multiple colours.

Size (ml)	Overflow (ml)	Neck Finish	Height (mm)	Diameter (mm)	Label Panel (H)	Weight (gr)	Pallet Quantity
23	tbd	Snap on 22mm	66	22	tbd	6	25.600
50	tbd	Snap on 35mm	52	35	tbd	9	16.000
80	tbd	Snap on 35mm	87	35	tbd	15	9.600
105	tbd	Snap on 49mm	58	49	tbd	15	6.400
135	tbd	Snap on 49mm	75	49	tbd	18	5.600
145	tbd	Snap on 62mm	50	62	tbd	1	5.600
205	tbd	Snap on 62mm	70	62	tbd	19	4.000
265	tbd	Snap on 62mm	90	62	tbd	25	2.880
330	tbd	Snap on 62mm	111	62	tbd	29	2.880
440	tbd	Snap on 75mm	106	75	tbd	40	2.240
535	tbd	Snap on 75mm	125	75	tbd	50	1.680
650	tbd	Snap on 97mm	90	97	tbd	41	1.280
880	tbd	Snap on 97mm	125	97	tbd	77	960
1050	tbd	Snap on 97mm	145	97	tbd	70	800
1200	tbd	Snap on 120mm	110	120	tbd	88	672
1350	tbd	Snap on 97mm	187	97	tbd	93	640
1500	tbd	Snap on 120mm	136	120	tbd	125	672
2000	tbd	Snap on 120mm	182	120	tbd	120	448
2500	tbd	Snap on 130mm	194	130	tbd	188	384
3000	tbd	Snap on 130mm	232	130	tbd	213	288

GLASS





GLASS TABLET BOTTLE

Type III Amber Glass Tablet Bottles are a sustainable solution for packaging nutritional supplements in pill or capsule form.

Size (ml)	Overflow (ml)	Neck Finish	Height (mm)	Diameter (mm)	Label Panel (H)	Weight (gr)	Pallet Quantity
60	69	33-400	76	45	39	73	6.336
60	77	38-400	76	45	53	79	6.000
75	86	38-400	83	45	52	82	5.760
100	114	38-400	88	50	53	92	5.390
120	135	38-400	95	53	56	110	4.620
150	170	45-400	100	56	58	122	3.600
175	197	45-400	107	58	64	138	2.880
200	226	45-400	110	61	66	145	3.240
250	274	45-400	118	65	73	170	2.520
300	334	45-400	128	69	83	205	1.920
300	335	53-400	127	68	88	210	1.920
400	440	53-400	137	75	81	225	1.728
500	550	53-400	147	81	88	270	1.260
625	640	53-400	154	85	98	319	1.008
750	800	53-400	165	92	114	357	720



GLASS SYRUP BOTTLE

Type III Glass Syrup Bottle is a traditional bottle which is often being used in the pharmaceutical market.

Size (ml)	Overflow (ml)	Neck Finish	Height (mm)	Diameter (mm)	Label Panel (H)	Weight (gr)	Pallet Quantity
30	35	28ROPP	67	35	tbd	40	13.200
60	66	28ROPP	95	39	tbd	60	5.910
100	108	28ROPP	105	46	tbd	72	2.592
125	133	28ROPP	114	49	tbd	90	5.184
150	158	28ROPP	123	52	tbd	98	3.780
180	189	28ROPP	130	55	56	105	tbd
200	213	28ROPP	116	58	72	125	2.592
250	260	28ROPP	143	62	60	150	2.268
300	316	28ROPP	153	66	62	170	2.268
500	512	28ROPP	176	76	74	260	2.268



GLASS DROPPER BOTTLE

Type III Amber Glass Dropper Bottles with DIN18 neck finish are perfect for dosing liquids such as etheric oils and pharmaceutical substances. The dropper bottles can also be used in combination with matching items such as pipettes and nasal & ear sprays.

Size (ml)	Overflow (ml)	Neck Finish	Height (mm)	Diameter (mm)	Label Panel (H)	Weight (gr)	Pallet Quantity
Amber							
5	7	DIN 18	50	22	24	22	45.900
10	13	DIN 18	58	25	34	28	30.720
15	20	DIN 18	65	29	38	35	21.840
20	23	DIN 18	72	29	44	35	20.280
25	27	DIN 18	78	30	46	41	12.960
30	35	DIN 18	79	33	50	48	13.200
50	57	DIN 18	92	37	61	55	8.800
100	105	DIN 18	112	45	77	88	4.480
Cobalt Blue / Dark Green							
5	7	DIN 18	50	22	24	22	45.900
10	13	DIN 18	58	25	34	28	30.720
15	20	DIN 18	65	29	38	35	21.840
20	23	DIN 18	72	29	44	35	20.280
30	35	DIN 18	79	33	50	48	13.200
50	57	DIN 18	92	37	61	55	8.800
100	105	DIN 18	112	45	77	88	4.480

Size (ml)	Overflow (ml)	Neck Finish	Height (mm)	Diameter (mm)	Label Panel (H)	Weight (gr)	Pallet Quantity
50	55	GL22	104	44	63	82	5.760
100	108	GL22	137	53	86	138	3.024
150	158	GL22	151	60	95	181	2.400
150	158	25ROPP	151	60	95	181	2.400
250	tbd	GL22	183	69	tbd	260	1.440
250	260	25ROPP	189	69	106	255	1.440
250	265	28ROPP	183	69	116	245	2.304
500	524	28ROPP	217	89	139	520	1.176
1000	1021	28ROPP	264	109	171	690	720



GLASS MEPLAT BOTTLE

Type III Glass Meplat Bottle with its authentic appearance is often being used for pharmaceutical liquids, such as cough syrups.

Size (ml)	Overflow (ml)	Neck Finish	Height (mm)	Diameter (mm)	Label Panel (H)	Weight (gr)	Pallet Quantity
60	73	28ROPP	82	44	38	63	9.600
100	110	28ROPP	96	51	48	88	3.360
150	168	28ROPP	110	57	53	122	2.592
200	220	28ROPP	118	63	59	130	3.528
250	281	28ROPP	136	65	69	160	1.638
300	330	28ROPP	134	72	66	200	2.340
500	555	28ROPP	161	83	83	266	1.200
1.000	1.090	28ROPP	205	100	115	485	336



GLASS VERAL BOTTLE

The shape of our Glass Veral Bottle is typical for the pharma industry. The 28ROPP neck finish matches perfect with tamper evident closures. This is the most traditional shape used in the pharmaceutical industry.

Size (ml)	Overflow (ml)	Neck Finish	Height (mm)	Diameter (mm)	Label Panel (H)	Weight (gr)	Pallet Quantity
20	27	snap on 27 mm	48	35	32	35	9.180
30	42	snap on 34 mm	47	42	42	43	9.180
50	60	snap on 34 mm	63	42	43	50	8.160
60	75	snap on 34 mm	71	42	50	65	6.720
75	85	snap on 34 mm	86	42	66	67	5.160
100	110	snap on 42 mm	68	54	44	73	4.368
110	120	snap on 42 mm	74	54	50	80	4.056
125	144	snap on 42 mm	86	54	61	88	3.432
175	185	snap on 42 mm	110	54	85	114	2.340
200	220	snap on 42 mm	95	64	62	140	2.340
300	320	snap on 42 mm	132	64	100	185	1.638

Snap on pharma cap with pull ring 34mm or 42mm



GLASS PHARMA JAR

The Glass Pharma Jar is a great and sustainable solution for pharmaceuticals which require a tamper evident cap. The jars require a Pharma Cap with Pull Ring or Mediturn Cap.



GLASS BOSTON BOTTLE

The type III Glass Boston Bottle brings you back to basic. This traditional bottle is perfect for cosmetic purposes and pharmaceutical liquids such as syrups.

Size (ml)	Overflow (ml)	Neck Finish	Height (mm)	Diameter (mm)	Label Panel (H)	Weight (gr)	Pallet Quantity
14	16	18-400	68	25	33	26	25.350
31	36	20-400	79	33	42	44	13.200
61	64	20-400	94	39	46	58	7.920
120	126	22-400	113	49	60	108	4.374
235	250	28-400	138	60	46	175	2.268
480	505	28-400	169	75	99	255	1.296



GLASS CYLINDRIC TABLET BOTTLE J-CAP

Type III Straight Tablet Bottles with J-Cap neck finish are the traditional packaging solution for vitamins and nutritional supplements in pill or tablet form. This line requires J-Cap GCA closures.

Size (ml)	Overflow (ml)	Neck Finish	Height (mm)	Diameter (mm)	Label Panel (H)	Weight (gr)	Pallet Quantity
60	75	38x16 J-Cap GCA	70	46	38	65	8.294
100	113	38x16 J-Cap GCA	78	54	38	63	5.082
125	139	38x16 J-Cap GCA	85	58	40	100	4.510
200	222	43x16 J-Cap GCA	102	64	53	125	2.997
300	331	43x16 J-Cap GCA	117	73	63	172	2.056



GLASS CREAM JAR

The Glass Cream Jar is highly suitable for almost every cream.

Size (ml)	Overflow (ml)	Neck Finish	Height (mm)	Diameter (mm)	Label Panel (H)	Weight (gr)	Pallet Quantity
30	37	38-400	48	41	tbd	46	10.560
50	59	58-400	43	61	tbd	130	7.128
60	73	51-400	60	52	tbd	87	7.920
130	tbd	58-400	65	61	tbd	118	4.860

Size (ml)	Overflow (ml)	Neck Finish	Height (mm)	Diameter (mm)	Label Panel (H)	Weight (gr)	Pallet Quantity
30	31	TO43	38	44	tbd	50	tbd
50	53	TO43	51	45	26	46	9.880



GLASS FOOD JAR

The Glass Food Jar is highly suitable for products such as mustard, jam and honey. Sealed with a twist-off closure, this is a successful jar for foods requiring pasteurisation or sterilisation.

Size (ml)	Overflow (ml)	Neck Finish	Height (mm)	Diameter (mm)	Label Panel (H)	Weight (gr)	Pallet Quantity
30	40	GL32	68	36	33	50	9.828
50	64	GL32	75	44	42	65	6.120
50	66	GL40	70	44	44	73	5.880
100	115	GL40	93	50	55	100	3.780
100	105	GL45	86	49	57	102	3.402
125	139	GL40	95	54	55	108	3.200
150	170	GL45	104	57	48	130	2.592
200	230	GL55	109	63	61	185	1.890
250	280	GL55	113	69	70	200	1.344
500	565	GL55	154	84	80	335	720
1000	1080	GL68	181	104	118	560	360
50	65	ALCAP 43	67	44	37	72	7.000
75	88	ALCAP 43	76	49	36	85	4.356
100	114	ALCAP 43	89	50	45	98	3.780
125	139	ALCAP 43	95	54	45	108	3.024
250	269	ALCAP 57	106	69	61	196	1.512
200	230	ALCAP 57	109	63	70	230	tbd
300	324	ALCAP 57	120	70	77	230	1.344
500	560	ALCAP 57	147	84	80	315	600



GLASS WIDE MOUTH JAR

The Glass Wide Mouth Jar is a very extensive range. The range comes in different colours and with different neck finishes. Therefore this range can be used perfectly for ranges with several products.

White Flint

30	40	GL32	68	36	33	50	9.828
50	66	GL40	70	44	44	73	5.880
100	115	GL40	93	50	55	100	4.158
100	105	GL45	86	49	57	102	4.752
125	139	GL40	95	54	55	108	3.200
150	170	GL45	104	57	48	130	2.268
200	230	GL55	109	63	61	185	1.890
250	280	GL55	113	69	70	200	1.344
500	565	GL55	154	84	80	335	720
1000	1080	GL68	181	104	118	560	360

CLOSURES



Size	Height (mm)	Diameter (mm)	Weight (gr)	Box Quantity	Pallet Quantity
20-410	12	22	1	7.000	210.000
24-410	12	26	1	5.000	150.000
28-410	13	30	2	3.700	111.000
38-400	10	40	2	3.500	87.500
45-400	11	47	3	2.200	55.000
51-400	11	53	4	1.900	47.500
53-400	11	55	4	1.600	40.000
58-400	11	60	5	1.600	40.000
70-400	11	72	7	765	22.950
83-400	12	85	7	450	13.500
89-400	12	91	11	336	10.080
100-400	15	102	14	240	7.200



ALUMINIUM CLOSURES

The advantage of Aluminium Closures compared to Metal Closures is that Aluminium Closures don't rust. Therefore packaging with these closures are ideal to be used in humid areas such as the bathroom. The standard liner for this closure is the EPE Foam Liner.

Size	Height (mm)	Diameter (mm)	Weight (gr)	Box Quantity	Pallet Quantity
33-400	11	35	6	3.000	81.000
38-400	11	41	6	2.300	62.100
45-400	11	47	8	2.300	55.200
48-400	11	50	8	2.100	50.400
53-400	11	56	10	1.800	43.200
58-400	11	60	10	1.800	43.200
63-400	11	65	11	1.372	24.696
70-400	11	72	14	870	15.660
89-400	13	93	24	650	11.700



UNISHELLS

The Unishell is a unique closure in our metal range. The screw thread is inside the closure and can't be seen from the outside. This means the closure has a very smooth look. It is also possible to create an embossing or debossing of your brand on the closure.

Size	Height (mm)	Diameter (mm)	Weight (gr)	Box Quantity	Pallet Quantity
38-400	11	41	2	2.600	65.000
45-400	11	48	2	2.000	50.000
48-400	11	51	2	2.200	55.000
51-400	11	53	3	1.900	47.500
53-400	11	56	3	1.600	40.000
58-400	11	60	4	1.600	40.000
63-400	11	65	5	1.000	25.000
70-400	11	72	7	900	27.000
83-400	12	86	7	450	13.500
89-400	14	93	8	400	12.000
100-400	15	104	12	350	8.750
120-400	16	129	14	325	5.850



METAL CLOSURES

Metal Closures created from tinfoil are available in different sizes. The Metal Closures can be embossed or debossed with your brand. Metal Closures give a great industrial look to your packaging.



LONG SKIRT CLOSURES

Long Skirt Closures and our PET Canisters with CT neck finish are the perfect match. The caps contain a heat seal liner and are in stock in a number of standard colours. It is possible to place your own logo on the caps for extra brand recognition.

Size	Height (mm)	Diameter (mm)	Weight (gr)	Box Quantity	Pallet Quantity
100mm	26	104	20	207	6.000
120mm	26	125	30	300	4.140



CT SCREW CLOSURES

Our regular CT Screw Closures come in many different sizes and colours. Almost every option is possible.

Size	Height (mm)	Diameter (mm)	Weight (gr)	Box Quantity	Pallet Quantity
28-400	12	30	2	5.000	175.000
33-400	12	35	2	4.000	140.000
38-400	12	40	3	2.900	69.600
43-400	12	45	3	2.200	77.000
45-400	12	47	4	2.000	48.000
48-400	12	50	4	1.700	59.500
53-400	12	56	5	1.300	45.400
58-400	12	60	6	1.100	38.500
63-400	12	66	7	900	37.800
70-400	12	73	9	1.100	27.500
89-400	15	93	13	575	14.375
100-400	17	104	21	460	11.500
120-400	19	124	28	263	6.575



HINGEGARDCAPS

Jars with J-Cap neck finish can be combined with our Hingegardcaps. These caps are ideal for powder-form products requiring a visible tamper evident seal. The caps come with a heat seal liner and are available off the shelf in a number of standard colours.

Size	Height (mm)	Diameter (mm)	Weight (gr)	Box Quantity	Pallet Quantity
33mm	15	33	3	2.500	100.000
38mm	15	38	3	1.800	80.000
45mm	15	45	4	1.400	52.000
53mm	14	53	5	1.000	40.000
100mm	21	100	23	300	7.200
120mm	21	124	41	192	4.608

Size	Height (mm)	Diameter (mm)	Weight (gr)	Box Quantity	Pallet Quantity
DIN18	23	24	3	4.000	80.000
20-400	15	26	3	4.900	171.500
24-400	17	31	5	3.200	112.000
28-400	17	35	5	2.500	75.000
28ROPP	26	35	6	950	38.000
33-400	17	39	6	2.000	70.000
38-400	17	44	7	1.500	52.500
45-400	16	50	4	tbd	tbd
53-400	16	59	7	tbd	tbd
70-400	17	77	19	400	12.000
89-400	20	97	32	225	6.750



CHILD RESISTANT CLOSURES

Child-resistant closure or CRC is special packaging used to reduce the risk of children ingesting hazardous materials. Our CRC's are available with text or in pictorial in many different colours.



CUSTOMIZE YOUR CLOSURE

We are able to customize your closure to your needs. We can offer many possibilities such as: printed logo on your closure and embossed or debossed logo. Almost any cap can be customized to fit your needs.



HANDLE CAPS

Sizes from 100mm and 120mm
Various liners possible



SNAP ON CLOSURE

Snap on sizes from 22mm up to 130mm for Securitainers



MEDITURN CAP

Snap on sizes 34mm and 42mm



ALCAP CLOSURES

Sizes 40mm



PANO CLOSURES

Sizes from 89mm up to 120mm



TAMPER EVIDENT ROPP

25ROPP
28ROPP



TAMPER EVIDENT ROPP with POURER

28ROPP



TWIST OFF CAPS

Sizes from 38mm up to 110mm
Metal and plastic



DIN18 CLOSURES

Various models possible
DIN18



NUTRAGEN II

Sizes from 33mm up to 53mm



NUTRA FLAPPER

Sizes from 33mm up to 110mm



FLAPPER CAPS

Sizes from 38 up to 120mm



PHARMA CAP with PULL RING

Snap on sizes 27mm, 34mm and 42mm

ACCESSORIES





STACKABLE MEASURING SCOOPS

We have developed a range of stackable measuring scoops. The conical shape allows for space-saving transport and storage. Moreover, the scoops come with size designation, making them suitable for dosage control. It is possible to place your logo on the handle for extra brand recognition.

Size (ml)	Height (mm)	Diameter (mm)	Weight (gr)	Length (mm)	Box Quantity	Pallet Quantity
0,5	9	13	0,34	51	15.000	540.000
5	18	26	1,3	65	3.500	126.000
10	22	31	1,8	70	7.221	288.840
15	24	36	2,2	75	2.100	105.000
20	27	39	2,6	80	4.872	194.880
25	29	42	3	85	4.524	180.960
30	32	42	5	93	1.900	95.000
50	37	49	6,5	100	2.150	72.250
70	43	55	8	105	1.950	68.250
90	46	61	9,3	113	1.680	58.800



EXTRA SMALL SCOOPS

Whether it is a pharmacy, chemistry or a forensic laboratory, we have the size required for small ingredient dosing. The scoops have a 9mm or 18mm diameter and come in two handle sizes.

Size (ml)	Height (mm)	Diameter (mm)	Weight (gr)	Length (mm)	Box Quantity	Pallet Quantity
0,15	1	9	0,8	76	5.000	180.000
0,625	4	18	1	76	5.000	180.000
0,625	4	18	1,5	114	3.500	126.000
1	6	18	1,1	76	5.000	180.000
1	6	18	1,5	114	3.000	108.000
1,25	8	18	1,2	76	4.400	158.400
1,25	8	18	1,7	114	2.750	99.000
1,7	10	18	1,1	76	3.500	126.000
1,7	10	18	1,6	114	2.400	86.400
2,5	14	18	1,4	76	2.900	104.400
2,5	14	18	1,8	114	2.000	72.000



SMALL SCOOPS

Our small scoops have a 25mm diameter bowl and come in three handle lengths. In the pharmaceutical industry, most times it is a dash of an ingredient or fraction of materials to be added, to become a game changer in the market.

Size (ml)	Height (mm)	Diameter (mm)	Weight (gr)	Length (mm)	Box Quantity	Pallet Quantity
4	11	25	1,7	76	5.000	150.000
4	11	25	2,4	114	3.500	105.000
4	11	25	2,8	140	2.500	75.000
5	13	25	1,9	76	4.000	120.000
5	13	25	2,6	114	3.000	90.000
5	13	25	3	140	2.200	66.000
6,5	17	25	1,9	76	3.500	105.000
6,5	17	25	2,2	114	2.600	78.000
6,5	17	25	2,8	140	2.000	60.000
7,5	20	25	2,3	76	3.000	90.000
7,5	20	25	2,9	114	2.200	66.000
7,5	20	25	3,4	140	1.800	54.000
9	24	25	2,5	76	2.700	81.000
9	24	25	3,2	114	2.100	63.000
9	24	25	3,6	140	1.500	45.000

Size (ml)	Height (mm)	Diameter (mm)	Weight (gr)	Length (mm)	Box Quantity	Pallet Quantity
11	14	36	2,6	76	2.500	75.000
11	14	36	3,3	114	1.800	54.000
13	17	36	3	76	2.200	66.000
13	17	36	tbd	114	1.700	51.000
14,8	19	36	2,9	76	1.900	57.000
14,8	19	36	3,7	114	1.500	45.000
18	23	36	3,4	76	1.700	51.000
18	23	36	4,1	114	1.200	36.000



MEDIUM SCOOPS

Our medium scoops have a 36mm diameter bowl and come in two handle lengths. These scoops are perfect for preparing a powdered drink mix or a brew of specialty coffee. These scoops will assure you your product flavor will taste the way it was intended to.

Size (ml)	Height (mm)	Diameter (mm)	Weight (gr)	Length (mm)	Box Quantity	Pallet Quantity
20	19	41	3,4	76	1.500	45.000
20	19	41	3,6	84	1.300	39.000
20	19	41	4,2	114	1.100	33.000
23	21	41	3,7	76	1.500	45.000
23	21	41	3,9	84	1.400	42.000
23	21	41	4,4	114	1.300	39.000
25	23	41	3,8	76	1.300	39.000
25	23	41	3,9	84	1.200	36.000
25	23	41	4,5	114	1.000	30.000
26,5	25	41	tbd	76	1.300	39.000
26,5	25	41	tbd	84	1.200	36.000
26,5	25	41	tbd	114	1.100	33.000
29,6	27	41	4,3	76	1.100	33.000
29,6	27	41	4,7	84	1.000	30.000
29,6	27	41	4,9	114	900	27.000
32	30	41	4,7	76	1000	30.000
32	30	41	4,8	84	950	28.500
32	30	41	5,2	114	800	24.000
35	33	41	5,1	76	1000	30.000
35	33	41	5,0	84	950	28.500
35	33	41	5,6	114	850	25.500



LARGE SCOOPS

Our large scoops are serving an important role in healthy lifestyles. Such as measuring nutritional supplements and making it convenient for the user who is usually on-the go. These large scoops provide accuracy for measuring mixes that help to enhance exercise and fitness regimes.



EXTRA LARGE SCOOPS

These extra large scoops are manufactured for major brands of protein powders and meal replacement supplement mixes. The unique design allows these products to help people reach their full weight training potential.

Size (ml)	Height (mm)	Diameter (mm)	Weight (gr)	Length (mm)	Box Quantity	Pallet Quantity
39	27	46	5,4	86	800	24.000
39	27	46	5,8	114	700	21.000
43	30	46	5,6	86	750	22.500
43	30	46	6,2	114	700	21.000
43	30	46	tbd	139	tbd	tbd
48	33	46	6	86	700	21.000
48	33	46	6	114	600	18.000
48	33	46	tbd	139	tbd	tbd
50	35	46	6,4	114	700	21.000
50	35	46	6,9	114	600	18.000
50	35	46	tbd	139	tbd	tbd
53	37	46	6,4	86	600	18.000
53	37	46	6,9	114	500	15.000
53	37	46	tbd	139	tbd	tbd
55	38	46	6,6	86	600	18.000
55	38	46	7,2	114	550	16.500
55	38	46	tbd	139	tbd	tbd
60	41	46	7,2	86	500	15.000
60	41	46	7,7	114	400	12.000
60	41	46	tbd	139	tbd	tbd
63	44	46	7,1	86	500	15.000
63	44	46	7,7	114	450	13.500
63	44	46	tbd	139	tbd	tbd
67	46	46	7,7	86	500	15.000
67	46	46	8,2	114	450	13.500
67	46	46	tbd	139	450	13.500
70	49	46	8,6	86	450	13.500
70	49	46	8	114	400	12.000
70	49	46	tbd	139	400	12.000
73	51	46	8	86	450	13.500
73	51	46	8,5	114	450	13.500
73	51	46	tbd	139	tbd	tbd
75	52	46	tbd	86	450	13.500
75	52	46	tbd	114	450	13.500
75	52	46	tbd	139	tbd	tbd
77	53	46	8,5	86	400	12.000
77	53	46	9,1	114	400	12.000
77	56	46	tbd	139	400	12.000
80	55	46	8,9	86	400	12.000
80	55	46	9,6	114	350	10.500
80	55	46	tbd	139	300	9.000

Size (ml)	Height (mm)	Diameter (mm)	Weight (gr)	Length (mm)	Box Quantity	Pallet Quantity
90	40	57	9,8	89	400	12.000
90	40	57	10,7	127	350	10.500
94	42	57	9,6	89	375	11.250
94	42	57	10,3	127	325	9.750
118,4	53	57	12,3	89	300	9.000
118,4	53	57	13,0	127	250	7.500
148	66	57	13,8	89	225	6.750
148	66	57	14,4	127	200	6.000



XXL SCOOPS

XXL Scoops that are used in measuring supplements or nutritional for pets, and for use in veterinarian and the farming industry. These scoops are being used to measure feed additives and supplements for weight gain and nutrition for animals.

Size (ml)	Height (mm)	Diameter (mm)	Weight (gr)	Length (mm)	Box Quantity	Pallet Quantity
10	22	29	2,5	71	3.000	90.000
10	22	29	3,2	86	2.700	81.000
10	22	29	4	127	tbd	tbd
12	26	29	2,8	71	1.700	51.000
12	26	29	3,5	86	2.600	78.000
12	26	29	4,3	127	2.200	66.000
16	35	29	3,4	71	tbd	tbd
16	35	29	4,1	86	1.600	48.000
16	35	29	5	127	2.100	63.000
16,8	36	29	tbd	71	1.650	49.500
16,8	36	29	4,3	86	tbd	tbd
16,8	36	29	5,1	102	1.200	36.000
20	44	29	tbd	71	tbd	tbd
20	44	29	tbd	86	tbd	tbd
20	44	29	tbd	102	tbd	tbd



ROUND BOTTOM SCOOPS

Round Bottom Scoops are available with vented and non-vented bowls. These scoops are perfect when scoops are used in various ways. For example, powdered milk require rounder, vented scoops due to the fine density of the product that nourishes a baby.

Size (ml)	Height (mm)	Diameter (mm)	Weight (gr)	Length (mm)	Box Quantity	Pallet Quantity
4 oz. Round	76	53	tbd	78	1.225	29.400
4 oz. Rectangle	59	57	12,2	111	1.200	28.800
8 oz. Rectangle	75	57	23,6	121	450	10.800
16 oz. Rectangle	119	57	54,5	151	300	7.200



GRADUATED CUPS

Graduated Cups are used in measuring supplements or nutritional in the veterinarian industry. In the farming industry, these cups are being used to measure feed additives and supplements for weight gain or nutrition for animals.



Size (ml)	Height (mm)	Diameter (mm)	Weight (gr)	Length (mm)	Box Quantity	Pallet Quantity
2,5	11	22	3	131	6.500	364.000
5	14	27	3	134	4.000	224.000
10	19	32	4	136	2.500	140.000
15	19	38	5	139	1.500	84.000
20	23	40	5	140	1.000	56.000

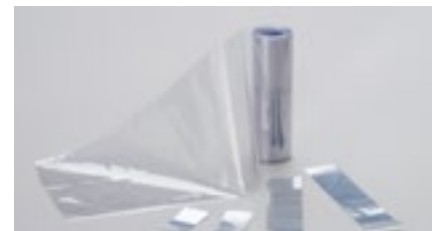
LONG HANDLE SCOOPS CE

A range of long handle scoops with an optional branding area for your logo or company name. These scoops are CE marked and therefore have been assessed to meet high safety, health, and environmental protection requirements.



DIN18 PIPETTES

Standard screw closure or tamper evident. Many different possibilities.



SLEEVES

Sizes from 33mm up to 120mm.



PUMPS AND SPRAYERS

Sizes 24-410, 24-415, 28-410. Wide range of specifications.



DESICCANT BAGS

Various possibilities.

Our aluminium screw cap canisters are fully reusable and recyclable, fitting in perfectly with today's environmentally aware consumer trends.

- With or without an inward curl
- With lined or unlined caps
- Printed 1-4 colours
- Caps embossed

Body mm	20	23	27	30	33	37	40	46	50	53	63	75	97
Diameter	20,0	23,0	27,0	30,0	33,0	37,0	40,0	46,8	50,0	53,5	63,3	75,3	97,35
Max Length	120,0	120,0	120,0	120,0	120,0	120,0	120,0	120,0	150,0	150,0	150,0	150,0	200,0
Min Length	40,0	40,0	40,0	40,0	40,0	40,0	40,0	46,0	50,0	50,0	50,0	50,0	60,0
Max Diameter (Over Bead)	21,9	24,9	28,9	31,9	34,9	38,9	41,9	47,7	51,9	55,4	65,2	77,2	99,5
Cap (mm)	20	23	27	30	33	37	40	46	50	53	63	75	97
Diameter	22,0	25,1	29,1	32,1	35,1	39,2	42,2	48,1	52,3	55,7	65,7	77,7	100,9
Max diameter	23,4	26,5	30,5	33,5	36,8	41,5	44,5	50,1	54,3	57,7	67,4	80,3	103,5
Height	8,9	10,7	10,7	10,7	10,9	12,5	12,5	12,5	12,5	12,7	12,7	12,7	15,1
Thread (mm)	20	23	27	30	33	37	40	46	50	53	63	75	97
Threads per cm	4,8	4,0	4,0	4,0	4,0	3,2	3,2	3,2	3,2	3,2	3,2	3,2	1,9





Clear



Pandora White



White Opaque



Bright White



Pearl White



Satin White



Matte Silver



Light Antracite



Antracite



Light Amber



Dark Amber



Black



Matte Black



Dark Green



Lemon Green



Spring Green



Green Opaque



Green Metallic



Blue Lagoon



Cobalt Blue



Blue Metallic



Pink



Dark Purple



Red Metallic



Apple Cider Red
Metallic



Burgundy



Red



Sunkist Orange



Orange UV



Tangerine



Orange Metallic



Gold Opaque



Fluoristic Yellow



New Yellow



Yellow Opaque

All colours are possible upon request. Contact us for more information about our colours.



White



PMS128C



PMS102c



PMS130c



PMS123C



Orange



PMS1595c



PMS144c



PMS199c



PMS8863c



PMS200c



PMS201C



PMS032C



Pink



PMS225c



PMS2592c



PMS268



PMS2592U



Lavendel



PMS5415c



PMS319



PMS299



Blue Hexachrome



PMS287C



PMS2370



PMS274C



Lemon



PMS2992u



Lightgreen



PMS362



PMS356c



Green



PMS3272c



PMS350C



Black



TN01 Tan / Beige



BR01 Brown



PMS7816



Gold



Gold 24129



Silver



Metallized

*Please note that Pantone numbers are for reference only. They might differ slightly from the exact PMS colours.

FLEXIBLES



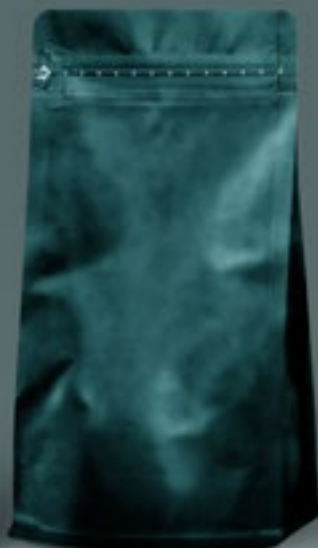
STAND UP POUCH

- Great shelf display abilities
- Take up less space
- Are easier to dispose of than bulky cartons
- Offer a great shelf-time for the product



FLATBOTTOM

- 5 panels for greater marketing possibilities
- A completely flat base for excellent shelf stability
- Large internal capacity



QUAD SEAL

- All four corners of the pouch sealed, which reinforces the structure of this flexible packaging
- Holds its shape well on the shelf and can support heavier fills of product
- 4 distinct sides for printing



SPOUTED POUCH

- Easy dispensing
- Easier and more economic transportation than bottles
- Overall product protection because of the high barrier lamination



SHAPED POUCH

Along with impressive printed graphics you can add another creative element to your flexible packaging, branding strategy with fun, functional and eye-catching shaped pouches.



3 SIDE SEAL / FIN SEAL

A convenient packaging solution for single serve applications ranging from nutritional supplements to instant soups. Including a pre-applied zipper can expand this packaging to support the versatility of multi-use pouch.



ROLL STOCK FILM

Create your own flexible packaging solution with our roll stock film. Our roll stock films work with most form fill and seal machines.



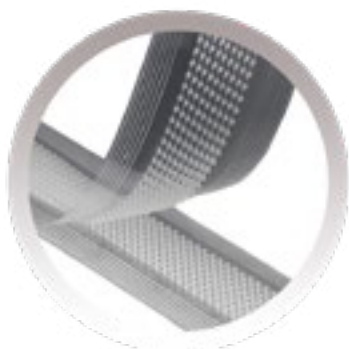
Special features



Normal zipper
Convenient and user friendly.



Pocket zipper
Easy filling and easy-open.



Aplix/Velcro Zipper
Hook-to-hook closure, convenient opening and closing.



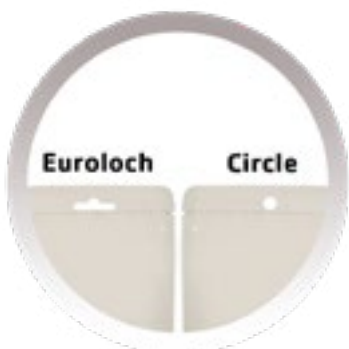
Top Slider Zipper
Convenient opening and closing.



Die-Cut Handle
For easy carrying.



Molded Handle
Sturdy, comfortable handle.



Hang Hole
Enables a hanging point for merchandising.



Tear Notch
Easy tear open.



DEGASSING VALVE

Release CO2 out the bags, while maintaining the freshness of the product.



TRANSPARENT WINDOW

Give customers a sneak peak of what's inside.



SPECIAL STRUCTURES

Kraft, Recyclable, Microwavable, Ovenable etc.



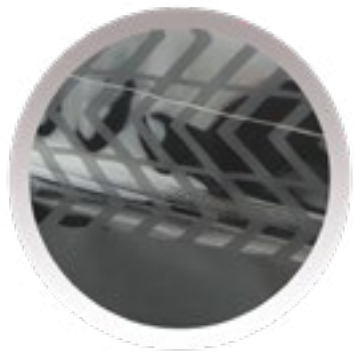
SPECIAL SPOUT CLOSURES

Fitments & Closures to prevents spills, Wine taps, etc.



CHILD RESISTANT CLOSURES

Reduce the risk of children ingesting potentially harmful or hazardous products.



SPOT MATT VARNISH

A smooth look to heighten the impact of particular elements.

SELF-VENTING

Automatic vapor release of the pouch.

LASER SCORING

Allow for clean and easy tears.

MICRO PERFORATION

Allowing trapped air to be released, while maintaining the freshness of the product.

RECLOSABLE/PERMANENT ADHESIVE TAPE

Sealing tape closure.

SPECIAL STRUCTURES

Kraft, Recyclable, Microwavable, Ovenable, Clear high barrier, anti-skid coatings, PP woven etc.

BERLIN PACKAGING UK Ltd.
www.berlinpackaging.co.uk

Food & Bevarage
info.uk@berlinpackaging.com

Personal Care
Personalcare.uk@berlinpackaging.co.uk

Beauty
Beauty.uk@berlinpackaging.com

