

# Graphics Guide for Digitally Printed Tubes

**Digital 360**



## Decoration guideline

<b>General</b>	Prepare the file for digital printing. Avoid using artwork that was prepared for other printing technologies.
<b>Image resolution</b>	300 dpi minimum (preferred 600 dpi)
<b>File format</b>	PDF/X4, exported as high quality print document
<b>File mode</b>	CMYK
<b>Graphics</b>	If images are linked, include source raster files in the highest possible quality.
<b>Bleed</b>	None
<b>Fonts</b>	Text elements must be embedded in the PDF/X4 format
<b>Layers</b>	Please use the layers as defined in the artwork templates <ul style="list-style-type: none"><li>• linework layer</li><li>• Image layer</li></ul>
<b>Barcode</b>	Down to 90%, Class C verified (Black code on white pad with 1 mm bleed) Neopac cannot be held responsible for barcodes that do not conform to ISO/IEC15416 Standards.
<b>QR code</b>	<ul style="list-style-type: none"><li>• Min. size 10x10 mm (0.4 inch x 0.4 inch).</li><li>• White space around should be at least 1 mm.</li></ul>
<b>Special characters</b>	®, ™, @, #, *, %, & und flags etc, need to be in 6pt as well
<b>Black color</b>	<ul style="list-style-type: none"><li>• K-100, C-0, M-0, Y-0</li><li>• No overprint</li></ul>
<b>Pantone colors</b>	Standard Pantone + Solid Coated color book naming convention
<b>Text</b>	Vertical alignment: center

## Additional information to the Artwork layouts

### Tubes with cap printing

Extend the tube design to include the fliptop cap or the screw cap and increase your decoration area.

### Full printing to tube end

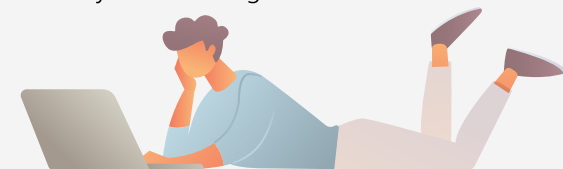
We recommend to leave the top end free from printing (except for the eye mark) for the most esthetic and clean end sealing result.

### 360° all-around printing

Our DigitAll360° allows seamless decoration. Leverage your tube appearance with continuous designs with no start or an end.

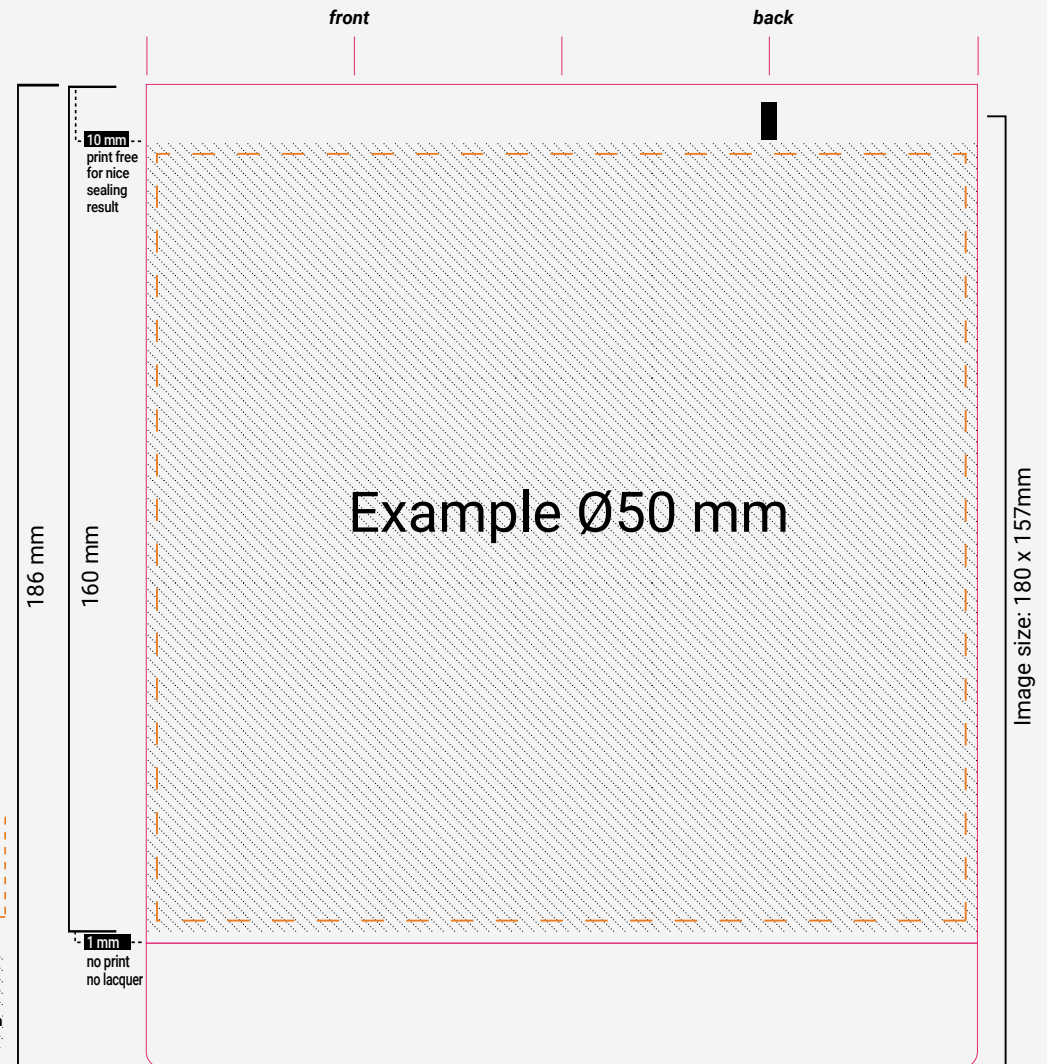
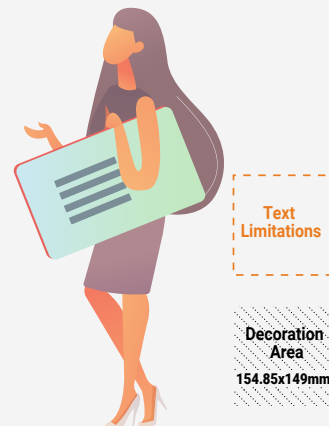
### Eye mark

The eye mark is used by the filling machine to orient the tube so that the sealing operation always occurs at the right position. Keep white background in the upper 8-10mm of the artwork to enable the eye mark readability of the filling machine.



# Do's & Don'ts

- Printing in extended color gamut
- Text and images should go on different layers
- Eye mark: Black or dark color on top of clear colours background or white (as a cut out) on dark color back ground in terms of recognition by the filling and sealing machines. Recommended size: 2-3 mm x 7-8 mm. That decision is usually to be taken by the filler and may depend on their actual machine sensor sensitivity. More important: The reading zone of the registration mark should be free of any other type of pattern that may create interference (except a flat color back ground).
- Minimum positive text size 6 pt (small letters like "e, a, o" = 0.95 mm high / line width 0.1 mm)
- Minimum negative text size 7pt (small letters like "e, a, o" = 1 mm high / line width 0.2 mm)
- For small texts we recommend to use base colors, preferably black (K=100)

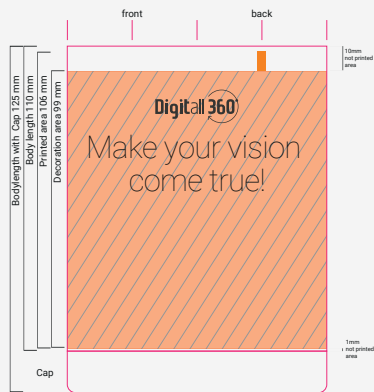


# Design Templates

## Body printing

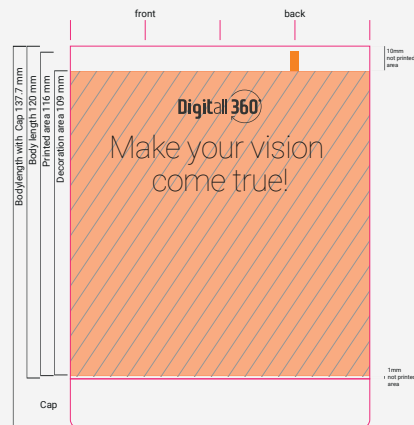
30  
x 110 mm

Decoration area:  
W **93.6 mm**  
H **99 mm**



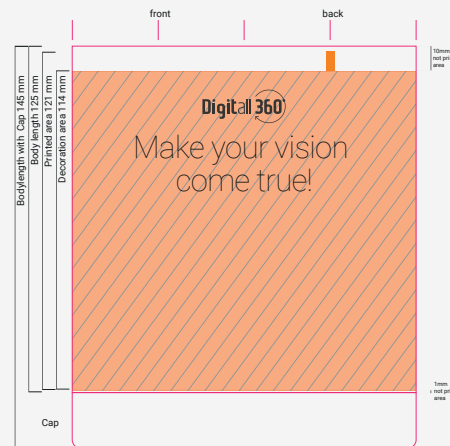
35  
x 120 mm

Decoration area:  
W **108 mm**  
H **109 mm**



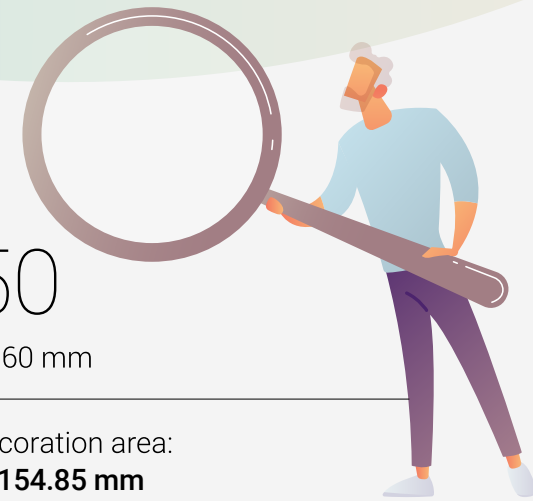
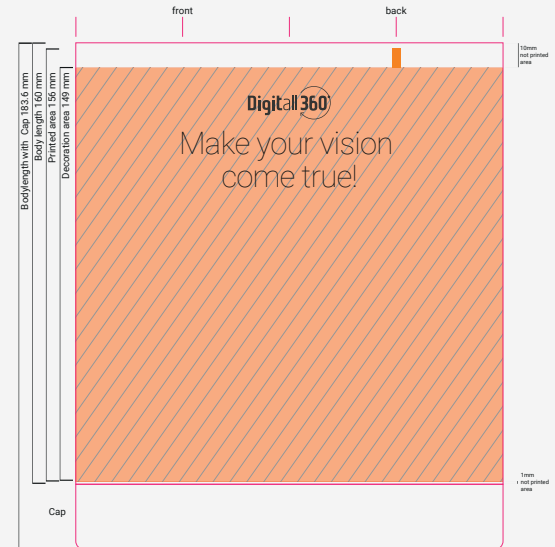
40  
x 125 mm

Decoration area:  
W **124.04 mm**  
H **114 mm**



50  
x 160 mm

Decoration area:  
W **154.85 mm**  
H **149 mm**

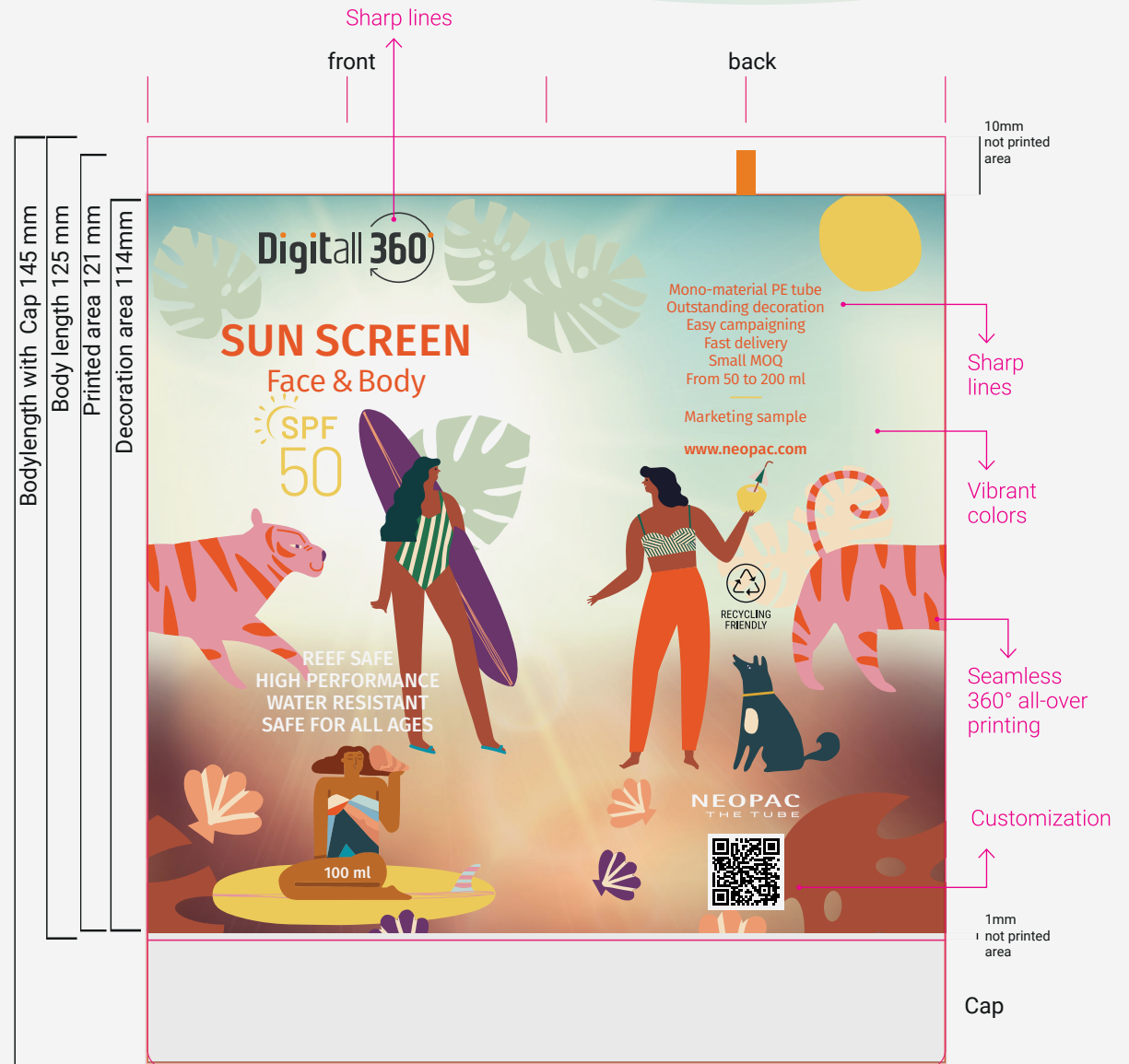


**You can find the correct layouts attached to this PDF file.**

No bleed needed, please position the front and back side without considering any colour overlapping!

# Design Templates

## Design Sample Ø40 mm Tube



Please follow this guide to get the sharpest result with your small texts:

	font type		
	sans-serif	serif	script
color	recommended font size		
bright	6 pts	8 pts	10+ pts
dark	6 pts	8 pts	10+ pts
pure black (100% K)	6 pts	8 pts	10+ pts

Colour/text combinations not advised (in terms of background colour)

dark background + white text under 7 pts

dark background + coloured text under 7 pts

white background + bright text (which consists of more than 4 basic colours) under 7 pts

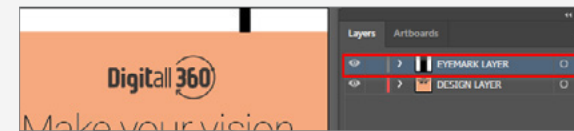
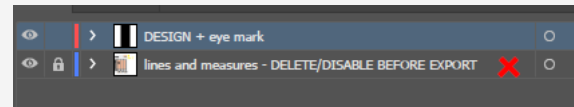
# Exporting your PDF

## Info

### General

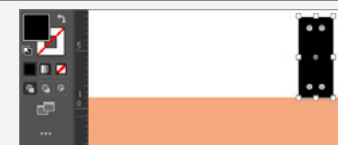
1. Please do not modify the artboard as it is defined to fit perfectly for printing.
2. Please make sure to delete the “lines and measure” layer before export.
3. Only your design and the eye mark should be visible when exporting to PDF.

154,85 mm width - for diameter 50 mm  
124,04 mm width - for diameter 40mm  
108 mm width - for diameter 35 mm  
93,6 mm width - for diameter 30 mm



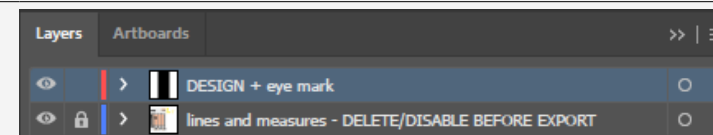
### Eye mark

4. Do not remove, move or hide the EYEMARK LAYER.
5. You can change the eye mark color, respecting the contrast requested by the tube filling machine.



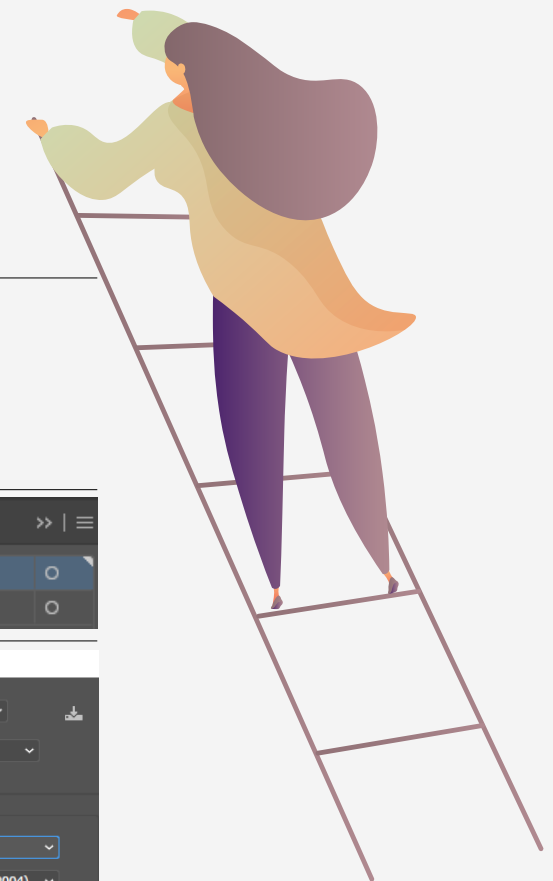
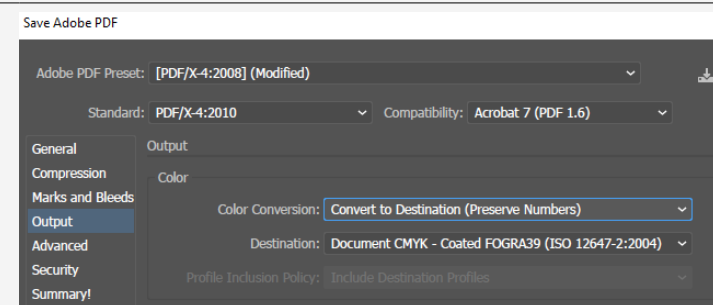
### Artwork design

6. Place your artwork on the DESIGN + eye mark LAYER only.

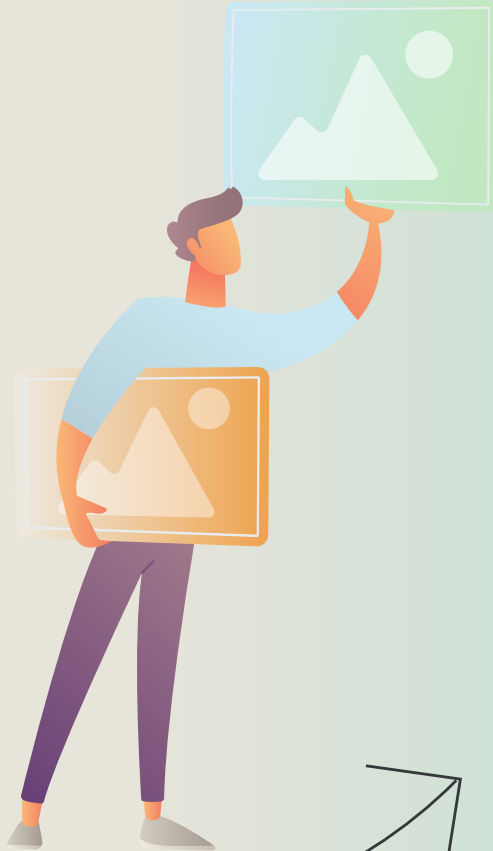


### Export

7. The final PDF should be saved with these settings:



# Additional Service



Need  
additional  
support?

**Book online to get expert's  
advice or visit:**

[shop.neopac.com/faq](http://shop.neopac.com/faq)

