



www.maypakcn.com



WeChat

Worldwide Marketing & Sales

MAYPAK PACKAGING CO.,LTD

Add: 33Shiji Rd,Mazhu Developing Zone,
Yuyao 315400,Zhejiang,China

Tel: 0086-574-62790606
Cell No.: 0086-18657435151
Fax: 0086-574-62790909
E-mail: sales@maypakcn.com
Http://www.maypakcn.com

Manufacturing Facility In Ningbo China

YUYAO S&M PACKAGING CO.,LTD

Add: 15Shiji Rd,Mazhu Developing Zone,
Yuyao 315400,Zhejiang,China

Tel: 0086-574-62795578
Cell No.: 0086-13958350674
Fax: 0086-574-62790909
E-mail: sales@smcospack.com

MayPak
美派包装

MAYPAK PACKAGING

Hot Sale & New Arrival
www.maypakcn.com
>>>>>>



MAYPAK 2023

INDEX

01 SPRAYERS

- 05 Mini Trigger Sprayers
- 06 High-Grade Trigger Sprayers
- 07 Trigger Sprayers
- 08 All Plastic Trigger Sprayers
- 09 All Plastic Lotion Pumps
- 10 Lotion Pumps
- 11 Long Nozzle pumps
- 12 All Plastic Foam Pumps
- 13 Foam Pumps
- 14 All Plastic Fine Mist Sprayers
- 15 Caps
- 16 Mini Spray Bottles & Sustainable Sprayers
- 17 ABS Shell UV Coating

02 COSMETICS PACKAGING

- 18 Airless Bottles
- 21 Plastic Bottles Sets
- 22 Deodorant Stick Containers
- 23 Essential Oil Caps
- 24 Essential Oil Bottles & Essential Oil Droppers
- 27 Eye Cream Bottles
- 28 Dual Tube Bottles
- 29 Plastic Tubes
- 30 Cream Jars
- 31 Nail Polish Remover Pump Dispensers

ABOUT US

Yuyao MAYPAK Packaging Co., Ltd. designs, develops and manufactures plastic and metal spray dispensers, packaging for cosmetic, personal care and general merchandise industries. Our packaging products include plastic and metal fine mist sprayers, crimp sprayers, lotion pumps, treatment pumps, airless dispensing containers, standard triggers, mini trigger sprayers, glass, plastic and acrylic bottles, plastic tubes and turned edge boxes. We design and produce our own molds with customized shapes, sizes, colors and decorations. Our innovative designs and superior engineering departments can develop new items quickly at reasonable prices.



GLOBAL SERVICE

We are looking for strategy alliance and for the integration to international market.



COOPERATIVE PARTNER

Win-win Cooperation and Create a Future.



MINI TRIGGER SPRAYERS / 手扣式喷雾器系列



SM12B

Discharge Rate: 0.50-0.55 ml/T
 Φ24/410, Φ28/410 (Smooth)
 Φ28/410 (Ribbed)



SM1104

Discharge Rate: 0.30 ml/T
 Φ20/410, Φ24/410, Φ28/410



SM1105B

Discharge Rate: 0.30 ml/T
 Φ20/410, Φ24/410, Φ28/410



SM13B

Discharge Rate: 0.25-0.30 ml/T
 Φ20/410, Φ24/410, Φ28/410



SM13C02-B

Discharge Rate: 0.30 ml/T
 Φ20/410, Φ24/410, Φ28/410



SM13F

Discharge Rate: 0.30 ml/T
 Φ20/410, Φ24/410, Φ28/410



SM13F02

Discharge Rate: 1cc
 Φ28/410



SM13F03

Discharge Rate: 1cc
 Φ28/410

ALL PLASTIC TRIGGER SPRAYERS

全塑枪系列



- All plastic design makes the product highly compatible, recyclable and environmentally friendly.
- Special plastic spring offers soft feeling when pull the trigger.
- Various screw type options.
- Foam nozzle available.
- Household cleaning products.
- Aggressive liquids.

SM1801



Nozzle Options:



SPRAY/STREAM A
PLASTIC MESH/FOAM C
SPRAY/OFF STREAM D

Closure Options:



Φ28/400,
Φ28/410
RATCHET

Discharge rate: 1.20-1.40ml/T
QTY: 400PCS/CTN
Meas: 54*38*38cm

SM1804



Nozzle Options:



FOAM
SPRAY/OFF
SPRAY/OFF STREAM

Trigger Options:



Closure Options:



Φ28/400, Φ28/410
RATCHET

Discharge rate: 1.40ml/T
QTY: 500PCS/CTN
Meas: 60*38*44cm

SM1806



Nozzle Options:



SPRAY/STREAM C
SPRAY/SPRAY D
FOAM F

Closure Options:



Φ28/400, Φ28/410
Φ28/410(MAX) RATCHET E
Φ28/410(MAX) RATCHET F

Discharge rate: 1.20-1.40ml/T
QTY: 400PCS/CTN
Meas: 55*45*38cm

SM1811



Nozzle Options:



SPRAY A
FOAM B

Closure Options:



Φ28/400,
Φ28/410

Discharge rate: 1.20ml/T
QTY: 500PCS/CTN
Meas: 60*39*45cm

ALL PLASTIC LOTION PUMPS

全塑乳液泵系列

- All plastic design makes the product highly compatible, recyclable and environmentally friendly.
- Different closure options and shape processing procedure.
- Special structure design principle makes pump safer and widely using.



Discharge Rate: 2.3±0.3ml/T

Smooth / Ribbed
Closure: 24/410 28/410

QTY: 1000PCS/CTN (24/410)
800PCS/CTN (28/410)

Meas: 54×38×38 cm

LOTION PUMPS / 乳液泵系列



TWIST LOCK

SM21A

Discharge Rate: 1.20-1.50 ml/T
 Ø24/410, Ø28/410
 Smooth / Ribbed / Aluminum



TWIST LOCK

SM22A

Discharge Rate: 2.00-2.20 ml/T
 Ø24/410, Ø28/400, Ø28/410
 Smooth / Ribbed / Aluminum



SCREW DOWN

SM23A

Discharge Rate: 1.80-2.00 ml/T
 Ø24/410, Ø28/410
 Smooth / Ribbed / Aluminum



SCREW DOWN

SM23C

Discharge Rate: 1.80-2.00 ml/T
 Ø24/410, Ø28/410
 Smooth / Ribbed / Aluminum



All plastic

SM2802

Discharge Rate: 1 cc
 Ø24/410, Ø28/410
 Smooth / Ribbed



All plastic

SM2803

Discharge Rate: 1 cc
 Ø24/410, Ø28/410
 Smooth / Ribbed

LONG NOZZLE PUMPS / 长杆系列



SPRAY & LOTION

SM2904

Discharge Rate: 2cc
 Ø24/410, Ø28/410
 Discharge Rate: 4cc
 Ø28/410, Ø33/410, Ø38/400, Ø38/410



SPRAY & LOTION

SM2905

Discharge Rate: 2cc
 Ø24/410, Ø28/410
 Discharge Rate: 4cc
 Ø28/410, Ø33/410, Ø38/400, Ø38/410



SM2906

Discharge Rate: 2cc
 Ø24/410, Ø28/410



SPRAY



SM2907-1

Discharge Rate: 2cc
 Ø24/410, Ø28/410
 Nozzle Length: 4cm



SPRAY

LOTION



SM2907-2

Discharge Rate: 2cc
 Ø24/410, Ø28/410
 Nozzle Length: 6cm



SPRAY

LOTION



SM2907-3

Discharge Rate: 2cc
 Ø24/410, Ø28/410
 Nozzle Length: 8cm

ALL PLASTIC FOAM PUMPS

全塑泡沫泵系列

Innovative plastic spring design eco friendly,
mono materials all PP or all PE.



SM3139

Discharge Rate: 1.0±0.2ml/T
Closure: 43/410

FOAM PUMPS / 泡沫泵系列



SM3127

Discharge Rate: 0.80±0.12 ml/T
Ø 43mm



SM3128

Discharge Rate: 0.80±0.12 ml/T
Ø 40mm



SM3129

Discharge Rate: 0.80±0.12 ml/T
Ø 43mm



DOUBLE WALL



SM3136

Discharge Rate: 0.25cc
Ø 24/410



DOUBLE WALL



SM3137

Discharge Rate: 0.25cc
Ø 20/400 Ø 20/410



DOUBLE WALL



SM3138

Discharge Rate: 0.25cc
Ø 24/400 Ø 24/410

ALL PLASTIC / 全塑小喷雾系列

FINE MIST SPRAYERS



SM41001

Discharge Rate: 0.14-0.16 ml/T
 Ø 18/410 Ø 20/410
 Smooth / Ribbed



SM41002

Discharge Rate: 0.14-0.16 ml/T
 Ø 24/410 Ø 28/410
 Smooth / Ribbed



SM41003

Discharge Rate: 0.14-0.16 ml/T
 Ø 20/410 Ø 24/410
 Smooth / Ribbed



SM41004

Discharge Rate: 0.14-0.16 ml/T
 Ø 30
 Smooth / Ribbed



SM41005

Discharge Rate: 0.14-0.16 ml/T
 Ø 18/410 Ø 20/410
 Ø 24/410 Ø 28/410
 Smooth / Ribbed



SM41006

Discharge Rate: 0.14-0.16 ml/T
 Ø 18/410 Ø 20/410 Ø 24/410
 Smooth / Ribbed



SM41007

Discharge Rate: 0.14-0.16 ml/T
 Ø 18/410 Ø 20/410 Ø 24/410
 Smooth / Ribbed



SM41008

Discharge Rate: 0.14-0.16 ml/T
 Ø 18/410 Ø 20/410
 Ø 24/410 Ø 28/410
 Smooth / Ribbed

CAPS / 盖子系列



Disc Top Caps - SM7101



Ø18/410



Ø18/415



Ø20/410



Ø20/415



Ø24/410



Ø24/415



Ø28/410



Ø28/415

Flip Top Caps - SM72



Ø18/410



Ø20/410



Ø24/410



Ø28/410

Screw Caps - SM7306



Ø18/410, Ø20/410, Ø24/410, Ø28/410

Push Pull & Twist Caps - SM7402



Ø28/410

Other Caps - SM7501A



Ø20/410, Ø24/410, Ø28/410

MINI SPRAY BOTTLES

卡片瓶系列



SM5201-20A
20ml



SM5215-A
45ml



SM5215-B
45ml

- Bottle is made by good quality PP, singly formed and also environmentally protected.
- The bottle is small and easy to take.

SUSTAINABLE SPRAYERS

连续喷系列

- Misty-like spray adheres evenly and perfectly to all kind of surfaces.
- Liquid is expelled with aplomb thanks to pre-compression technology.
- Large areas are covered quickly and easily, without gaps.



SM53-1
200ml / 300ml



SM53-2
200ml / 250ml / 360ml / 500ml

ITEMS SM3140/SM4901/SM6507/SM24/SM25C are customer private mold and it can't be sold externally. We are accepted customization new products.



★ **SM3140**
Ø18/415 Ø20/400 Ø20/415



★ **SM4901** Ø20/410



★ **SM6507** Ø24/410



SM7123 Ø20/410
SM7125 Ø24/410



★ **SM24** Ø24/410



★ **SM25C** Ø28/410



SM7132 Ø20/410(Out Dia:33.5mm)
SM7133 Ø20/410(Out Dia:39.5mm)
SM7129 Ø24/410(Out Dia:48mm)

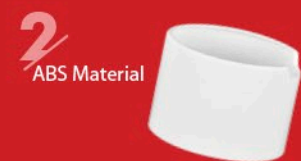


SM7319 Ø58/400
SM7320 Ø70/400
SM7321 Ø89/400

ABS SHELL UV COATING

The reasons why aluminum shelled caps can be replaced by ABS ones

- Eco-friendly
- Shorter delivery time
- Uneasy to be scratched
- Lower price



AIRLESS BOTTLES

真空瓶系列

- Vacuum insulation, vacuum preservation, simple design ,easy filling.
- Professional dispensing, environmentally friendly, tasteless, durable and recyclable.

Capacity	P(mm)	H (mm)	D(mm)	Material
30ml	47.0	82.0	45.0	pp
50ml	64.0	99.0	45.0	
80ml	87.0	121.0	45.0	
100ml	104.0	138.0	45.0	
120ml	115.0	150.0	45.0	
135ml	131.0	165.0	45.0	
200ml	183.0	217.0	45.0	

MP5108



AIRLESS BOTTLES

真空瓶系列

Capacity	H (mm)	D (mm)	Material
15ml	95.0	33.0	AS,PP
30ml	118.0	33.0	
50ml	148.0	33.0	
80ml	153.0	40.0	
100ml	173.0	40.0	
120ml	176.0	40.0	
200ml	212.0	47.0	



MP5225



MP5102

Capacity	H (mm)	D (mm)	Material
15ml	77.1	35.0	pp
30ml	98.3	35.0	
50ml	124.8	35.0	



MP5130

Capacity	H (mm)	D (mm)	Material
150ml	149.0	55.0	pp
200ml	173.0	55.0	
250ml	198.0	55.0	



MP5227

Capacity	H (mm)	D (mm)	Material
5ml	65.0	25.0	pp
10ml	77.0	25.0	
15ml	92.0	25.0	

MP5109



Capacity	H (mm)	D (mm)	Material
6ml	77.0	19.0	AS
10ml	98.0	19.0	
12ml	112.0	19.0	
15ml	127.0	19.0	

MP5253



Capacity	H (mm)	D (mm)	Material
15ml	79.0	32.0	PP
30ml	102.0	32.0	
50ml	135.0	32.0	

MP51002



Capacity	H (mm)	D (mm)	Material
15ml	105.3	32.0	PP
30ml	123.7	32.0	
50ml	162.0	32.0	

AIRLESS BOTTLES 真空瓶系列



Capacity	H (mm)	D (mm)	Material
30ml	84.0	48.0	PP
50ml	93.0	48.0	
75ml	109.4	48.0	
100ml	125.6	48.0	
150ml	160.0	48.0	



MP5298

MP5299

All Plastic



Silicone Spring

Capacity	H (mm)	D (mm)	Material
35ml	84.0	48.0	PP
50ml	93.0	48.0	
75ml	109.4	48.0	
100ml	125.6	48.0	
120ml	145.0	47.0	
150ml	160.0	47.0	

MP51001



Capacity	H (mm)	D (mm)	Material
35ml	93.0	47.0	PP
50ml	108.0	47.0	
80ml	128.0	47.0	
100ml	145.0	47.0	
120ml	159.0	47.0	
150ml	182.0	47.0	

PLASTIC BOTTLE SETS 塑料瓶系列

- High material transparency, good sealing, prevent leakage.
- Never Worry About Leaks Damaging Your Other Stuff or Wasting Anything.
- Bottleneck with spiral design, easy to open.



MP4113

30ml, 50ml, 60ml (D:33.5mm Closure:Ø20)
60ml, 80ml, 100ml, 120ml (D:35.5mm Closure:Ø22)



MP4138

100ml, 120ml, 150ml



MP4144

100ml, 120ml, 150ml, 200ml



MP4146

80ml, 200ml, 300ml, 500ml



MP4148

300ml, 500ml



SM4603

Ø43/410 250ml, 450ml, 650ml

DEODORANT STICKS CONTAINERS

膏体管系列



MP1207

7g 15g 30g 50g 75g 90g

HEALTHY: Avoid commercial chemicals and allergic reactions by making your own all-natural deodorant; safe BPA-free plastic containers.

FILL-FROM TOP STYLE: This is the fill from top style avoiding leaky bottom issues.

REPLACEABLE DEODORANT STICKS

可替换膏体管系列



MP1214

30g 50g

Round Refillable Deodorant Containers in recyclable PCR plastic.

Introduce new and innovative packaging materials and scale up new business models, like this reusable and refillable deodorant container.

Eco-friendly material PCR

ESSENTIAL OIL CAPS

/ 精油盖系列

- Threaded cover, tight and easy to open and prevent leakage.
- The bottle cap is simple and atmospheric, suitable for a variety of bottle mouths.
- Used for daily necessities, cosmetics, medical industry, etc.
- Adhere to the use of environmentally friendly materials, good sealing, Security anti-theft design.



MP3138-A
Φ18



MP3138-B
Φ18



MP3138-I
Φ18



MP3138-J
Φ18



MP3138-K
Φ18



MP3138-L
Φ18

OTHERS



MP3138-G
Φ18 Φ20 Φ24 Φ28
Φ32 Φ38 Φ48 Φ54



MP3138-H
Φ18 Φ20 Φ22 Φ24



MP3138-M
Φ18

ESSENTIAL OIL BOTTLES 精油瓶系列

- Corrosion-resistant, basic and most types of Essence no chemical reaction.
- Heat and low temperature, storage time longer than plastic bottles.



MP3104-A WITH ESSENTIAL OIL CAP
5ml 10ml 15ml 20ml 30ml 50ml 100ml

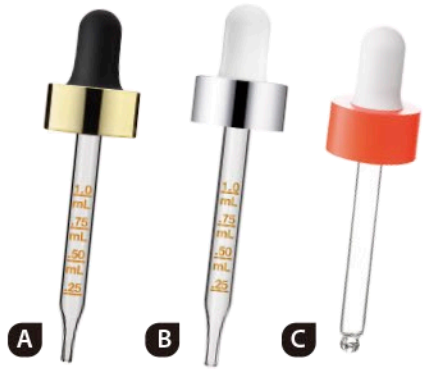


MP3104-B WITH ESSENTIAL OIL DROPPER
5ml 10ml 15ml 20ml 30ml 50ml 100ml

ESSENTIAL OIL DROPPERS 滴管系列

MP3137

ABS SHELL UV COATING



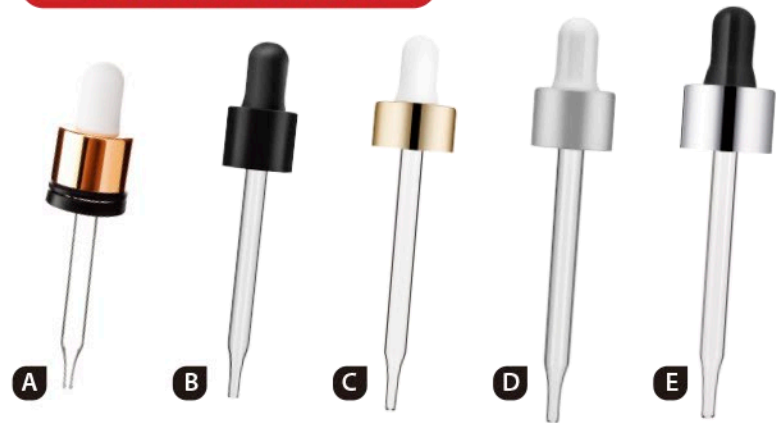
Φ20/400 | Φ20/415 | Φ18/415

PETG CLOSURE



Φ18/410 | Φ18/400 | Φ20/410

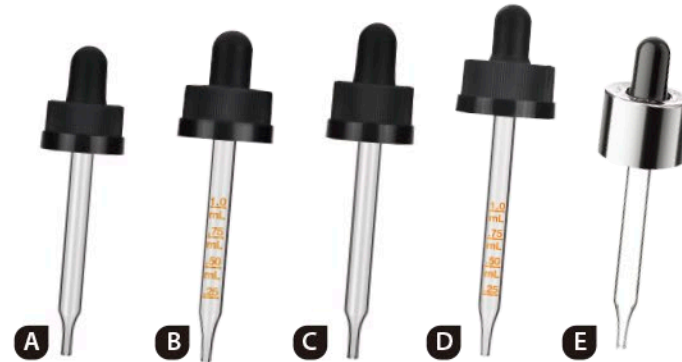
ALUMINUM COLLAR



Φ18/400 | Φ18/415 | Φ20/400 | Φ20/410 | Φ24/410

- Selection of high quality PP material, NBR material/Silica gel material, ABS collar, Aluminum collar, Glass/Plastic dropper (Glass dropper can be custom the length, which the plastic can not) Selection of the closure.
- TE, TE/CR, CR and normal closure.
- Selection of several different shape of rubber head.

CHILD RESISTENT (CR)



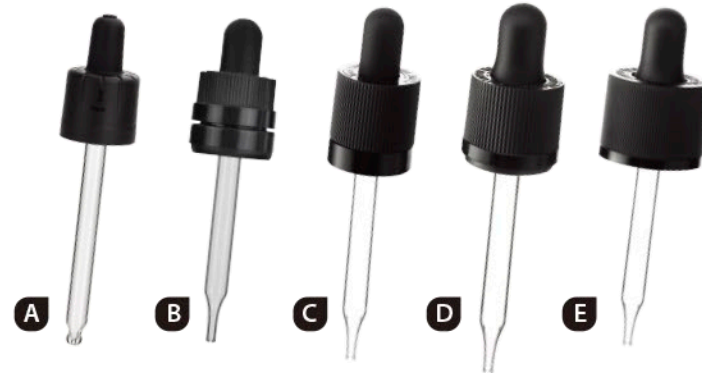
Φ18/400 | Φ18/415 | Φ20/400 | Φ22/400 | Φ24/400

TAMPER EVIDENT (TE)



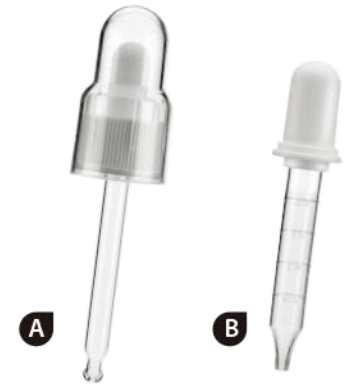
Φ18/410

TAMPER EVIDENT&CHILD RESISTENT (TE&CR)



Φ18 | Φ18 | Φ18 | Φ18 | Φ20

OTHERS

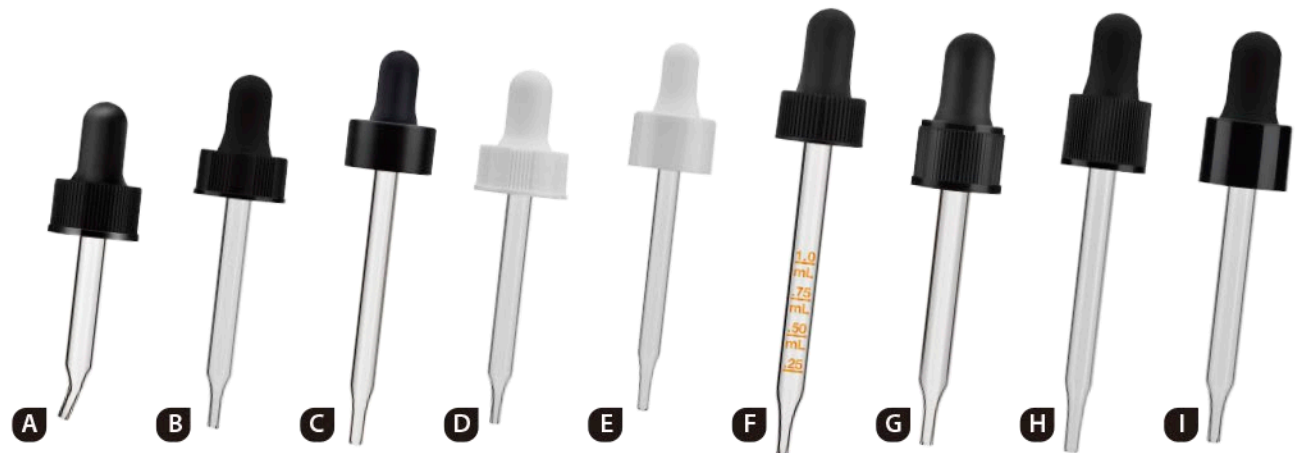


Φ20/410

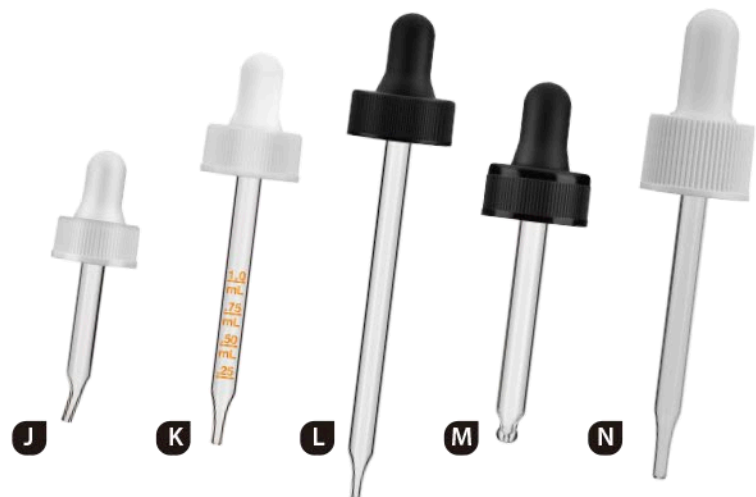
ESSENTIAL OIL DROPPERS / 滴管系列

MP3137

ORDINARY



A Φ20/400 | B Φ20/400 | C Φ20/400 | D Φ18/400, Φ20/400, Φ22/400 | E Φ18/415, Φ20/410 | F Φ18/400 | G Φ18/410 | H Φ18/415 | I Φ18/415

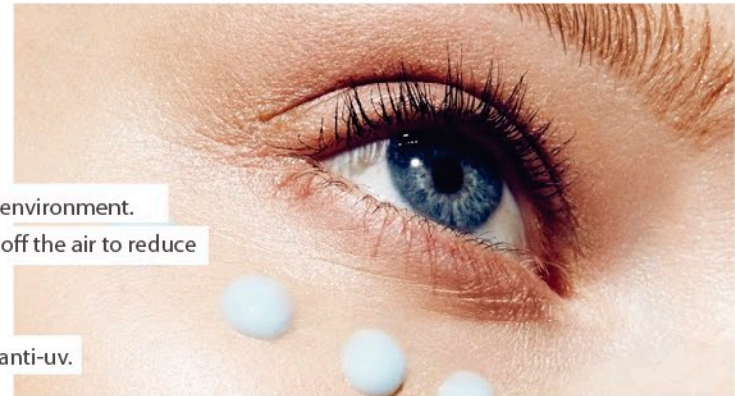


J Φ22/400 | K Φ24/400 | L Φ24/400 | M Φ28/400 | N Φ24/410



EYE CREAM BOTTLES

/ 眼霜管系列



- High quality material, non-toxic and tasteless, safe and pro-environment.
- Vacuum pump design, essence only out without waste, cut off the air to reduce the probability of deterioration.
- High quality PP pump, smooth discharge, durable in use.
- AS material, not easy to break, sealed for anti-pollution and anti-uv.



DUAL TUBE BOTTLES

/ 双管系列



MP5244

10mlx2, 15mlx2



MP5261

25mlx2, 40mlx2



MP5126

10mlx2, 20mlx2, 30mlx2



MP51010

15mlx2, 30mlx2



MP51013

20ml, 30ml, 40ml



MP5255

5mlx2, 10mlx2, 15mlx2

PLASTIC TUBES

/ 塑料软管系列

MP81



PBL TUBE

全塑管

- Better visual impact
- Unbounded originality freedom
- 360°all round seamless design
- Implement on multi-layer barrier web



ABL TUBE

铝塑管

- Metallic luster impression
- Unrestricted printing design
- Excellent resistance performance



SUPER NATURE TUBE & SUGARCANE LDPE TUBE

纸塑管 & 甘蔗料软管

- Super natural concept
- Unbounded design
- Environmental friendly

CREAM JARS

膏霜盒系列



MP5131
15g, 30g, 50g



MP6216
50g, 100g, 150g, 200g



MP6222
20g, 50g, 100g, 150g, 250g

MP6235

30g, 60g, 80g, 100g
120g, 150g, 180g, 200g



MP4109

Customized super oil resistant imported material, guaranteeing the reliability of the product, and making it unprecedented.

External springs and the full range of imported materials, having passed the SGS safety standard.

Automatic liquid-collecting design to eliminate contamination by overflow.

High-viscosity internal soluble matter being easily pumped out.

A negative pressure of 0.08MPa, eliminating leakage.



PE Piston

NAIL POLISH REMOVER PUMP DISPENSERS 卸甲油泵系列



A Ø24/410 Ø33/410



B Ø24/410



C Ø33/410



D Ø24/410