

RO-TRC-5

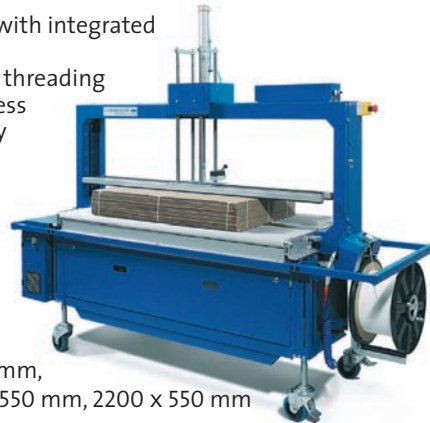
Fully-Automatic Corrugated Cardboard Strapping Machine

- Centre seal machine with integrated conveyor
- Fully automatic strap threading
- Pneumatic double press
- Improved accessibility

Optional:

- Electrical alignment device and lateral back stop
- Also available with **SONIX** sealing head

Frame sizes: 1250 x 550 mm, 1650 x 550 mm, 2000 x 550 mm, 2200 x 550 mm

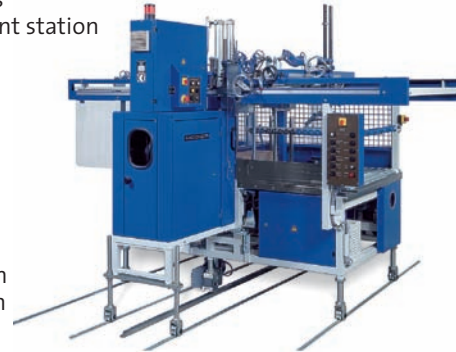


RO-ATRS

Fully-Automatic Strapping Machine

- Infinitely adjustable conveying speed
- Fully-automatic strap threading system
- Exact package squaring to all sides
- PLC control Siemens
- Pneumatic alignment station
- Wear-free DC drive brushless motor technology

Passage widths:
900 mm / 1300 mm
1650 mm / 1950 mm
2200 mm



RO-ATRS-K

Fully-Automatic Strapping Machine for Strapping of 4- and 6-Corner Boxes as well as Crash-Lock Bottom Boxes

- Pneumatic press, side pusher, package back stops
- Fully-automatic strap threading system
- Wear-free DC drive brushless motor technology
- Pressure wheels bar
- Infinitely adjustable conveying speed
- PLC control Siemens

Passage widths:
750 mm / 900 mm /
1300 mm / 1650 mm



UATRI-2

Fully-Automatic In-Line Strapping Machine with Aligning Station

- Automatic format set-up-/data transfer
- Very economical – no pneumatics
- 100% package squaring (6-sided bundle control)
- Strap welding device

Passage widths:
1300 mm
1600 mm
2000 mm



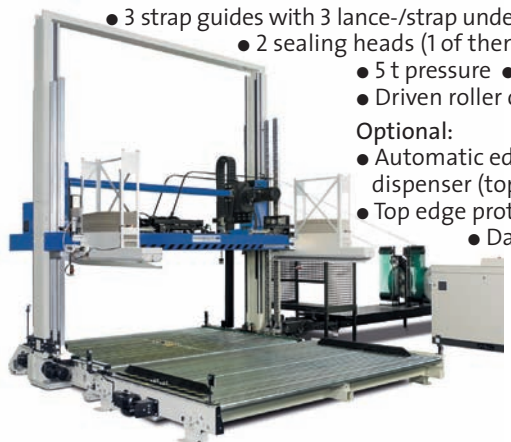
KPK-131-32

Fully-Automatic Pallet Packing Press to Secure Pallet Loads

- 3 strap guides with 3 lance-/strap underfeed change-over
- 2 sealing heads (1 of them side-moveable)
- 5 t pressure • Lifting turn cross
- Driven roller conveyor

Optional:

- Automatic edge protection dispenser (top and bottom)
- Top edge protection printer
- Data interface
- Strap welding device
- Also available with **SONIX** sealing head



POLYESTERBAND / POLYPROPYLENBAND

- Polyester strap: width from 9,5 mm – 15,0 mm
- Polypropylene strap: width from 5,0 mm – 15,0 mm



03 / 10 Subject to alterations

Gerd-Mosca-Straße 1
D-69429 Waldbrunn/Strümpfelbrunn
Tel.: +49 (0)6274/932-0
Fax: +49 (0)6274/932-400 118
Tel. After Sales: +49 (0)6274 / 9 32-100
Internet: <http://www.mosca-ag.com>
E-Mail: info@mosca-ag.com

MASCHINENFABRIK GERD MOSCA AG



MOSCA AG stands for a worldwide, professional consulting, highest machine quality, optimal strapping material and a global, integrated service concept.

FULLY AUTOMATIC IN-LINE-STRAPPING MACHINE



MCB

MCB

The Mosca MCB squaring and strapping system is the newest generation of corrugated bundle squarer-strappers from the Company that developed the integrated squaring-strapping concept. The MCB features fast automated setup changes, smooth bundle control and transport using variable frequency drives and the latest in brushless dc technology for extreme strap sealer reliability and low maintenance. Throughput capability is max. 25 bundles per minute. Straps are applied in the direction of bundle travel.

SYSTEM FEATURES

- Siemens S7 PLC control with "Proface" touch panel operator interface
- Integrated squaring and strapping functions
- Automated setup system resets to the dimensions of the first bundle of the new size, at the push of a button or signal from the upstream equipment.
- Control of six sides of the bundle provides perfectly squared, uniform bundles
- Electrically driven, variable frequency controlled squaring and top/bottom conveyors provide smooth bundle transport
- Choice of single or double strapping mechanisms to meet individual requirements
- Electrically driven bundle compression
- Strapping in the direction of bundle travel, typically in-line with flutes
- Optional exit conveyor belt for the last bundle

STRAPPING TECHNOLOGY

- A pusher drives the bundle through pre-draped strap, placing strap on three sides. Swing arm pulls strap past the fourth side, completing the loop and activating the heat seal.
- Electrically controlled strap tension
- DC brushless technology for swing arm and sealer
- Thermocouple controlled heat sealing system reaches operating temperature in 10 seconds

OPTIONS

- One or two strapping stations. Choice of left or right hand configuration for single strap units.
- Powered conveyor belt to remove the last bundle of each run. Bundles are normally pushed out by the next bundle through the system.
- Powered adjustment of machine centerline. This is attractive when bundles are not centered or when strapping off the center line is common.
- Trouble light and low strap indicator
- Upstream pacer conveyor
- Special color

TECHNICAL DATA

CAPACITY:

max. 25 cycles per minute.

STRAPPING:

Machine grade 5 – 9 mm Polypropylene
Inquire for other strap widths

COIL DIMENSION:

Core diameter: 200 mm
Coil width: 190 mm

ELECTRICAL SPECIFICATIONS:

Voltage: 400 V (415, 440),
50/60 Hz, 3 PH
16 A CEE Stecker

Consumption: approx. 4,2 kVA

CONVEYOR HEIGHT:

800 – 1030 mm

COLOR:

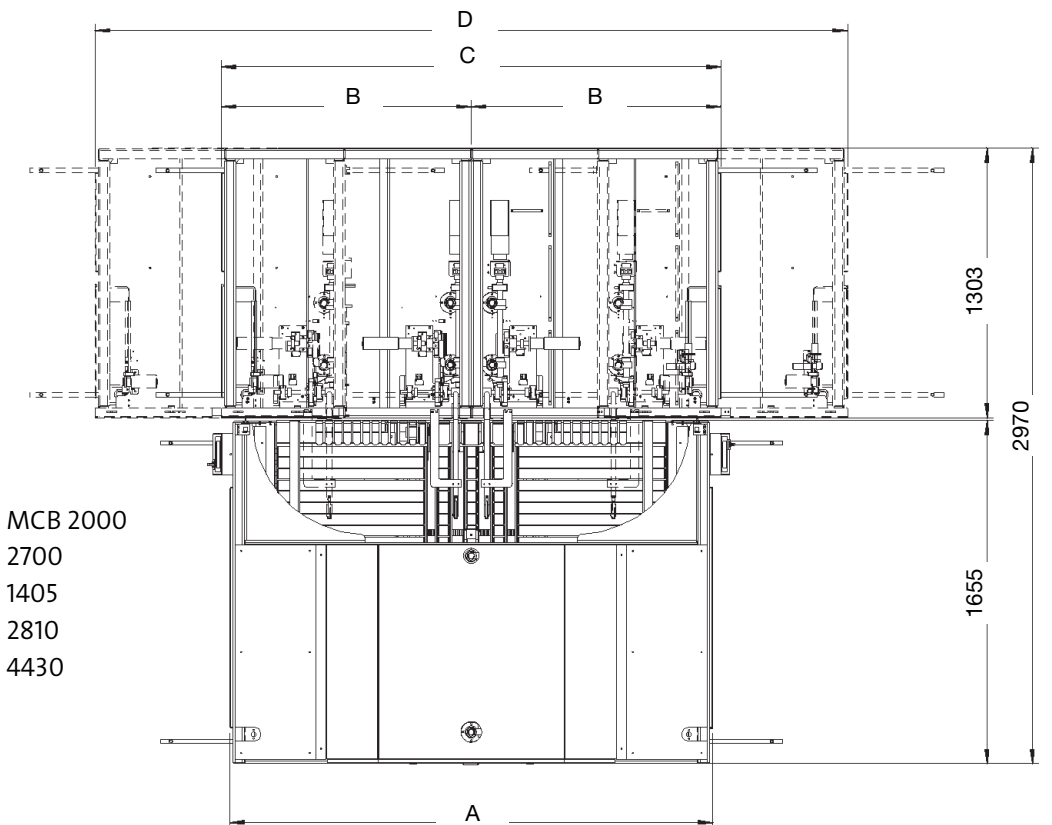
Frame: RAL 5010 gentian blue
Panels and guards: grey

SIZES:

Nominal width	1300 mm	1600 mm	2000 mm
Length min.	170 mm	170 mm	170 mm
Length max.	1300 mm	1600 mm	2000 mm
Width min.	170 mm	170 mm	170 mm
Width max.	1300 mm	1600 mm	2000 mm
Height min.	30 mm	30 mm	30 mm
Height max.	350 mm	350 mm	350 mm

Twin pushers standard.
Bundle lengths > 1200 mm have single pusher

MCB



DIMENSIONS:

	MCB 1300	MCB 1600	MCB 2000
A	2000	2300	2700
B	1205	1205	1405
C	2410	2410	2810
D	3330	3630	4430

