



Global Product Portfolio
Dispensing
Closures





A better fit, a better experience

At Silgan Dispensing, we pride ourselves on creating state-of-the-art packaging solutions for the world's most admired brands. Together, our insight, expertise, ingenuity and agility provide our customers and theirs with a better dispensing experience.

Whether you are in the market for a standard or fully customized closure, we will collaborate closely with you on a solution that delivers superior performance, outstanding differentiation and seamless production. And, because we offer many customization capabilities in-house, we're able to create sophisticated closures that fit your needs without compromising speed-to-market.

If you're looking to deepen your understanding of consumer preference, improve product performance and serve up a fresher, safer and more convenient dispensing experience—we're here to help.



Standard Dispensing Closures

Spouts

Spouted and Applicator

- Pinpoint directional dispensing
- Dual color capability
- Orifice sizes from dropper to large rectangle
- Lining capability
- Child-resistant options available
- Friction fit and threaded
- Custom and stock
- Popular sizes for bottles, tubes and cans
- Ideal for chemical, automotive, household products and more



Polycam

Snap-Action and One-Piece Closures

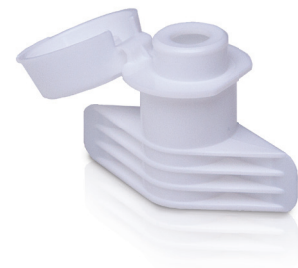
- Innovative designs for bottles, tubes and tottles
- Attractive smooth wall and serrated style
- Custom and stock
- Logo insert capability
- Lining capability
- Ergonomic thumb lifts
- Easy open/easy close
- Non-protruding hinges
- Clog-resistant orifices
- Friction fit and threaded
- Orifice sizes 1.5 mm (0.060") to 18.5 mm (0.728")



FlexFit™

One-Piece, Flip-Top Pouch Fitment

- Convenient, single-piece closure
- Quick and easy-to-use flip top
- Latch back feature allows for mess-free dispensing
- Less material than similar closures on the market
- Orifice sizes: 8.6 mm round, 6 mm round and 4x8.6 mm ribbon
- Suitable for food and non-food applications



Custom Dispensing Closures

Silgan Dispensing will assist you in bringing your ideas from concept to completion.

Design phase

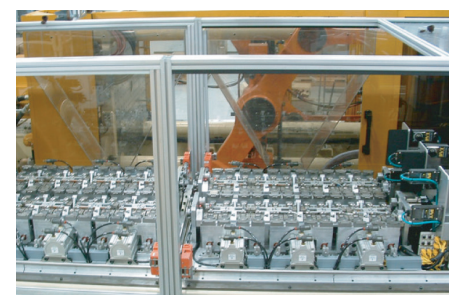
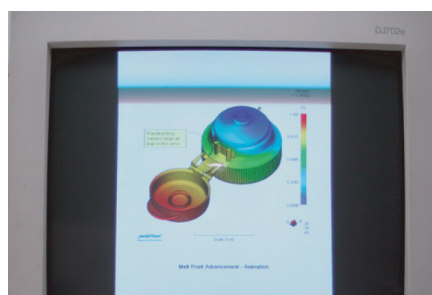
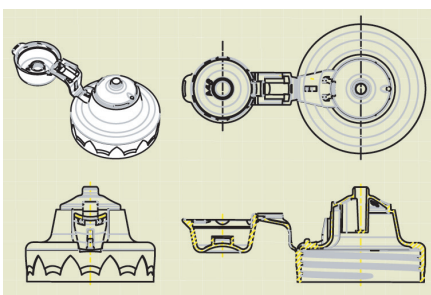
- Industrial design
- 3D concept renderings
- SLA presentation models

Engineering phase

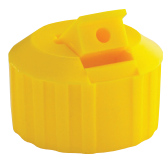
- Mold filling analysis
- Finite element analysis
- Prototype molded samples

Production phase

- High-volume turnkey systems
- Robotic automation
- 100% vision inspection



Spouted 28 mm



PS254

Size/Finish
28/400

Emboss
No

Seal Type
Land

Orifice Sizes
3 mm x 6 mm,
3 mm, 2.5 mm,
2 mm, 1 mm

Lining
Yes



PS255

Size/Finish
28/400

Emboss
No

Seal Type
Combination

Orifice Sizes
3 mm, 1.5 mm

Lining
No



PS256

Size/Finish
28/400

Emboss
No

Seal Type
Land

Orifice Sizes
3 mm, 1.5 mm

Lining
Yes



PS121

Size/Finish
28/410

Emboss
No

Seal Type
Land

Orifice Sizes
3 mm, 2.5 mm,
2 mm, 1 mm

Lining
No



PS134

Size/Finish
28/410

Emboss
No

Seal Type
Land

Orifice Sizes
3 mm x 6 mm,
3 mm x 4.5
mm, 3 mm,
2.5 mm, 2 mm,
1 mm

Lining
No



PS168

Size/Finish
28/410

Emboss
No

Seal Type
Valve

Orifice Sizes
3 mm, 2.5 mm,
2 mm, 1 mm

Lining
No



PS218

Size/Finish
28/410

Emboss
No

Seal Type
Combination

Orifice Sizes
3 mm, 2.5 mm,
2 mm, 1 mm

Lining
No



PS187

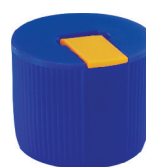
Size/Finish
28/410

Emboss
No

Seal Type
Valve

Orifice Sizes
3 mm x 6 mm,
3 mm x 4.5 mm,
3 mm, 2.5 mm,
2 mm, 1 mm

Lining
No



PS259

Size/Finish
28/410

Emboss
No

Seal Type
Liner

Orifice Sizes
3 mm x 6 mm,
3 mm x 4.5 mm,
3 mm, 2.5 mm,
2 mm, 1 mm

Lining
Yes



PS326

Size/Finish
28/410

Emboss
No

Seal Type
Land

Orifice Sizes
3 mm x 6 mm,
3 mm x 4.5 mm,
3 mm, 2.5 mm,
2 mm, 1 mm

Lining
Yes



PS352

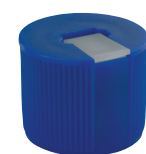
Size/Finish
28/410

Emboss
No

Seal Type
Arc

Orifice Sizes
3 mm x 6 mm,
3 mm x 4.5 mm,
3 mm, 2.5 mm,
2 mm, 1 mm

Lining
Yes



PS398

Size/Finish
28/410

Emboss
No

Seal Type
Plug

Orifice Sizes
3 mm x 6 mm,
3 mm x 4.5 mm,
3 mm, 2.5 mm,
2 mm, 1 mm

Lining
No

Spouted 24 mm



PS110

Size/Finish 24/410
Emboss No
Seal Type Combination
Orifice Sizes 3 mm, 2.5 mm, 1 mm
Lining No



PS146

Size/Finish 24/410
Emboss No
Seal Type Land
Orifice Sizes 3 mm, 2.5 mm, 1 mm
Lining No



PS147

Size/Finish 24/410
Emboss No
Seal Type Valve
Orifice Sizes 3 mm, 2.5 mm, 1 mm
Lining No



PS258

Size/Finish 24/410
Emboss No
Seal Type Land
Orifice Sizes 3 mm x 6 mm, 3 mm x 4.5 mm, 3 mm, 2.5 mm, 2 mm, 1 mm
Lining Yes



PS202

Size/Finish 24/410
Emboss No
Seal Type Land
Orifice Sizes 4 mm, 3 mm, 2.5 mm, 2 mm, 1 mm, 4 Hole Spray
Lining Yes

Spouted 20 mm



PS115

Size/Finish 20/410
Emboss No
Seal Type Land
Orifice Sizes 3 mm, 2.5 mm, 2 mm, 1 mm
Lining No



PS149

Size/Finish 20/410
Emboss No
Seal Type Valve
Orifice Sizes 3 mm, 2.5 mm, 2 mm, 1 mm
Lining No



PS249

Size/Finish 20/410
Emboss No
Seal Type Valve
Orifice Sizes 3 mm, 2.5 mm, 2 mm, 1 mm
Lining No

Polycam Smooth Walled



PS356

Size/Finish 24/410	Emboss No
Seal Type Arc	Orifice Sizes 6 mm, 4.75 mm, 3 mm, 1.5 mm
Lining Yes	



PS357

Size/Finish 24/415	Emboss No
Seal Type Arc	Orifice Sizes 6 mm, 4.75 mm, 3 mm, 1.5 mm
Lining No	



PS370

Size/Finish 28/410	Emboss Yes
Seal Type Arc	Orifice Sizes 6 mm, 4.75 mm, 3 mm, 1.5 mm
Lining Yes	



PS371

Size/Finish 28/415	Emboss Yes
Seal Type Arc	Orifice Sizes 6 mm, 4.75 mm, 3 mm, 1.5 mm
Lining No	



PS433

Size/Finish 28/410	Emboss Yes
Seal Type Arc	Orifice Sizes 6 mm, 4.75 mm, 3 mm, 1.5 mm
Lining Yes	

Polycam Inverted



PS408

Size/Finish 33/400	Emboss No
Seal Type Arc	Orifice Sizes 4 mm Enhanced Flow Dispense
Lining Yes	



PS412

Size/Finish 33/400	Emboss No
Seal Type Liner	Orifice Sizes 6 mm Baffled Flow Dispense
Lining Yes	



PS413

Size/Finish 33/400	Emboss No
Seal Type Liner	Orifice Sizes 4.75 mm x 19 mm Ribbon
Lining Yes	



PS407

Size/Finish 38/400	Emboss No
Seal Type Arc	Orifice Sizes 4 mm Enhanced Flow Dispense
Lining Yes	



PS409

Size/Finish 38/400	Emboss No
Seal Type Arc	Orifice Sizes 9.5 mm Flow Through Dispense
Lining Yes	



PS410

Size/Finish 38/400	Emboss No
Seal Type Arc	Orifice Sizes 6 mm Baffled Flow Dispense
Lining Yes	



PS414

Size/Finish 38/400	Emboss No
Seal Type Liner	Orifice Sizes 4.75 mm x 19 mm Ribbon
Lining Yes	



PS420

Size/Finish 38/400	Emboss No
Seal Type Liner	Orifice Sizes 18.5 mm Flow Through Dispense
Lining Yes	

Polycam Serrated/Food Closures



PS416

Size/Finish
38/400

Emboss
Yes

Seal Type
Arc

Orifice Sizes
7.6 mm Baffled
Flow Dispense

Lining
Yes



PS423

Size/Finish
38/400

Emboss
Yes

Seal Type
Liner

Orifice Sizes
Teardrop
w/ Pour Lip

Lining
Yes



PS368

Size/Finish
38/400

Emboss
Yes

Seal Type
Liner

Orifice Sizes
12.7 mm, 9.5 mm,
6 mm, 4 mm

Lining
Yes



PS381

Size/Finish
38/400

Emboss
Yes

Seal Type
Arc

Orifice Sizes
5 mm x 24.5 mm
Ribbon

Lining
Yes



PS385

Size/Finish
38/400

Emboss
Yes

Seal Type
Liner

Orifice Sizes
5 mm x 24.5 mm
Ribbon

Lining
Yes



PS386

Size/Finish
38/400

Emboss
Yes

Seal Type
Arc

Orifice Sizes
9.5 mm, 6 mm

Lining
Yes



PS354

Size/Finish
33/400

Emboss
No

Seal Type
Liner

Orifice Sizes
6 mm, 3 mm

Lining
Yes



PS439

Size/Finish
38/400

Emboss
Yes

Seal Type
Liner

Orifice Sizes
7.6 mm Baffled
Flow Dispense

Lining
Yes



PS405

Size/Finish
33/400

Emboss
No

Seal Type
Flexible Arc

Orifice Sizes
6 mm Keyhole

Lining
Yes

Tube Closures



PS391

Size/Finish
1.375" M8

Seal Type
"V"

Lining
Yes

Emboss
Yes

Orifice Sizes
6 mm, 4.75 mm,
3 mm, 1.5 mm



PS441

Size/Finish
1.375" M8 Matte

Seal Type
"V"

Lining
Yes

Emboss
Yes

Orifice Sizes
6 mm, 4.75 mm,
3 mm, 1.5 mm



PS369

Size/Finish
2" Oval

Seal Type
Plug

Lining
No

Emboss
No

Orifice Sizes
5 mm



PS418

Size/Finish
1.5" 22/400

Seal Type
"V"

Lining
Yes

Emboss
Yes

Orifice Sizes
9.5 mm, 6 mm,
4.75 mm, 3 mm



PS442

Size/Finish
1.5" 22/400
Matte

Seal Type
"V"

Lining
Yes

Emboss
No

Orifice Sizes
9.5 mm, 6 mm,
4.75 mm, 3 mm



PS392

Size/Finish
2" 22/400

Seal Type
Plug

Lining
No

Emboss
Yes

Orifice Sizes
6 mm,
4.75 mm,
3 mm



PS419

Size/Finish
2" 22/400

Seal Type
"V"

Lining
Yes

Emboss
Yes

Orifice Sizes
9.5 mm, 6 mm,
4.75 mm, 3 mm,
1.5 mm



PS406

Size/Finish
2" 22/400

Seal Type
"V"

Lining
Yes

Emboss
No

Orifice Sizes
9.5 mm,
6 mm,
4.75 mm,
3 mm



PS415

Size/Finish
2" 22/400

Seal Type
"V"

Lining
Yes

Emboss
Yes

Orifice Sizes
9.5 mm, 6 mm,
4.75 mm, 3 mm



PS425

Size/Finish
2" 22/400 Matte

Seal Type
"V"

Lining
Yes

Emboss
Yes

Orifice Sizes
9.5 mm, 6 mm,
4.75 mm, 3 mm



PS444

Size/Finish
1.5" 22/400
Matte

Seal Type
"V"

Lining
Yes

Emboss
Yes

Orifice Sizes
9.5 mm,
6 mm,
4.75 mm,
3 mm



PS445

Size/Finish
1.5" 22/400

Seal Type
"V"

Lining
Yes

Emboss
Yes

Orifice Sizes
9.5 mm, 6 mm,
4.75 mm, 3 mm

Unique/Double Walled



PS424

Size/Finish
Pouch Fitment

Emboss
No

Seal Type
N/A

Orifice Sizes
6 mm

Lining
Yes



PS429

Size/Finish
Pouch Fitment

Emboss
No

Seal Type
N/A

Orifice Sizes
8.6 mm

Lining
Yes



PS430

Size/Finish
Pouch Fitment

Emboss
No

Seal Type
N/A

Orifice Sizes
4 mm x 8.6 mm
Ribbon

Lining
Yes



PS436

Size/Finish
43 mm SpH

Emboss
Yes

Seal Type
Plug

Orifice Sizes
19.5 mm

Lining
No



PS426

Size/Finish
38 mm SpH CR
(Ratchet)

Lining
Yes

Emboss
No

Seal Type
Liner



PS428

Size/Finish
38 mm SpH CR
(Non-Ratchet)

Lining
Yes

Emboss
No

Seal Type
Liner

Friction Fit & Child-Resistant/ Applicator Caps



PS417

Size/Finish 33/400	Emboss No
Seal Type Valve	Orifice Sizes 3.8 mm
Lining No	



PS211

Size/Finish 28/410 CR	Emboss No
Seal Type Valve	Orifice Sizes 2 mm x 2 mm, 4 mm, 3 mm, 2 mm
Lining No	

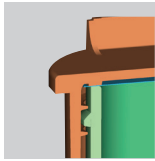


PS186

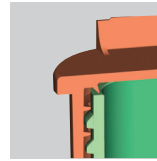
Size/Finish 5/8" FF, CR	Emboss No
Seal Type Valve	Orifice Sizes 0.8 mm
Lining No	

CR caps may be included in child-resistant applications when appropriately tested and certified using your completed package.

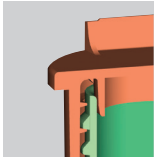
Seal Types



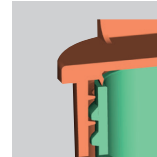
Flat/Liner Seal



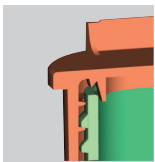
Arc Seal



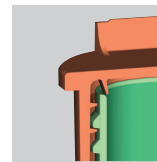
Plug Seal



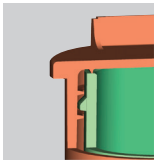
Land Seal



Combination Land
and Valve Seal

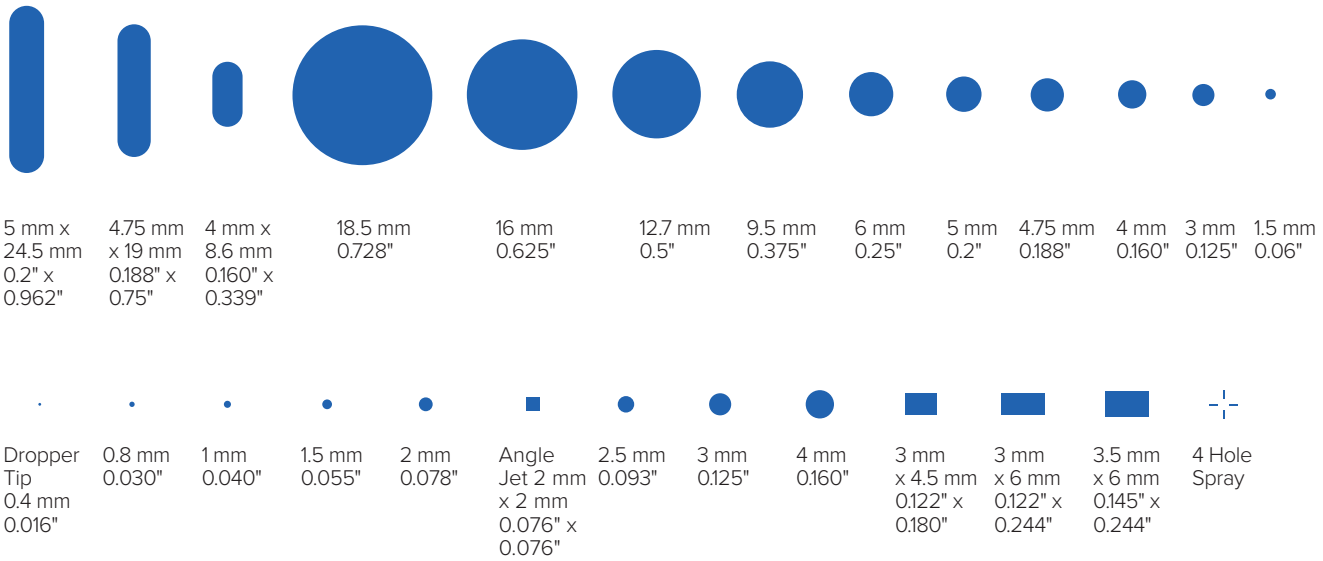


Valve Seal



"V" Seal

Orifice Sizes



We remain your leading supplier for one-stop, in-house color capabilities. We proudly offer onsite color matching, formulation and compounding, resulting in low colorant costs and the quickest turnaround for colorant in the industry.



Elevating the experience worldwide

From Kansas to Barcelona, Mexico to Shanghai, our responsive global network provides the agility you need to get your products to market—swiftly, securely and efficiently.

silgandispensing.com/our-locations