



**GEORG MENSHEN GMBH & CO. KG**  
Industriestraße 26  
57413 Finnentrop  
Germany  
Telefon +49 2721 518-0  
Telefax +49 2721 518-198  
E-Mail [contact@menshen.com](mailto:contact@menshen.com)

[www.menshen.com](http://www.menshen.com)



**MENSHEN**  
WELD SPOUTS



## WHY CHOOSE WELD SPOUTS & CAPS FROM MENSHEN?

- **Global availability**

We have 11 production locations in Europe, Asia, USA and Latin America, that follow the exact production and quality standards Menshen is known for.

- **Wide range**

Our closures supply a wide range of markets: food, beverage, industrial packaging and home & personal care applications

- **Innovation**

For over 50 years, our solutions have been setting the course for the entire packaging industry. Our new generation of closure designs is one more contribution towards a more sustainable world.



- **Top quality**

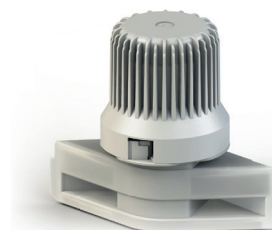
Menshen is synonymous for high quality products, as proofed by important certifications such as BRCGS standard for primary food packaging. We also guarantee modern and safe production via ISO standards 9001:2015 and 14001:2015.

- **Global network and partners**

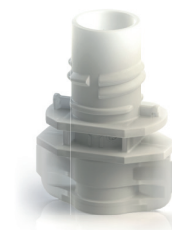
Whether you are looking for a packaging supplier, spout inserting or filling machines, we can advise and connect you with our partners, who will meet your requirements in the best way.

## A NEW GENERATION OF CLOSURE DESIGNS FOR THE CIRCULARECONOMY

- Designed for use with monomaterials
- No additives in the spout
- Cost and energy efficient
- Improved sealing quality
- Polyethylene & Polypropylene compatible



- MENSHEN-LoTUS™ for food, beverages, industrial applications, home & personal care



- MENSHEN-LoTUS™ for fruit purees, baby food

**We are delighted about your interest in what we are doing.**

**The MENSHEN team**



## WHY CHOOSE WELDPOUTS & CAPS FROM MENSHEN?



- Global availability**  
 We have 11 production locations in Europe, Asia, USA and Latin America, that follow the exact production and quality standards Menshen is known for.
- Wide range**  
 Our closures supply a wide range of markets: food, beverage, industrial packaging and home & personal care applications
- Innovation**  
 For over 50 years, our solutions have been setting the course for the entire packaging industry. Our new generation of closure designs is one more contribution towards a more
- Top quality**  
 Menshen is synonymous for high quality products, as proofed by important certifications such as BRCGS standard for primary food packaging. We also guarantee modern and safe production via ISO standards 9001:2015 and 14001:2015.
- Global network and partners**  
 Whether you are looking for a packaging supplier, spout inserting or filling machines, we can advise and connect you with our partners, who will meet your requirements in the best way.

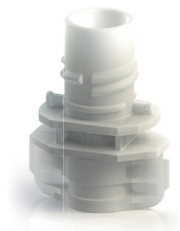


## A NEW GENERATION OF CLOSURE DESIGNS FOR THE CIRCULARECONOMY

- Designed for use with monomaterials
- No additives in the spout
- Cost and energy efficient
- Improved sealing quality
- Polyethylene & Polypropylene compatible



- MENSHEN-LoTUS™ for food, beverages, industrial applications, home & personal care



- MENSHEN-LoTUS™ for fruit purees, baby food

We are delighted about your interest in what we are doing.

The MENSHEN team