



NF BEAUTY GROUP

2023 CATALOG

WHO WE ARE

NF Beauty Group strives to meet the demands of sustainability and innovation in the global beauty and personal care market. We are a leader providing a large scope of packaging, full service, and branding to deliver unlimited value and competitive products. With our diverse offerings, our clients can enjoy trend forward developments and relevant designs. Our clients trust us to be an international and modern packaging pioneer.

SPECIALIZED SERVICES

- Customer Driven Business Development Team
- Factory and Vendor Liason
- Overseas Partnership
- Custom Tooling Capabilities
- Logistics
- Safety Stock
- Full Service
- Sustainable , Eco-Friendly Packaging

WHAT WE DO

R+D.

With our own in-house engineers and designers, our Research and Development department utilizes the latest technology and thorough analysis of market trends to create an extensive range of unrivaled packaging that is not only innovative and user-friendly, but also aesthetically pleasing.

FULL SERVICE.

Encompassing everything from formulation to secondary packaging, our full service team provides a comprehensive solution for your brand's needs, all of which can be customized. With uniquely tailored formulations as well as readily available stock formulas to choose from, our team is dedicated to offering well advised consultations followed by exclusive and effective ingredient concoctions that are fit for your product.

STOCK PACKAGING.

For all your essential component needs, our team of experts will assist in providing the ideal packaging with exceptional customer service. Not only do we offer thousands of stock components from various countries — Korea, Taiwan, China and India — we also present these components with low minimums, fast lead-times, competitive pricing and in-house QC to surpass client expectations.

MAJOR MARKETS

- Prestige and Mass Markets
- Skincare
- Personal Care
- Color Cosmetics
- Fragrance
- Hair Care
- Body Care
- Pharmaceutical

OUR CLIENTS

BIOSSANCE™

Murad.

HONEST
BEAUTY®

VERSED

shu uemura

Too Faced

SUNDAY
RILEY

HOURGLASS

FENTY SKIN
BY RIHANNA

 T A T C H A.

dermalogica
professional-grade skin care by The International Dermal Institute

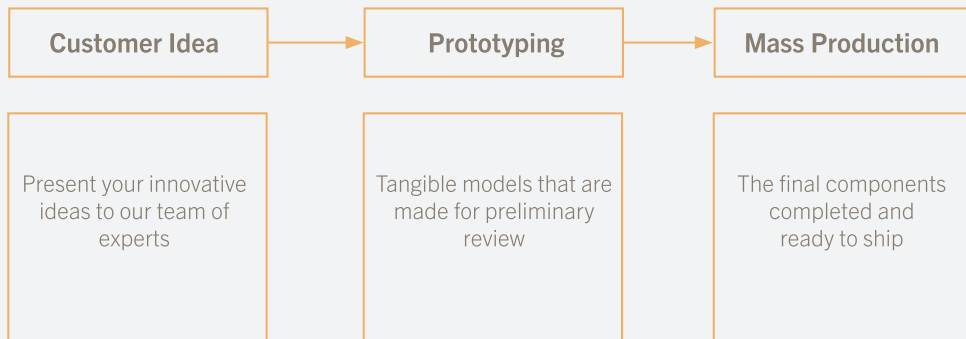
BEAUTYCOUNTER

L'ORÉAL

Guthy | Renker

P&G

DEVELOPMENT PROCESS



NFBG IS DEDICATED TO

SUSTAINABLE

We source from, and partner with, vendors that are making conscious efforts to reduce our carbon footprint by manufacturing and assembling parts within the same country as much as possible. Including primary, secondary components and raw materials.

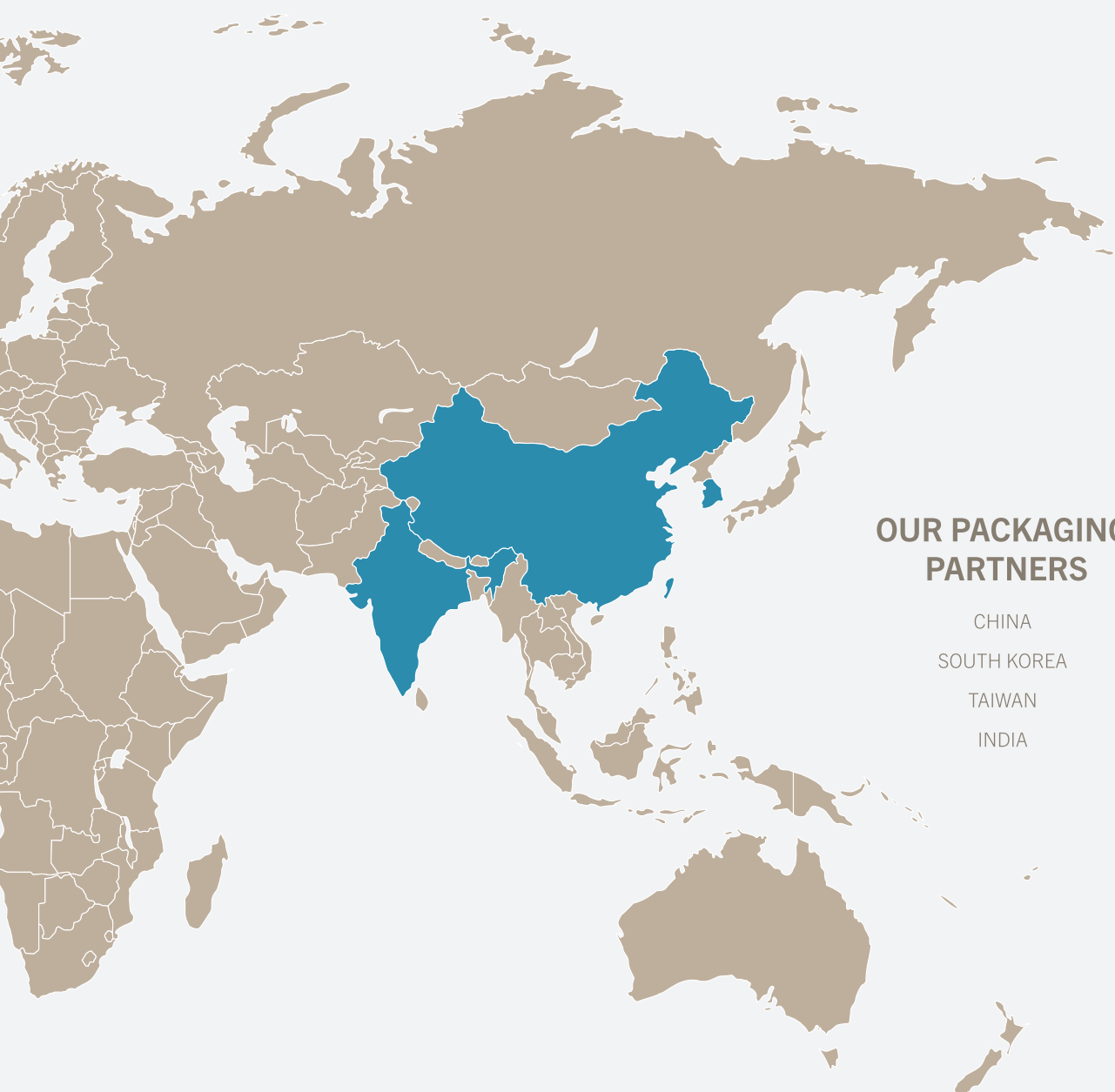
CRUELTY FREE AND VEGAN

Our turnkey developments with fillers and labs feature cruelty free and vegan formulations. Our formulation manufacturers can provide documentation regarding our chemical content.

CLEAN

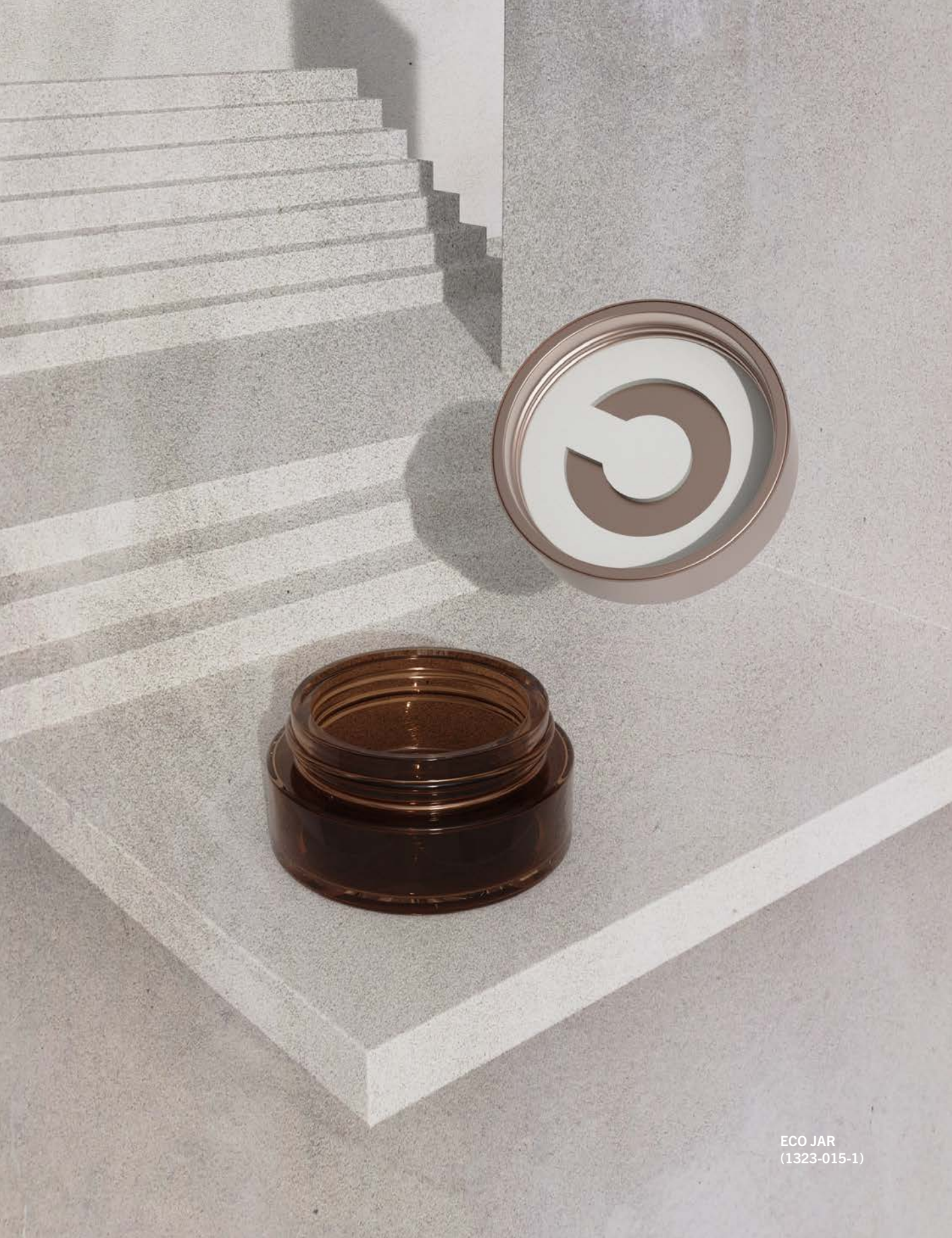
Our partners create formulations that are clean and compliant with leading industry blacklists, exploring and formulating with biodegradable ingredients especially in cleaners and washable products.





OUR PACKAGING PARTNERS

- CHINA
- SOUTH KOREA
- TAIWAN
- INDIA



ECO JAR
(1323-015-1)

CONTENT

New Featured	...10
Bottles	...23
Droppers + Ampoules	...49
Jars	...57
Sticks	...69
Tubes + Tottles	...79
Color + Cosmetics	...85
Turnkey + Full Service	...104

NEW FEATURED

NEW FEATURED

FEATURED PACKAGING

NFBG develops and sources new products every year. Showcasing the latest trends gives us the advantage of being early in the market displaying new products to our clients.



ALL-OUT
BOTTLE
(J6 T004)

AL TUBE

HELIX JAR
(1323-015-1)

AMMO STICK
(F2 ZZ311)

AMBIT TOTTLE



FEATURES

Slim, Sleek Design

Racetrack Design

PCR availability

Ambit Tottle is designed with a racetrack configuration and elongated side press disc cap. This unique shape allows for maximum usage of store display space and minimizes vanity space for users. The flexible body is easy to squeeze product out, while fitting perfectly in the palm of your hands.

SIZES

30mL J5 T001

50mL J5 T002

ALL-OUT BOTTLE



FEATURES

Refillable

PP Inner Bottle

Glass Outer Bottle

The All-Out Bottle is an airless pack with a sustainable twist. The outer bottle made of glass offers a keepsake bottle with various deco opportunities and luxurious tactility. The inner PP bottle allows for compatibility to a wide range of products.

SIZES

15mL J6 T004-1

30mL J6 T004

50mL J6 T004-2

ALL-OUT JAR



FEATURES

Refillable

PP Inner Jar

Glass Outer Jar

The All-Out Jar is a luxurious answer to a standard plastic refillable jar. The infinitely recyclable outer glass jar carries the weight and cool-to-the-touch feel that comes with the material, while providing a story of longevity. The inner PP Jar provides maximum compatibility to various formulas with the added bonus of being fully recyclable.

SIZES

30g J6 T008

50g J6 T009

ALL-OUT AIRLESS JAR



FEATURES

Refillable

PP Inner Jar

Glass Outer Jar

The All-Out Airless Jar is an airless pack with a sustainable twist. The outer bottle made of glass offers a keepsake bottle with various deco opportunities and luxurious tactility. The inner PP bottle allows for compatibility to a wide range of products.

SIZES

30g J6 T012

50g J6 T013

TUBE STICK



FEATURES

Larger Decoration Opportunities

Customizable Closure Options

PU Material Available

By combining a traditional tube and stick, Tube Stick allows for various decoration opportunities. With the option to offset print on the larger overcap, Tube Stick offers a cost effective solution to decorate with unlimited number of colors.

SIZES

Various Sizes/Configurations Available

ECO-JAR



FEATURES

All Aluminum Double Wall Cap

Easy to Remove Liner

Recyclable

Eco-Jar combines our Easy Peel Liner, an easy to remove patented liner, with a fully recyclable double aluminum cap and glass jar.

SIZES

30g

50g

BARE PUMP



FEATURES

Maximize Design Options

Paper Outer Bottle

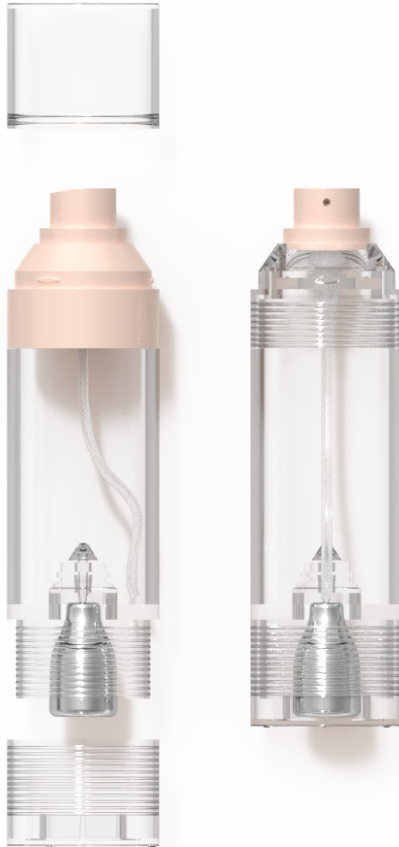
Recyclable

Paper Pump combines an outer paper canister with a flexible pouch that acts as the inner bottle. The minimal use of plastic offers the perfect pack out for a sustainable story.

SIZES

Various Sizes Available

VEGA O2 MISTER



FEATURES

Oxygen Compressed Air Cartridge

Easy Filling Method

Designed with compressed air technology, the Vega O2 Mister offers a continuous 360 degree spray, similar to traditional aerosol pumps. The twist base gives users an interactive activation process that releases the O2 (oxygen) to mix with the formulation, combining both innovative technology and formulation.

SIZE

50 mL Z9002-050

LUMINA JAR



FEATURES

Refillable

Recyclable

Luxe, Cool to Touch

Aluminum Outer Jar

The Helix AL Jar minimizes the use of plastic that is seen in traditional jars. By combining an aluminum outer jar with a refillable PP inner jar Helix AL JJar offers a luxe pack out, while being sustainable and recyclable.

SIZES

80g

F9 ZZ035

AL TUBE



FEATURES

Various Closure Shapes Available

Recyclable

Premium Feel

Squeezer Key Available

AL Tubes minimizes the use of plastic that is seen in traditional tubes. The malleable aluminum offer a premium feel with its natural weight and cold to touch feature. Perfect for variety of products, ranging from masks to toothpaste and more!

SIZES

Various Sizes Available



CELESTE PUMP BOOST PUMP
(A3014-030R) (F3 R179)

BOTTLES
BOTTLES

HELIX PUMP



FEATURES

Refillable

PP Inner Bottle

Locking Pump

TPE Pump Option Available

Helix Pump offers an alternative to single use airless pumps. The outer holster makes it ideal for keepsake artwork or limited edition designs. The twist base feature reveals the pump, making it great for travel, as the pump hides away in a locked state when not in use.

SIZES

30mL F3 AE244

50mL F3 AE245

TONER BOTTLES



FEATURES

Reducer Flow-Through

Flush and Non-Flush Cap Configuration

Toner are an essential part of every day skincare. Our Toner Bottles are offered at various different size options, along with different orifices and closures. Our Toner Bottles also come in rigid or flexible bottles, making it the perfect solution to both thin or thick formulations.

SIZES

Various Sizes/Configurations Available

50mL F2 0012T

DISC-CAP BOTTLES



FEATURES

Disc Cap

Large Capacities

Squeezable Bottle Materials

Our Disc Cap Bottles are our larger bottles, perfect for body and hair products that require a bigger size capacity. The disc cap offers users an easy to access solution with a one hand, one touch opening system.

SIZES

Various Sizes/Configurations Available

CELESTE PUMP



FEATURES

Recyclable

Metal-free TPE Pump

Mono-material

The Celeste Pump is one of three components in our Celeste Line that offers a complete, a package with a unique dispensing story that is embedded with the material of the metal-free pump. With its TPE spring, our pump presents an efficient design alongside an element of sustainability.

SIZES

15mL J3 T2006-1
30mL J3 T2006-2
50mL J3 T2006-3

PURITY PUMPS



FEATURES

Recyclable

Metal-free TPE Pump

Airless Engine

The Purity Pump brings brands to the future of eco with efficient mono-material construction and airless engineering. Purity's unique design and actuation gives full presence to recyclability.

SIZES

30mL	A3013-030A	30mL	A3014-030R (refillable)
50mL	A3013-050A	50mL	A3014-050R (refillable)
30mL	A3014-030	30mL	A3015-030R (refillable)
50mL	A3014-050	50mL	A3015-050R (refillable)

ESTELLA PUMP



FEATURES

Recyclable

Metal-free TPE Pump

Mono-material

Refillable

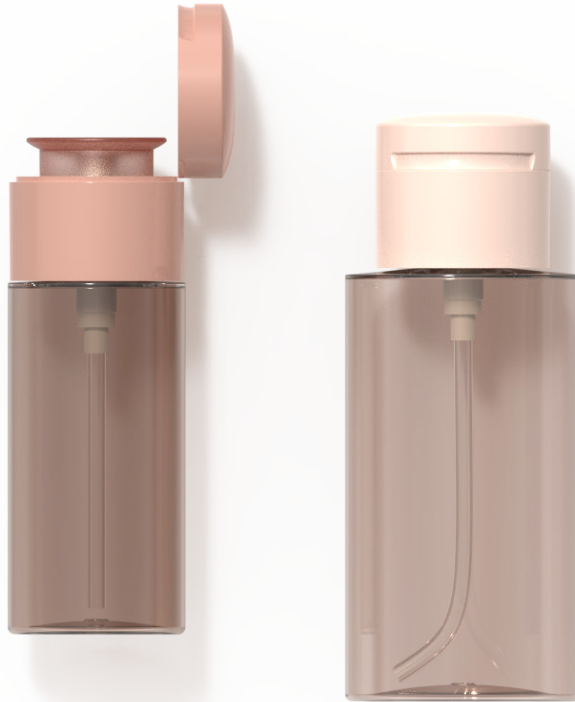
The Estella Pump combines the future of eco with efficient monomaterial pump with a refillable and reusable keepsake bottle.

SIZES

30mL A3015-030R

50mL A3015-050R

WELL PUMPS



FEATURES

Built-In Catch Well

Larger Capacities

Locking Cap

Our push down to dispense Well Pumps offer users an easy dispensing system, where product flows and collects at the well for use. Great for liquid formulations that require the use of cotton pads or cotton swabs, like toners, acetone, and more.

SIZES

120mL F3 ZZ112

200mL F3 ZZ113

300mL F3 ZZ114

400mL F3 ZZ115

FOAM PUMPS



FEATURES

Larger Capacities

Cost-Effective

Different Pump Styles Available

Foam Pumps offer a fun and unique dispensing system where a liquid content is transformed into foam when dispensed. Foam Pumps require less formulation since the liquid expands to foam, allowing brands to save more on formulation, packaging, and transportation.

SIZES

Various Sizes/Configurations Available

CHILL PILLS



FEATURES

Various Closure Options

Lightweight

The fun, eye-catching Chill Pills provide a unique cylindrical shape, with various different closure options to create either a pump, toner bottle, or more! The oblong 50/50 cap and bottle proportions stand out against traditional pumps.

SIZES

Various Sizes/Configurations Available

40mL F3 ZZ337

60mL F3 ZZ338

120mL F3 ZZ338-1

BOOST PUMP



FEATURES

Refillable

PP Inner Bottle

Locking Pump

Boost Pump offers an alternative to single use airless pumps. The outer holster makes it ideal for keepsake artwork or limited edition designs. The click base feature reveals the pump, making it great for travel, as the pump hides away in a locked state when not in use.

SIZES

30mL F3 R179

FRENCHIE PUMP



FEATURES

Self Cleansing Nozzle Design

Reduce Clogging

Available in Two Cap Options : Flat and Rounded

The Frenchie Pump is an airless pack with cleanliness at its core. The unique design features a self cleaning nozzle that prevents build up and reduces waste.

SIZES

30mL H3004-030A

35mL H3004-035A

40mL H3004-040A

45mL H3004-045A

50mL H3004-050A

30mL H3004-030

35mL H3004-035

40mL H3004-040

45mL H3004-045

50mL H3004-050

FLAMINGO BOTTLE



FEATURES

Stationary Nozzle Design

Precise Dispensing Application

Customizable Actuator

The Flamingo Bottle features a button actuator that moves independently from the nozzle. This airless pack is great for a multitude of formulations and provides opportunities for direct application as well as precise dispensing.

SIZES

30mL H3006-030

35mL H3006-035

40mL H3006-040

45mL H3006-045

50mL H3006-050

SPACE PUMP



FEATURES

Oval Bottle and Piston

Minimal Shelf Space

Ergonomic Shape

Stay trendy with our oval shaped pump! The ergonomic shape fits well into the hand, and provides maximum space for branding and ingredient lists. Maximize shelf space, and be visible with the Space pump.

SIZES

50mL F3 L155
80mL F3 L155-1
100mL F3 L155-2
120mL F3 L155-3

PRISM PUMPS



FEATURES

Available in Glass or Plastic

Available in Square or Cylindrical Profiles

Refillable

The Prism Pumps are refillable components featuring thick wall outer bottles, both in rectangular and cylindrical profiles. The inner bottle uses tube glass to house the airless piston, making for smooth mechanical movement and diverse compatibility.

SIZES

Various Sizes Available

CLARITY PUMP



FEATURES

Refillable

Refillable Jars Available in Same Family

The cylindrical shape of the Clarity Pump presents a simple and minimal approach to clean packaging. The airless technology, combined with the refillable mechanism, provides a more sustainable alternative to a traditional pump.

SIZES

20mL F3 N132
30mL F3 N133
50mL F3 N134

NIMBUS MISTER



FEATURES

Blow-Molded

PET

Diptube Engine

Fine Mist Spray

The Nimbus Mister offers a heavenly application and experience. Fine mist is actuated creating an even refreshing coat to the skin. Prime and glow with this simple and modern pack.

SIZES

60mL	F3 R135-1H1S
80mL	F3 R135H1-1S
100mL	F3 R135H1
120mL	F3 R136H1

CALISTA SERIES



FEATURES

Recyclable

Metal Free Mixed TPE PP Pump

Mono-material

Refillable Options Available

The Calista Series brings mono-material construction and airless engineering to our basic EL pumps. The modern, capless design allows for ease of application. Also offered as a refillable pack, this version combines a mono-material pump engine and refillable system with a modern, capless design.

SIZES

30mL A3014-030

50mL A3014-050

30mL A3014-030R(refillable)

50mL A3014-050R(refillable)

BASIC EL LINE



FEATURES

Single Wall and Double Wall Options

Capless Actuator

Available in Various Diameters

The Basic EL Line Pump presents an efficient and simple design. The modern design of the capless pump allows for not only beautiful shelf aesthetic, but ease of application.

SIZES

30mL	D3012-030
50mL	D3012-050
100mL	D3012-100
120mL	D3012-120
150mL	D3012-150

BASIC LINE



FEATURES

Single Wall and Double Wall Options

Available in Various Diameters

The Basic Line fulfills all your needs for airless bottle function. Compatible with various formulas, this airless component is great for skincare stories and color cosmetics.

SIZES

15mL D3003-015
30mL D3003-030
50mL D3003-050

POCKET PUMP



FEATURES

Travel Friendly

Monomaterial Options Available

Available in Various Diameters

The Pocket pump is a mini pack. This airless component is a great size for travel sets and samples and would benefit any brand looking to promote their products in sample and tester packs.

SIZES

Various Sizes Available

JR.LINE



FEATURES

Travel Friendly

Available in Dropper and Pump Options

Injection Glass Bottle

This small but mighty pump line is perfect for traveling or for sampling. The Jr. Line has a sustainable story that incorporates recyclable materials without compromising luxury. House serums, essence, lotions, and creams in the convenience of a mini glass pump.

SIZES

PUMP

3mL F3 AP003
5mL F3 AP003-1
10mL F3 AP003-2

DROPPER

3mL F7 AP002
5mL F7 AP002-1
10mL F7 AP002-2

GHOST BOTTLE



FEATURES

Refillable Cartridge

Airless Engine

Reduction of Plastic

The cylindrical shape of the Ghost Bottle presents a simple and minimal approach to clean packaging. The airless technology, combined with the refillable mechanism provides a more sustainable alternative to the traditional pump. The baseless feature also helps to reduce the total use of plastic.

SIZES

80mL Z3029-080R

FRAME POUCH



FEATURES

Refillable

Larger Capacities Available

Minimal Use of Plastic

Frame Pouch is the perfect answer to reducing plastic for larger size capacities. Because the frame has a hollowed out front and back, overall plastic is decreased, and the refillable pouch is easily replaceable when finished.

SIZES

Various Sizes Available

300mL F3 ZZ462 (pictured)

POWDER BOTTLES



FEATURES

Twist Lock Actuator

Two Dispensing Pattern Options

The Powder Bottles offer a single wall bottle dispenser for powder formulations such as cleansers and dry products. With two different dispensing options, you can have more control in the amount of product dispensed.

SIZES

80mL F2 L002 (circular)
135mL F2 L003 (circular)
180mL F2 L004 (circular)
80mL F2 L002B (slotted)
135mL F2 L003B (slotted)
180mL F2 L004B (slotted)



RADIANCE
DROPPER

DROPPERS + **AMPOULES**

CELESTE DROPPER



FEATURES

Recyclable

Metal Free TPE Pump

Monomaterial

Our mono-material Celeste Dropper offers a springless, engineless pump technology, perfect for dispensing medium to high viscosity formulas. With just four parts, Celeste Dropper is easy to recycle, optimizing convenience and simplicity.

SIZES

15mL E3002-015

30mL E3002-030

50mL E3002-050

15mL E3003-015 (cap)

30mL E3003-030 (cap)

50mL E3003-050 (cap)

BASIC DROPPERS



FEATURES

Various Bulb Options: Silicone, NBR, TPR, etc.

Glass or Plastic Pipette Options

Glass or Plastic Bottle Options

The Basic Dropper line offers options for various bottle shapes and sizes. The opportunity for various formulations and unique collections for clients is great.

SIZES

Various Sizes Available

20mL L7021-020

30mL L7021-030

RADIANCE DROPPER



FEATURES

Monomaterial

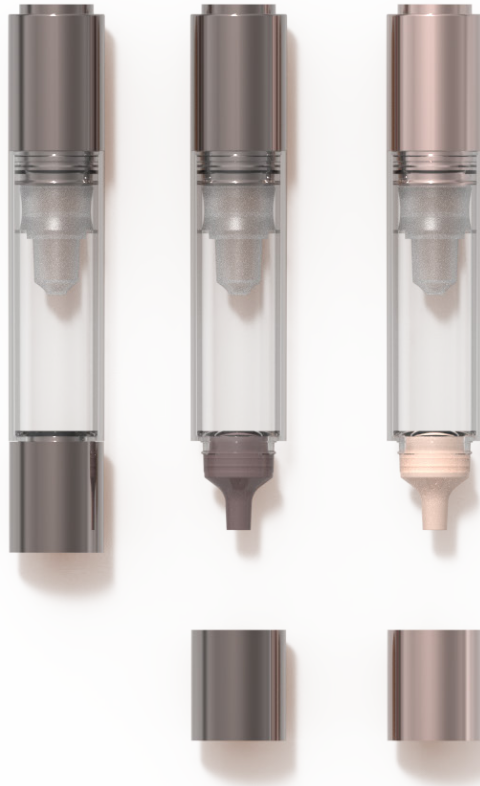
Recyclable

Radiance Dropper features a PP pipette, as well as fully mono-material collar, bulb, and bottle. This dropper is ideal for recyclability and compatibility with various formulas.

SIZES

Various Sizes Available

PILOT AMPOULE



FEATURES

Recyclable

Metal Free TPE Pump

Dropper Tip Allows Precise Application

Single Wall and Double Wall Options

The Pilot Ampoule offers direct and precise application. The TPE pump mechanism is great for thicker formulations and evacuating majority of the formula from the package, leaving barely any remaining residue behind. Perfect for spot treatments and lip masks, you can never go wrong.

SIZES

5mL E3001-005
15mL E3001-015
30mL E3001-030
50mL E3001-050

DROPPER AL SHELL



FEATURES

High Quality Aluminum Overshell

Unique Decoration Opportunities

Thick Bottom Base

Dropper AL Shell is comprised of a glass bottle with an aluminum overshell enclosing majority of the body. The weight and shine from the aluminum overshell on the body of the dropper gives a more luxe feel and look, while also providing a unique way to decorate.

SIZES

20mL L7028-020

30mL L7028-030

40mL L7028-040

50mL L7028-050

HEAVY BASE DROPPER



FEATURES

Unique Shape Glass Bottle

Thick Bottom Base

Heavy Weight Provides Luxe Feel

Our Heavy Base Dropper offers a great luxe and weighted feel to the average glass bottle. With this heavy base, it makes the bottle very durable and modern. As a great pairing, we also offer a pump closure targeted to various formula needs!

SIZES

30mL M7040-030



ALL-OUT JAR
(J6 T008)

JARS
JARS

CELESTE JAR



FEATURES

Recyclable

Metal Free TPE Pump

Mono-material

Complete your sustainable moment with our Celeste Jar. It is one of three components in our Celeste Line that offers an airless, springless narrative with a unique dispensing technology story that is embedded with the material of the pump. With its TPE pump, our airless jar presents a metal-less alternative for serums, creams, lotions, and masks.

SIZES

Various Sizes Available

50g F3 L208

ENDLESS JAR



FEATURES

Recyclable

Mono-material PP

Refillable

Available in Larger Capacities

The Endless Jar is a refillable and monomaterial solution to large format jars for skincare and body care. Endless possibilities for your sustainable story.

SIZES

100g	F4 R072R
150g	F4 R073R
200g	F4 R074R

FLEX PUMP JAR



FEATURES

Recyclable

Unique Dispensing System

Mono-material PP

Flex Pump Jar is a sustainable, mono-material airless jar that features a unique pumping mechanism where a button actuator flexes near the opening of the jar. The airless pack is great for a multitude of formulations.

SIZES

30g F4 AE128

CALIBRE JAR



FEATURES

Artwork Alignment Capabilities

Slim

Low Profile

The Calibre Jar is a small glass jar with a shallow fill area. The cap has been designed to allow for artwork to be aligned when cap and jar are closed.

SIZES

10g J6 T006

TOWER JAR



FEATURES

Stackable, Slide Fit

Multiple Formulation Combinations

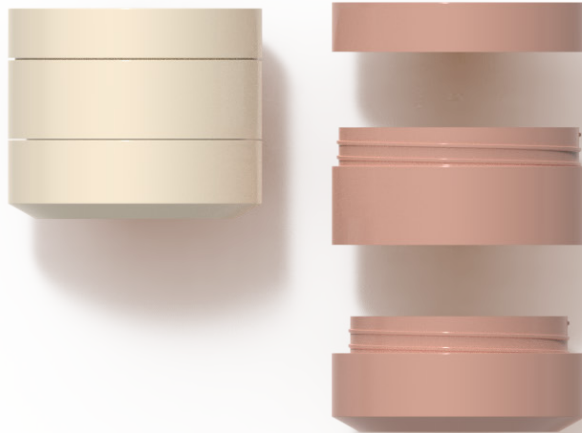
Travel Friendly

The Tower Jar offers a tiered orientation for regimented formulas. Designed with a recessed base, various sizes can be stacked by sliding together. The customization gives the Tower Jar endless configurations.

SIZES

3g+3g	NF-4001-3/3
5g+5g	NF-4001-5/5
10g+10g	NF-4001-10/10

STRATA JAR



FEATURES

Recyclable

Artwork Alignment Capability

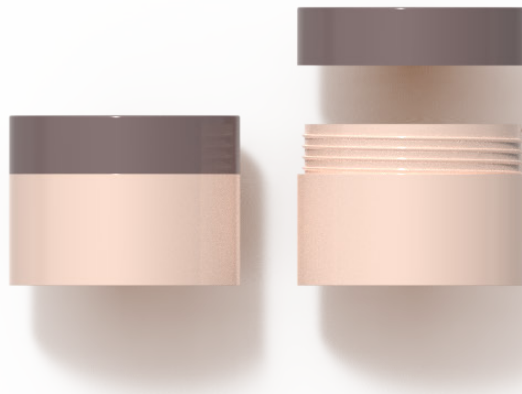
Mono-material PP

Strata Jar is a monomaterial stacking jar with a diverse compatibility and formulation story. Fully recyclable and simplified construction makes this pack a perfect solution for day and night or 2 step skincare regimens.

SIZES

25g + 25g Z4020-25/25

RECLAIM JAR



FEATURES

Customizable PCR Content

0-100% PCR

Minimal Packaging

Our upcycled Reclaim Jar is 100% PCR and is an outstanding sustainable alternative for many formulations such as creams, lotions, masks, and scrubs. The PCR content can be altered and reformulated to meet more robust compatibility options for any brand looking to push their sustainability story to the next level.

SIZES

Various Sizes Available

30g F4 ZZ099A

ORBIT JAR



FEATURES

Refillable

Built in Attached Inner Jar Closure

Prevents Cross-Contamination

Lock in your routine with our refillable Orbit Jar. The tight seal created by the inner jar lid ensures that formula is not exposed and provides an added layer of security against cross-contamination. Once finished, easily replace with refill unit.

SIZES

30g B4305-030

BASIC JARS



FEATURES

PP, PET, PETG Materials Available

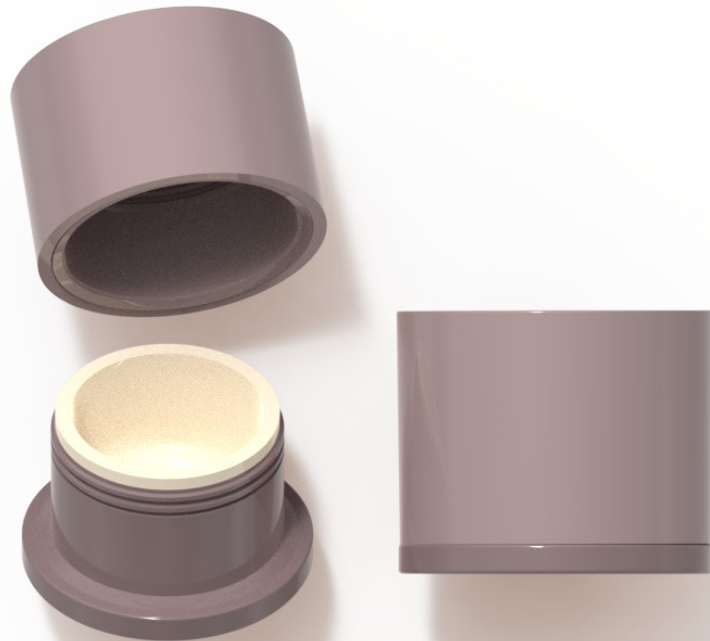
Flush Cap and Jar

Basic Jars come in a variety of different sizes, shapes, and materials. The various options allow for any brand to achieve a uniform appearance amongst different products.

SIZES

Various Sizes Available

UPSIDE DOWN JAR



FEATURES

Unique Proportions

Larger Cap Decoration Capabilities

Upside Down Jar gives the opportunity for prominent decoration due to the large surface area on the cap. The unique proportions between the cap and jar is what makes this item unique across all jars.

SIZES

30g	Z4045-030
50g	Z4045-050



AMMO STICK
(F2 ZZ311)

STICKS
STICKS

PAPER STICK



FEATURES

FSC Certified Paper Availability

Mono-material Paper

Available With White, Black, Craft Paper

The Paper Stick follows our sustainability initiatives, with options to incorporate FSC Certified paper sourcing for a more sustainable story. With 100% of all parts being paper made, the monomaterial Paper Stick is easily recyclable.

SIZES

Various Sizes Available

7g	F9 ZZ012-1
14g	F9 ZZ012-2
60g	F9 ZZ013
75g	F9 ZZ014

SELENE STICK



FEATURES

Mono-material PP

On-The-Go Application

Selene Stick is a simple and sustainable stick that provides for endless formulation options with its high compatibility rates. By utilizing only PP as the resin source, Selene Stick is easily recyclable.

SIZES

10g A2001-010

HELIX STICK



FEATURES

Refillable

Recyclable

Mono-material PET

Our refillable Helix Stick highlights a refillable inner cup with its clear and translucent material to help further emphasize the sustainable storyline. The monomaterial PET allows for easy recyclability, eliminating the need for any separation when done using.

SIZES

3.2g T1003-003
5g F1 ZZ303

DROPLET STICK



FEATURES

Ergonomic Droplet Shape

Propelling Mechanism

PCR Availability

The droplet shaped design of the Droplet Stick makes application quick and precise. The engineered design provides both top and bottom fill opportunities for any unique formulations.

SIZES

12g 1318-004

NOVA STICK



FEATURES

Refillable

Sustainable

Cool to the Touch

The aluminum construction of the Nova Stick makes an ideal component for luxe brands and those looking for a sustainable and recyclable story. Design for disassembly makes it easy to recycle and offers cool to the touch packaging.

SIZES

10g F1 ZZ327-5

AMMO STICK



FEATURES

Refillable

PP Inner Bottle

Our Ammo Stick is our response for an eco-friendly alternative stick component. With the durable outer case and easy to swap recyclable refill cartridges, our Ammo Stick creates a longer lasting circular lifetime.

SIZES

30g F2 ZZ311

50g F2 ZZ312

ALL-OUT 100 STICK



FEATURES

Little Formulation Waste

100% Propelling Mechanism

All Out 100 Stick solves the common issue of having excess product leftover towards the end of a stick. All Out 100 Stick allows for the piston to be fully pushed beyond the standard length so users can utilize as much formulation as possible with minimum waste.

SIZES

15g H2003-015



PAPER TUBE AMBIT TOTTLE
(J5 T001)

TUBES +

TOTTLES

SLIM TOTTLE



FEATURES

Slim, Sleek Design

Minimizes Storage Space

Slim Tottle offers sleek and minimal design without sacrificing function. Great fit for travel and storage with a small footprint.

SIZES

30mL F5012-030

50mL F5012-050

PAPER TUBE



FEATURES

FSC Certified Paper Availability

Various Closure Options: Screw Cap, Flip Cap, Pump

Available with White, Black, Craft Paper

The Paper Tube combines a paper outer layer and PE inner layer to provide a more sustainable option than compared to traditional tubes. The combination of paper and plastic helps to hold the integrity of its shape and function, while also reducing the total overall use of plastics.

SIZES

Various Sizes Available

LUMINOUS TOTTLE



FEATURES

Flexible and Soft-Textured Bottle

Precise Application

The Luminous Tottle is perfect for both on-the-go and full size products based on your desired formula. While the tip provides precise application, the bottle can be easily squeezezd for easy control. This is the ideal pack for any cream, serum, or SPF formulations.

SIZES

Various Sizes Available

REFILLABLE ROLLER



FEATURES

Refillable

Recyclable

Mono-material PP

Refillable Rollerball replaces traditional one-time use rollerballs currently out in the market with a double wall body feature with a keepsake outer bottle, creating a heavier luxe feel and reusable massage rollerball.

SIZES

50g F2 M016

70g F2 M017



TUBE STICK LINER PENS
(1323-015-1) (W1004-001)

COLOR +
COSMETICS

PURITY EYE PUMP



FEATURES

Recyclable

Metal Free TPE Pump

Monomaterial

Purity Eye Pump is a fully mono-material PP pump system that allows for precise application to delicate areas, such as eyes and smile lines.

SIZES

5mL	A1003-005
6mL	A1003-006
7mL	A1003-007
8mL	A1003-008
10mL	A1003-010
15mL	A1003-015

MONUMENT LINE



FEATURES

Various Closure Options:

- Pump
- Dropper
- Doefoot Applicator

Glass Construction

Heavy Base

Monument Line features a glass bottle with various options for application: Pump, Doefoot Applicator, and Dropper. Glass bottle allow for Monument to be recyclable and reuseable.

SIZES

30mL J6 T011

ENDLESS COMPACT



FEATURES

Multiple Formulation Combinations

Back-Push Refillable Pans

Travel Friendly

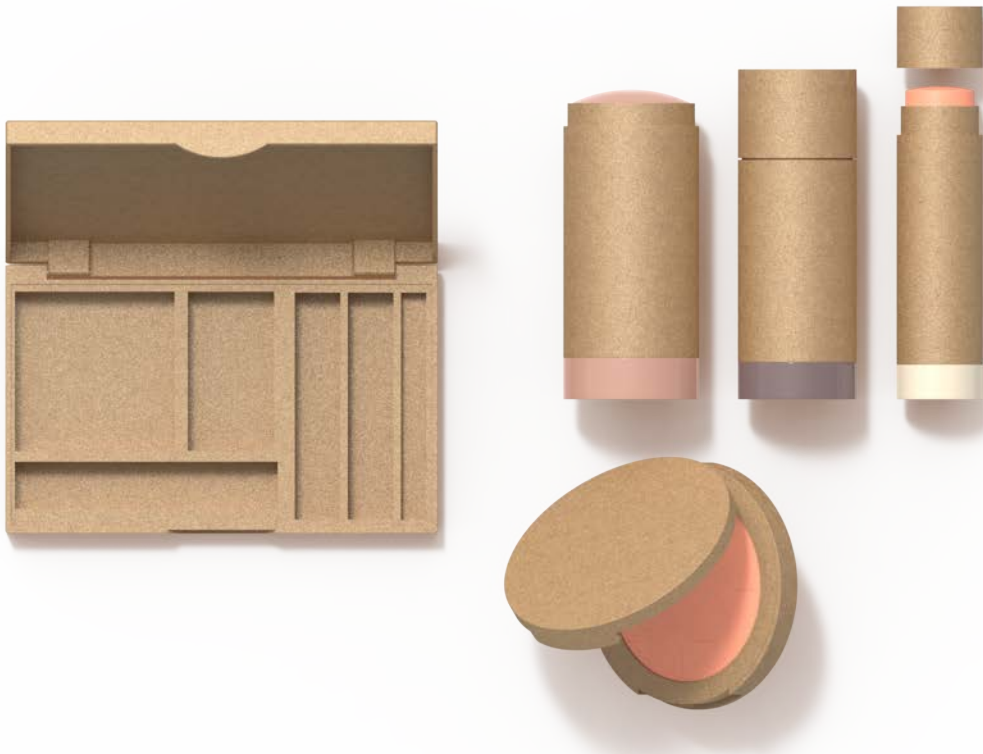
Endless Compact drives your sustainable goals with a refillable story. The removable fill pans snap easily in and out of place, providing countless customizable options.

SIZES

2.5g Z1001-001R

2.5g x 3 Z1001-003R

TERRA COLLECTION



FEATURES

Rice Husk/Plant Fiber Resin

Upcycled

Limited Decoration Capabilities

Terra Collection includes beautifully crafted compacts, palettes, and various sticks derived from plant fiber in order to elevate already existing components with a hint of modern nostalgia.

SIZES

Various Sizes/Configurations Available

LUMI BRUSHES



FEATURES

Flow-Through System

Powder and Cream Formulations

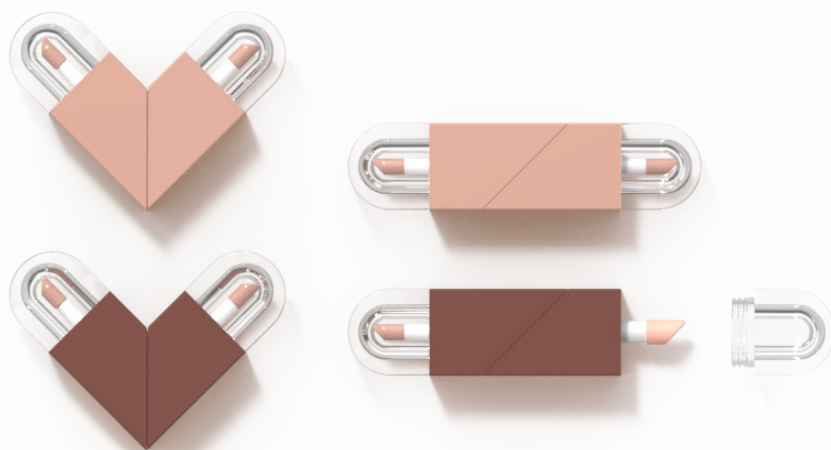
On-The-Go Application

Powder through your routine with this all-inclusive brush. The Lumi Brush is a flow-through pack, making it perfect for travel and quick touch-ups. Any powder formulations can be applied in a new way using this innovative technology.

SIZES

Various Sizes/Configurations Available

HEART2HEART



FEATURES

Multiple Configurations

Playful and Youthful Packaging

Various Applicator Options: Sponge, Doefoot

Heart Lipgloss offers a playful twist that creates a heart shaped configuration when assembled. When using, the heart can be undone to create a longer body for easier use. The dual ended option allows for multiple formulations.

SIZES

2mL + 2mL F1 ZZ335
2mL+2mL F1 ZZ335-1

SQUARE LIPGLOSS



FEATURES

Flexible and soft textured cap

Various deco options available

Comfortable and user-friendly grip

The Square Lipgloss offers a unique shape and size for lipgloss or eye formulations.

SIZES

Various Sizes Available

TRIANGLE QUAD



FEATURES

Multiple Configurations

Playful and Youthful Packaging

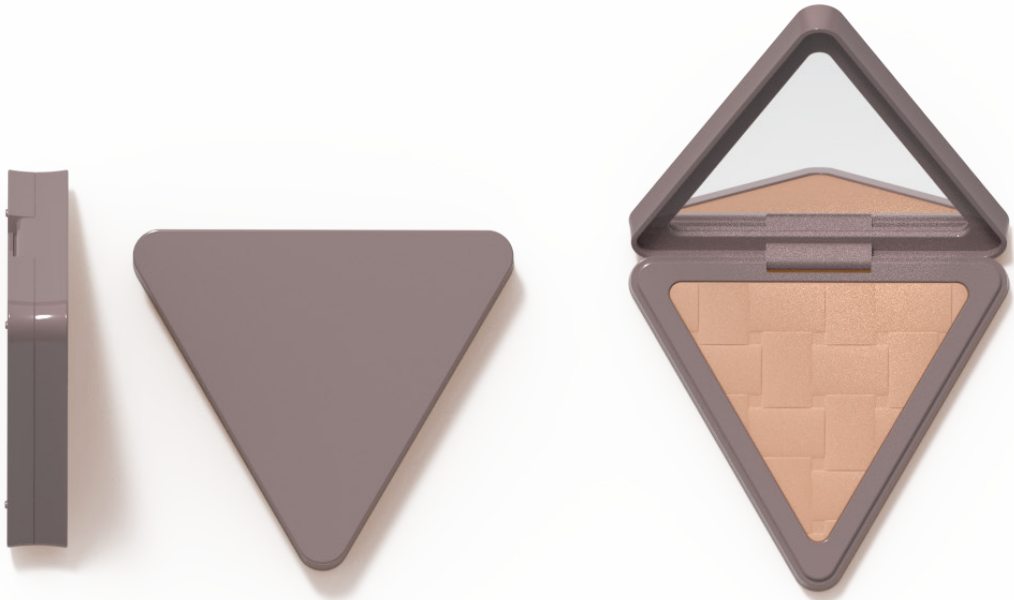
Travel Friendly

Triangle Quad is a foldable system that allows users to easily carry multiple formulas and colors while minimizing storing space. The compact folding case can be opened up to reveal up to four different shades.

SIZES

Various Sizes/Configurations Available

TRIANGLE COMPACT



FEATURES

Playful and Youthful Packaging

Travel Friendly

Triangle Compact is a folding compact with a built in mirror and unique triangular pan shape. The angular shape allows for a comfortable hold when sitting in the palm of hands.

SIZES

Various Sizes/Configurations Available

GEO COMPACT



FEATURES

Refillable

PET Exterior Compact
PP Interior Compact

Compatible with wet or dry
formulation

With minimalism driving itself to be a core fundamental value in design, our Geo Compacts are perfect for any “on-the-go” moments that need a quick touch up while encouraging consumers to keep only essentials on hand. With it’s simple and easy pop out feature, users can easily snap in and snap out different options.

SIZES

WET: 1.88g, DRY: 1.67g	F1 ZZ251
WET: 5.24g, DRY: 4.65g	F1 ZZ252
WET: 15.82g, DRY: 14.02g	F1 ZZ253

9-WELL COMPACT



FEATURES

Quad, 6 Well, 9 Well Available

Snap Fit Closure

Slim Design

9-Well Compact is one of our many offerings for multiple shade pack outs created for formulations such as eyeshadows, cream blushes, concealers, and more. The minimal, lightweight packaging highlights the various formula options offered.

SIZES

Various Sizes/Configurations Available

W1002-009

GO-GO GADGET



FEATURES

Travel Friendly

Multi-Formulation Options

Built-in Applicator

Go-Go Gadget offers for a unique brow, lip, or shadow combination holder. With a built-in applicator, mirror, and keyhole ring, this compact gadget is the perfect solution for on-the-go application.

SIZES

1g+3g+1g F1 ZZ336
3.5g F1 ZZ336-1

MASCARA



FEATURES

Various Wand Applicators

Mascara formulas are dependent on the brush and how it is applied. Our Mascara line offers a multitude of different wand options because all lashes are different. From microtips to cone tapered to a classic curved tip, the options are endless to find the perfect tip for you.

SIZES

Various Sizes/Configurations Available

LINER PENS



FEATURES

On-The-Go Application

Configurable Angled Tip

Various Tip Options: Felt, Brush, Stamps

Our various Liner Pens are the ideal solution to a quick and easy application process. With different closure options like felt tips, brush tips, stamp tips, and more, possibilities are endless! The combination of a slender handle and a configurable angle option allows for optimal control with minimal effort.

SIZES

0.8mL W1004-001

LINER PENCILS



FEATURES

Single and Dual Ended Options

Beauty Tool Applicators

By having options to add different tips like sharpeners to mascara tips, our various Liner Pencils help maximize efficiency for users. The various combinations provide an all-inclusive pack, making it perfect for travel or on-the-go application.

SIZES

Various Sizes/Configurations Available

POUCH WAND



FEATURES

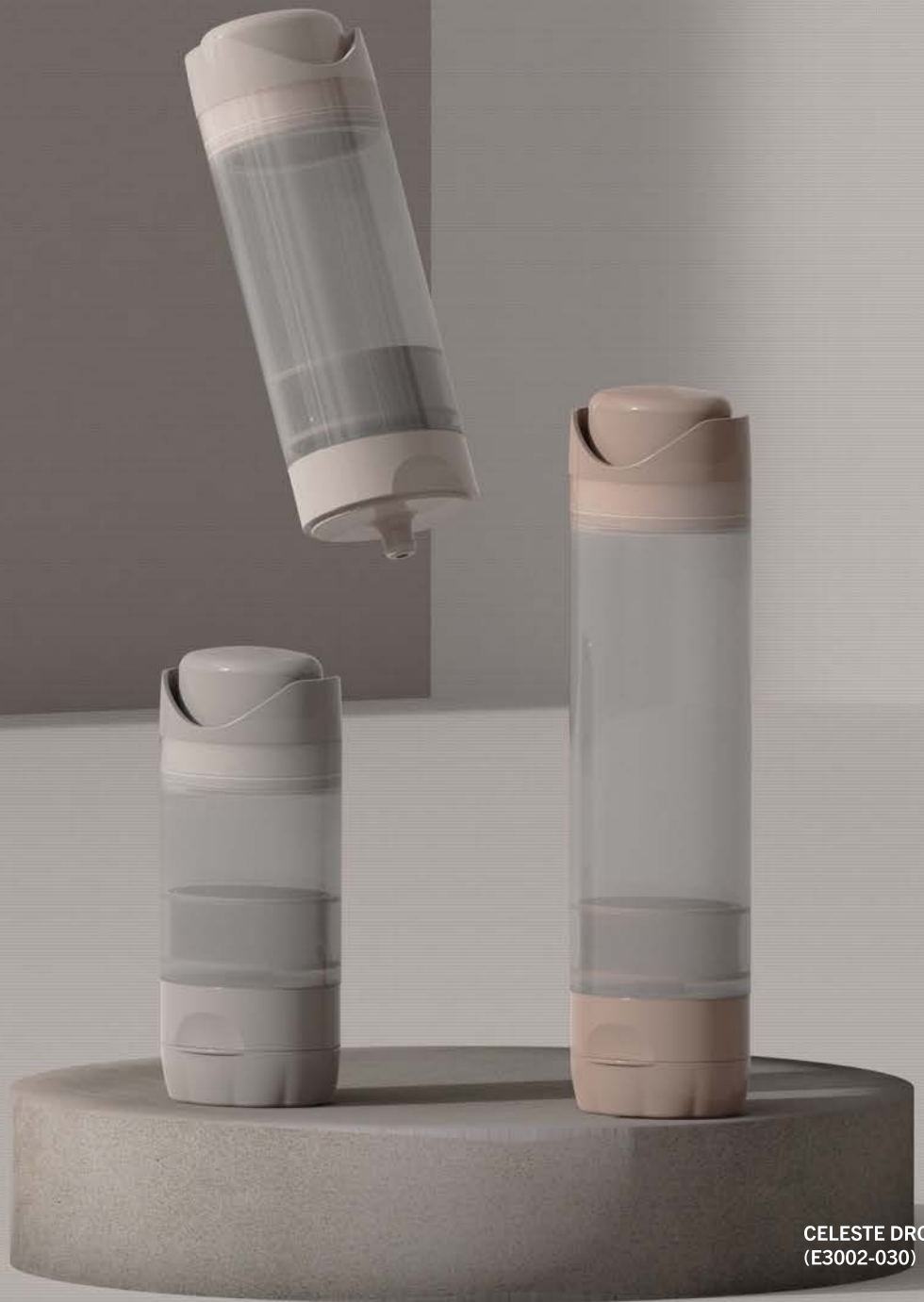
Minimizes Use of Plastic

Built in Applicator

Minimize the use of plastics with our Pouch Wand. By removing a traditional plastic bottle, we combined a doe-foot applicator with a pouch to offer a flexible, more sustainable pack out that can be used for lipgloss, concealers, eye creams, and more!

SIZES

Various Sizes/Configurations Available



CELESTE DROPPER
(E3002-030)

TURNKEY + FULL SERVICE

NF Beauty Group's Full-Service Team provides tailored fit services where your beauty ideas come to life.



SCAN FOR
FULL SERVICE OFFERINGS



SKINCARE

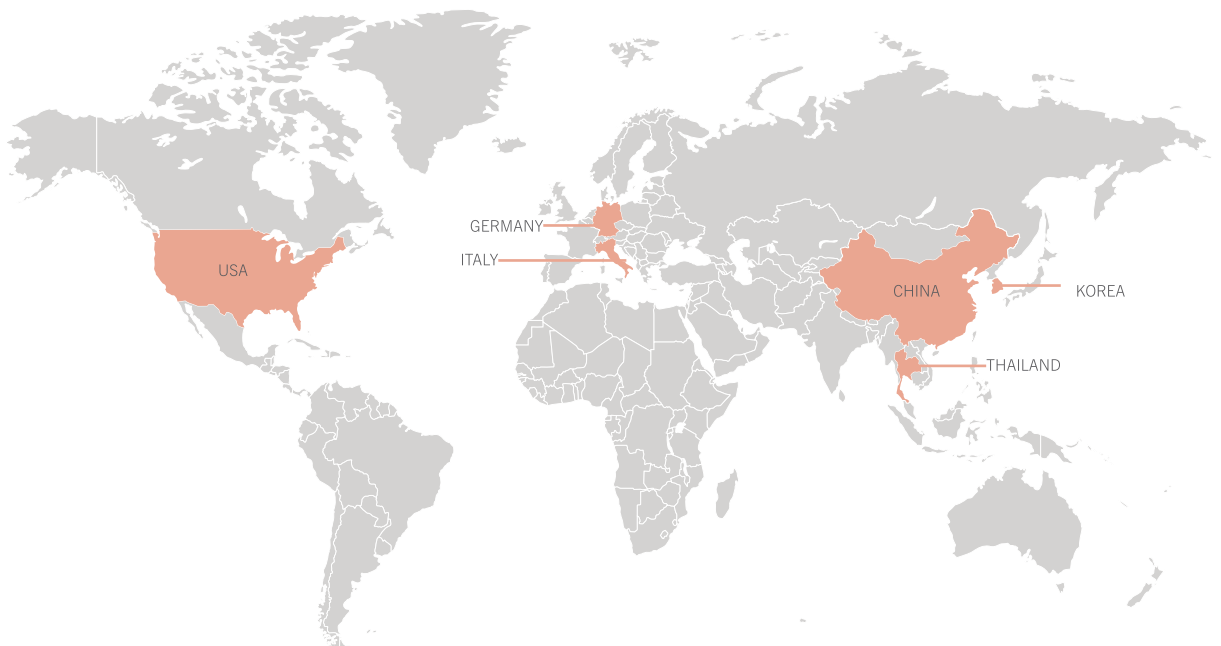


COLOR COSMETICS



BODY + HAIR CARE

OUR FORMULATION PARTNERS



EXCLUSIVE TECHNOLOGY

CERAMIDE LINE

Ceramides are key to skin health as they create a barrier that prevents permeability. This barrier locks in moisture, ultimately protecting the skin from dryness, irritation, and even environmental damage.

CERA TONER



- Cera Toner removes impurities while restoring your skin's pH level.
- The balance of water and oil offer both cleansing and rejuvenating properties with each application.

CERA CREAM



- Cera Cream's creamy, luxurious and delicate texture makes it ideal for moisturizing.
- It works to replenish the skin's moisture and restore its natural protective barrier, providing a skin-calming application.

CERA ESSENCE/SERUM



- Strengthens, lifts and firms the skin to keep moisture locked in.
- It preps the skin to absorb any subsequent products.
- Provides anti-aging and hydrating benefits.

CLEANICAL

BAKUCHIOL LINE

Cleanical focuses on natural product claims without sacrificing efficacy - Bakuchiol does just that. Bakuchiol is a plant derived extract that provides retinol-esque effects to the skin.

ESSENCE



- Bakuchiol Essence is a plant-derived anti-aging ingredient that plumps the skin from the inside out.

- Formula is highly concentrated, only containing clean ingredients.

AMPOULE



- Bakuchiol is an antioxidant ingredient that protects cells from environmental damage, improves the appearance of fine lines, reduces dryness, and smooths skin texture.

CREAM



- Bakuchiol Cream is a plant-derived anti-aging cream that nourishes and moisturizes the skin.

- Helps lock in moisture to keep the skin smooth and radiant without feeling greasy or sticky.

SKIP-CARE

BALM & FOAM

Skip-Care involves using fewer products to achieve the same results as a full skincare routine. These balm and foam cleansers effectively cleanse the skin while providing intense hydration and moisturization.

CLEANSING BALM



- Cleansing balm transforms from a sorbet like balm to a silky oil that gently lathers to a milky cream.
- Instantly melts away makeup, removes impurities, and gently exfoliates away dead skin cells.

CLAY CLEANSING FOAM



- Non-irritating cleanser with a soft and creamy texture.
- Rich and compact microbubbles perfectly cleanse the skin, resulting in brighter skin.

SLUSH CLEANSING BALM



- This slush formula easily melts down at skin temperature allowing light and smooth application and turns milky white for proper cleansing leaving no residue.
- Gentle exfoliant helps to dissolve and remove dead skin cells, improving skin tone and texture. It helps to soften and smooth the top layer of the skin.

WATER CLEANSING BALM



- It's a moisturizing water based cleansing balm that's cool and moist, so you can use it safely even on sensitive skin.
- The combination of cleansing water and hyaluronic acid fills your skin with moisture after washing your face!

THE NEW NORMAL

STICKS

The New Normal in skincare is sticks! Skincare sticks help save time, product and mess, whenever and wherever. This trending product form makes routines such as SPF, exfoliating, and even anti-aging uncomplicated, safe, and sanitary with just a swipe.

VITA-CORE STICK



- High Vitamin C content helps bring the coveted glow back to the skin. The effective ingredients brighten skin, increase collagen synthesis, and protect the skin against free radicals.

- This special filling technology, where cream balm is filled at the core and oil balm surrounds the core, gives the dual benefits of moisturizing from cream balm and protecting the skin from oil balm.

BAKUCHIOL STICK



- 3 Vitamins (Vit C [Ascorbic Acid], Vit E [Tocopherol], Vit D [Panthenol]) and Pure Fish Collagen boosts elasticity, reduces the appearance of wrinkles, and increases blood flow to the skin. 8 types of peptides also help with boosting your skin.

- This oil balm stick glides smoothly across the skin to form an oil film that hydrates the skin without leaving it dry or sticky.

CRYO STICK



- Cryo Stick is an ultra lightweight formula that instantly absorbs into the skin to provide hydrating, moisturizing, and soothing benefits, while restoring a strong skin barrier.

CERA-CORE STICK



- Ceramide content helps create a protective barrier while locking in moisture and preventing dryness.

- Features a special filling technology where a skin protecting oil balm surrounds a moisturizing cream balm core.

SKINIFICATION

HAIRCARE

Skinification is the concept of treating the skin on our heads like the skin on our faces. The scalp is now reaping the benefits of products that promote things such as exfoliating, hydrating, and even anti-aging.

SALT SHAMPOO



- Himalayan Salt and its abundant minerals cleanse dead skin on the scalp and strengthen the roots of the hair.

- Pink Salt and BHA remove excessive oil from the scalp and exfoliate dead skin, leaving it clean and fresh.

SCALP EXFOLIATOR



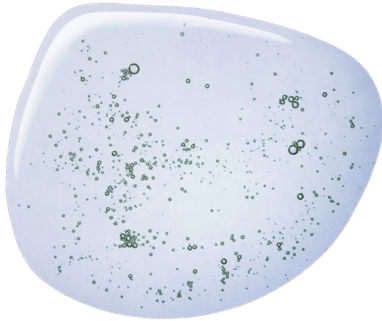
- This deep cleansing scalp scrub is infused with Dead Sea Salt & natural salt that refreshes the scalp.

- This formula contains microparticles of sea salt to thoroughly remove product build up and excess sebum from the pores of the scalp that regular shampoo may not be able to remove.

ACNE CARE & MISTS

Gen-Z consumers are impacting the industry with their enlightening shopping behaviors. Some of these behaviors range from reviving Y2K fashion and beauty such as body mists to becoming increasingly skincare savvy and adopting extensive regimens such as chemical serums early on in life.

**VERSAILLES MIST
LUMIERE MIST
MON PARIS MIST**



- Finely dispersed particles in the mist penetrate deeply into the body, allowing the skin to be moistened at a cellular level.

- Spray instantly eliminates dryness, and relieves fatigue, stress, and discomfort.

AHA, BHA, PHA, LHA PEELING ESSENCE



- The complex of AHA, BHA, PHA, and LHA, provides exfoliation while keeping your skin moisturized and hydrated.

-calms redness and swelling from angry acne blemishes to help reveal smoother clearer skin

BEAUTOPIANS

SKIN NOURISHING SENSORIALS

Beautopians find happiness in joy-inducing products that deliver quick and visible results. Each formula feature skin nourishing actives in a format that is both sensorial and efficaceous.

NATTO CREAM



- Stretches like natto, and sticks to the skin gently, wrapping around the skin while moisturizing.

- Concentrated ingredients nourish the skin thoroughly from the inside, making a tight and firm skin.

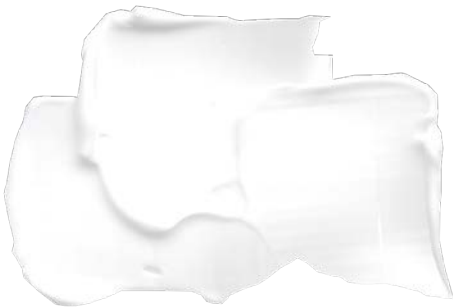
TOFU CREAM



- This cream has a fun texture of soft tofu. It breaks down and bounces like tofu.

- Filled with traditional fermented bean extracts, it boosts the elasticity and nutrition in the skin.

YOGURT CREAM



- Its watery and glossy texture leaves your skin brightened, boosting the elasticity and nutrition in the skin.

- Low molecular marine collagen boosts the skin elasticity.

CERA FLUID CREAM



- This liquid-type cream has a smooth texture that absorbs without feeling sticky or oily.

- It contains ceramide, the main ingredient of barrier enhancement, resurrection vinegar with strong vitality, and rose of jericho extract, which is excellent for soothing skin.



PLEASE CONTACT US

Sales@nfbeautygroup.com



www.nfbeautygroup.com

 [nfbeautygroup](https://www.instagram.com/nfbeautygroup)

NF BEAUTY GROUP

USA - HQ

2334 E. Valencia Drive,
Fullerton, California, 92831 USA
sales@nfbeautygroup.com
tel: +1-714-522-7707

KOREA

2206 Ho, 126, Beolmal-ro,
Dongan-gu, Anyang-si,
Gyeonggi-do, 14057 Korea
sales@nfbeautygroup.co.kr
tel: 82-31-360-7110

CHINA

5th Floor, Building 2, No. 175
Anshan Rd., Yuyao, Zhejiang,
315499 China
sales@nfbeautygroup.cn
tel: 86-0574-6218-0681