



Nf BEAUTYGROUP  
2025 CATALOG

# CONTENTS

## INTRODUCTION

Our Mission, Vision, and Values	03
Why NF Beauty Group?	04
Awards	05
Brands We've Worked With	06

## PACKAGING

Pumps	07
Droppers + Ampoules	19
Jars	25
Sticks	37
Tubes + Tottles	43
Color + Cosmetics	53





# GOOD THINGS COME IN GREAT PACKAGING

With over 20 years of industry expertise, we have successfully partnered with renowned brands such as L’Oreal, Fenty, Dermalogica, Versed, and Too Faced.

Welcome to our premier catalog, showcasing an array of top-tier packaging solutions and full-service options designed to elevate your beauty brand.

## OUR MISSION

To provide trend forward developments and relevant designs to our clients with our offerings.

## OUR VISION

To be a prominent leader with operations continuously expanding globally.

## OUR VALUES

To build successful and trusting relationships with our customers and suppliers around the world.

# WHY PARTNER WITH US?

At NF Beauty Group, we are more than a supplier—we are your strategic partner. With years of expertise and a global network of trusted resources, we are committed to delivering innovative, high-quality solutions tailored to your brand's needs.

From cutting-edge designs to sustainable materials, we ensure your products make a lasting impression. Our team works tirelessly to bring your vision to life, providing exceptional service and expertise every step of the way.



4



## DON'T SEE WHAT YOU'RE LOOKING FOR?

This catalog showcases only a fraction of what we can do. If you don't find exactly what you need, our sourcing specialists are here to help.

We excel at identifying, customizing, and delivering the perfect packaging or formulation to meet your unique requirements. Whether you're seeking a specific design, material, or feature, we will find the solution that aligns with your vision and brand goals.

If it exists, we'll source it—if it doesn't, *we'll help you create it!*



<p><b>COSMOPACK Awards</b></p> <p>COSMOPACK AWARDS FINALISTS CPNA - Ambit Tottle</p>	<p><b>DESIGNRUSH</b></p> <p>BEST PACKAGING DESIGN Celeste Dropper 2023</p>	<p><b>THE OPRAH MAGAZINE</b></p> <p>BEAUTY O-WARDS Fenty Skin - Hydra Vizor 2020</p>
<p><b>allure</b></p> <p>READER'S CHOICE AWARD Biossance - Squalane Rose Oil</p>	<p><b>allure</b></p> <p>BEST OF BEAUTY Eleven - Unrivaled Sun Serum</p>	<p><b>NEWBEAUTY</b></p> <p>NEW BEAUTY AWARDS GoopGenes - Face Oil 2022</p>
<p><b>Women'sHealth</b></p> <p>HEALTH BEAUTY AWARDS Biossance - Squalane Night Serum</p>	<p><b>BYRDIE</b></p> <p>SKINCARE AWARD Honest Beauty - Hydrogel Cream</p>	<p><b>AWARDS</b></p>

# OUR CLIENTS

---

**HOURGLASS**

**TULA**  
SKINCARE

**VERSED**



**BIOEFFECT**

**PAULA'S CHOICE**  
SKINCARE

**L'ORÉAL**

**G | R**

**Cetaphil**

**P&G**

**PETER THOMAS ROTH**  
CLINICAL SKIN CARE

**Perricone MD**

**SHANI DARDEN**  
SKIN CARE



**TATA HARPER**  
NEXT GENERATION BEAUTY

**SUNDAY**  
RILEY

 **TATCHA.**

**Kate**  
Somerville

**Briogeo™**

**cocokind**

*fresh*

**BIOSSANCE™.**

**Murad.**

**HONEST**  
BEAUTY®



*Too Faced*

beautyblender®

**Kamill**

**VEGAMOUR**

**FENTY SKIN**  
BY RIHANNA

**MISSHA** 

**DOLCE GLOW**  
BY ISABEL ALYSA

**goop**

**ERNO LASZLO**  
NEW YORK

**ANCORA**

**dermalogica**  
professional-grade skin care by The International Dermal Institute

---

We've had the opportunity to be a key contributor of packaging solutions for hundreds of brands in the industry.

# 01.

## PUMPS

Pumps are a go-to packaging solution in the skincare and beauty industry, prized for their functionality, hygiene, and precise dispensing. Ideal for lotions, serums, and cleansers, pumps ensure controlled application, reducing product waste while enhancing the consumer experience.

Their airless options also protect formulations from contamination and oxidation, extending shelf life and maintaining product efficacy. Available in a variety of designs, finishes, and eco-conscious materials, pumps can be tailored to align with a brand's aesthetic and sustainability goals.





## PULSE REFILL PUMP

*Refillable*

This airless pump is refillable and eco-friendly.

F3 M078 (50ml)

F3 M078-1 (100ml)



## ARC PUMP



The ergonomic Arc Pump provides comfort and ease of use with every press.

F4 AK032 (30g)

F4 AK032-1 (50g)



## STILL PUMP

*Targeting Dispensing, Refillable, Unique Button Design*



An offering of consistent, smooth precise targeted dispensing with a stylish design. Available in traditional and refillable versions.

H3002-030 (30ml)

H3002-030R (30ml)

H3002-50 (50ml)

H3002-050R(50ml)



## OIL PUMP

*Clean Dispensing System*



Featuring a unique mechanism that sucks back the oil after dispensing, this pump prevents dribbling and ensures every drop is used efficiently.

F3 ZZ489A (18/410)





## FLUX PUMP COLLECTION

*Refillable*

---

Large capacity bottles in a classic cylindrical shape with rounded corners provide a comfortable press design that conforms nicely to larger hands.

---

F3 L224 (30ml)

F3 L224-2 (100ml)

F3 L224-1 (50ml)

F3 L224-3 (150ml)





## NIMBUS MISTER

*PET Bottle, Fine Mist Spray, Round Cap and Bottle Options Available*

Offers a heavenly application and experience with a fine mist, creating an even refreshing coat to the skin.

- F3 R135-1H1S (60ml)    F3 R136H1 (120ml)
- F3 R135H1-1S (80ml)
- F3 R135H1 (100ml)



## PILLAR PUMP

*Premium Feel*



This sleek component features a glass outer wall for premium aesthetics, paired with a durable PP plastic inner bottle for product protection. Its capless pump design ensures effortless, one-handed use.

- J6 T014 (15ml)                      J6 T016 (50ml)
- J6 T015 (30ml)



## CHILL PILLS

*PET Bottle Pump, Spray Pump, Toner Closures Available*



The oblong 50:50 proportions provide a playful, eye-catching option with various different closure options.

- F3 ZZ337 (40ml)                      F2 ZZ239T (150ml)
- F3 ZZ338 (60ml)                      F3 ZZ455 (200ml)
- F2 ZZ238T (120ml)                      F3 ZZ339W (500ml)



**FEATURED  
PRODUCT**



**TWIN PUMP**

*Premium Feel, All Plastic Pump*

Crafted from premium glass, the capless pump dispenser easily delivers product without the fuss.

J6 T014 (15ml)

J6 T016 (50ml)

J6 T015 (30ml)

F3 XX136 (30ml)





## BALLOON PUMP

*Reduction in Plastic, Preservation of Formula*

The inner balloon collapses as the product is dispensed, pushing the formula out without exposing it to air. Minimize waste, protect product from oxidation, and deliver a more controlled dispensing experience.

Z3067-030 (30ml)

Z3067-050 (50ml)



## BOOST PUMP



This high-performance pump offers smooth and efficient product dispensing. The chubby design offers different look to your everyday pump.

F3 ZZ602 (15g)                      F3 ZZ603-3 (80g)

F3 ZZ602-1 (30g)

F3 ZZ602-2 (50g)



## DOSAGE PUMP

*Customizable Dispensing System, Unique User Experience*



With a simple twist to the right or left, this pump dispenses two customizable dosages, allowing users to tailor their product dosage with ease.

Z3075-030 (0.2cc/0.3cc)



## CELESTE PUMP

*Recyclable, Available w/ TPE Spring Pump, Monomaterial*



Embedded with a metal-free pump, this presents an efficient, sustainable design.

J3 T2006-1 (15ml)

J3 T2006-2 (30ml)

J3 T2006-3 (50ml)





## FRAME POUCH

*Refillable, Minimal Use of Plastic*

A hollowed out front and back plus a refillable pouch lend to plastic reduction.

F3 ZZ462 (300ml)



## CUBIE COLLECTION

*Monomaterial, Refillable, Youthful Design*

Featuring a refillable design, the softly rounded corners and sleek square shape bring a unique, youthful elegance to any product line. Crafted entirely from monomaterial PP, this family is designed for seamless recyclability.

F3 AE247R (30ml Pump) F4 AE130R (50g Jar)

F3 AE248R (50ml Pump) F4 AE131R (100g Jar)



## CENTER DISPENSE BOTTLES

*Modern Design, Hygenic Benefits*



With a sleek, ergonomic layout, the bottle is easy to use and ideal for one-handed operation, enhancing the overall customer experience.

Available in Various Sizes



**FEATURED  
PRODUCT****DUAL CHAMBER PUMP***Dual Chamber Pump Mechanism*

A rotating mechanism allows you to alternate effortlessly between two separate formula chambers.

C3043-25/25 (25ml + 25ml)



**FEATURED  
PRODUCT**

**18**



**CARRIE COLLECTION**

*Available with Various Closures*

Discover our larger capacity bottles with a rounded base—a perfect blend of practicality and style. The rounded base provides a stable, comfortable design, while the generous size delivers great value.

- F2 ZZ489 (50ml)      F2 ZZ489-3 (300ml)
- F2 ZZ489-1 (100ml)      F2 ZZ489-4 (355ml)
- F2 ZZ489-2 (200ml)      F2 ZZ489-5 (500ml)



# 02.

## DROPPERS + AMPOULES

Droppers and ampoules have become essential components in the skincare and beauty industry, combining precise dosage control with sophisticated design. These packaging solutions are ideal for highly concentrated serums, oils, and active treatments, ensuring every drop delivers maximum efficacy. Droppers offer controlled application, enhancing the consumer experience while minimizing product waste.

Available in a variety of customizable styles and materials, from eco-friendly glass to luxe finishes, droppers and ampoules elevate a brand's aesthetic while aligning with the growing demand for precision and premium skincare.



**FEATURED  
PRODUCT**



**CELESTE DROPPER**

*Recyclable, TPE Spring, Monomaterial*

With its TPE pump, the Celeste Dropper presents a metal-free alternative for medium to high viscosity formulas. Consisting of only 6 parts, it is an easy to recycle pack out optimizing convenience and simplicity.

- |                  |                  |
|------------------|------------------|
| E3002-015 (15ml) | E3003-030 (30ml) |
| E3003-015 (15ml) | E3003-050 (50ml) |
| E3002-030 (30ml) | E3002-050 (50ml) |





## RADIANCE DROPPER

*Recyclable, Monomaterial*

Crafted from a single material, polypropylene, this dropper is fully recyclable, streamlining the recycling process and reducing environmental impact.

F7 ZZ253 (30ml)



## MOON DROPPER

*Unique Bulb Shape, Bulb + Collar are Made with Bi-Injection*

A glass or plastic bottle combined with a fun, unique, moon shaped, bi-injection bulb dropper.

C7001-015 (15ml)

C7001-030 (30ml)



## PURE PRESS DROPPER

*Recyclable, Monomaterial, Ease of Use*

A gentle push button dropper, crafted from a single material, ensures control over each drop.

Z7031-030P (30ml)

Z7031-050P (50ml)





## HILL DROPPER

*Ergonomical Button, Precise Dosage*

Say goodbye to the conventional teat-shaped bulb and hello to a new perspective.

F7 XX411 (15ml)

F7 XX411-1 (30ml)

F7 XX411-1 (50ml)



## TONIC DROPPER

*Precise Dispensing, Monomaterial, TPE Dispenser*

Inspired by the precision of pharmaceutical design, the monomaterial Tonic Dropper offers an esthetician experience like no other.

Z7037-010 (10ml)



## THICC DROPPER

*Heavy Luxe Base, Unique Size Impression*

A heavy luxe base and squatty appearance set this dropper apart from the competition.

F7 XX401-1 (30ml)

F7 XX401 (50ml)



**FEATURED  
PRODUCT**



**PILOT AMPOULE**

*Recyclable, TPE Spring, Single & Double Wall*

TPE pump mechanism is great for evacuating thicker formulations, while offering a direct and precise application.

- E3001-005 (5ml)    E3001-0050 (50ml)
- E3001-0015 (15ml)
- E3001-0030 (30ml)





## AUTOFILL DROPPER

*Ease of Use, Precise Dispensing*

With a simple twist, the dropper automatically fills with the desired amount of product, making it perfect for products that require precise measurement.

Various Sizes and Dropper  
Styles Available

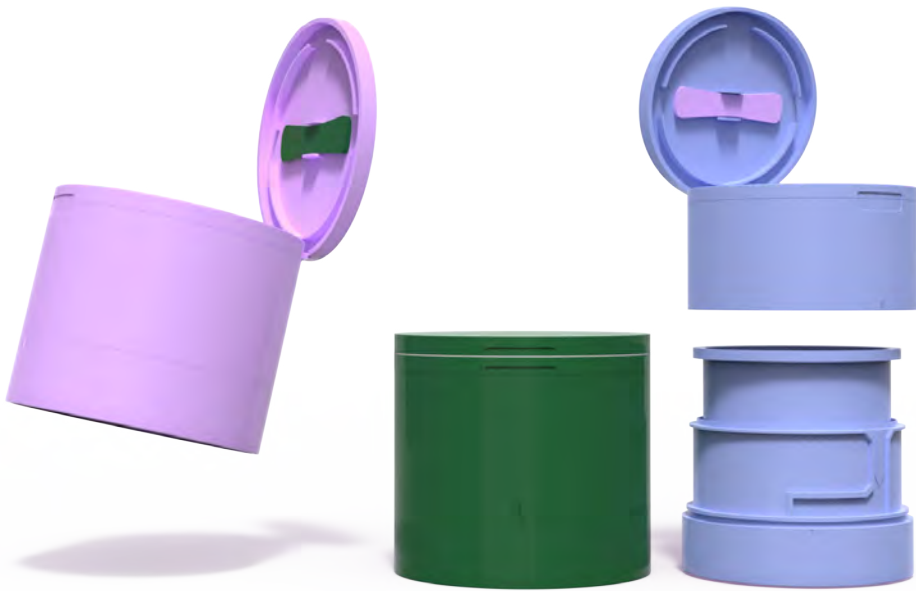


# 03. JARS

Jars are a cornerstone of skincare and beauty packaging, offering versatility and elegance for a wide range of formulations, from rich creams to exfoliating scrubs. Known for their ease of use and ability to showcase luxurious textures, jars enhance the consumer experience by combining functionality with aesthetic appeal.

Available in various materials, including eco-friendly glass, recyclable plastics, and high-end acrylics, they can be customized with finishes like metallics, frosts, or sleek minimalist designs.





## CHUNK JAR

*Monomaterial PP, Refillable, Easy to Open Flip Cap*

Bold and sturdy, this large capacity refillable jar is ideal for creams, masks, and thick formulations. The built in spatula allows for a clean application process.

F4 ZZ353 (100ml)

F4 ZZ353-1 (150ml)

F4 ZZ353-2 (200ml)



## NOVA JAR

*Monomaterial PP*



Combining functionality with style, this is designed to elevate any beauty routine.

G12KO001-50g (50g)      G12KO004-200g (200g)  
G12KO003-100g (100g)      G12KO005-250g (250g)



## ORBIT REFILL JAR

*Monomaterial PP, Refillable, Rounded Corners*



The sleek design features a rounded cap that adds a playful, “cute” aesthetic. Crafted with eco-conscious materials, including a PP outer cap, inner cap, and refillable and easily separable jar structure.

F4 L090 (30ml)  
F4 L090-1 (50ml)



## FLEX JAR

*Monomaterial PP, Recyclable, Square and Circular Options Available*



A sustainable, monomaterial airless jar that features a unique pumping mechanism where a button actuator “flexes” to dispense.

F4 AK030 (30ml)  
F4 AK031 (50ml)







NIF BEAUTYGROUP

NIF BEAUTYGROUP

## **GRINDING BALM JAR**

*Monomaterial PP, Refillable Options Available, 50/50 Proportions*

This innovative packaging grinds just the right amount of product with a simple twist, delivering a mess-free, controlled application every time. Perfect for solid balms, body butters, or concentrated treatments.

B4007-050 (50g)



## ALL-OUT GLASS REFILL JAR

*Refillable, PP Inner Jar, Keepsake Outer Jar*

The outer bottle made of glass offers a keepsake bottle with various deco opportunities and luxurious tactility. The inner PP bottle allows for compatibility to a wide range of products.

J3 T012 (30g)

J6 T013 (50g)



## GUASHA JAR

*Magnetic Applicator, 2 Cap Styles Available*

This jar features a built-in magnetic guasha applicator, perfectly contoured to glide over the skin for enhanced product absorption and a relaxing massage experience.

Z4078-050 (50g)

Z4078-050B (50g)  
Upside Down Jar



## ONE-TOUCH JAR

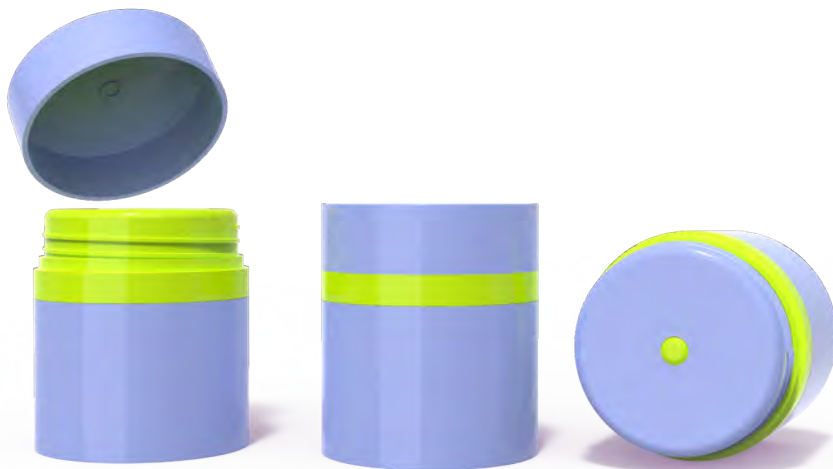
*Efficient Cap Removal, Ease of Use, Plastic and Glass Jar Option Available*

Innovative cap design allows for quick and easy access to your product. Unlock the jar with just one touch, releasing the cap with just the press of a button.

Z4001-050 (50g)



**FEATURED  
PRODUCT**



**CELESTE JAR**

*Recyclable, TPE Spring, Monomaterial, Locking Shoulder*

An airless, springless narrative with a unique dispensing technology story that is embedded with the material of the pump.

F3 L208 (50g)



**ECO JAR**

*All Aluminum Doublewall Cap, Patented Easy to Remove Liner, Recyclable*

A fully recyclable double aluminum cap and glass jar with a easy to remove premium liner.

N4001-030 (30g)

N4001-050 (50g)





## FLOAT JAR

*All PP Recyclable Jar, Sustainable, Recyclable, Unique Design*

A heavyweight, premium, refillable plastic jar, designed to blend sustainability with striking aesthetics. The cap, when closed, sits gracefully like a halo around the jar.

N4012-50 (50g)

N4012-80 (80g)

N4012-60 (60g)

N4012-100 (100g)



## BLOCK JAR

*Glass, Refillable, Luxe, Keepsake Outer Jar*

Double wall square glass outer jar with a refillable plastic inner jar.

F6 ZZ451 (15g)

F6 ZZ451-1 (30g)

F6 ZZ451-2 (50g)



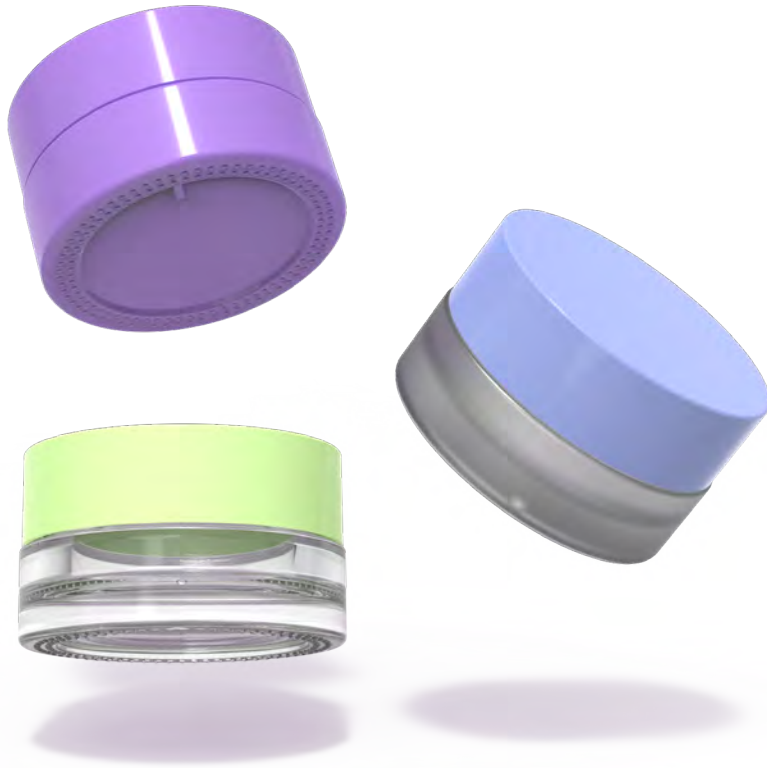
## STRATA JAR

*Recyclable, Artwork Alignment Capability, Monomaterial*

Features dual compartments that stack seamlessly, allowing you to package complementary products. Made entirely from a single recyclable material, this jar simplifies the recycling process, making it an ideal environmental choice.

Z4020-25/25 (25g + 25g)





**CALIBRE JAR**

*Artwork Alignment Capability, Low Profile*

Small glass jar with a shallow fill area and artwork alignment capabilities.

J6 T006 (10g)



**FEATURED  
PRODUCT**



**SLICE JAR**

*Recyclable, Built In Spatula, Refillable*

Comes equipped with a thoughtfully integrated spatula, ensuring each application is clean, hygienic, and precise.

- F4 M085-1 (50g)
- F4 M086-1 (100g)



## **DON'T SEE WHAT YOU'RE LOOKING FOR?**

This catalog showcases only a fraction of what we can do. If you don't find exactly what you need, our sourcing specialists are here to help.

We excel at identifying, customizing, and delivering the perfect packaging or formulation to meet your unique requirements. Whether you're seeking a specific design, material, or feature, we will find the solution that aligns with your vision and brand goals.

If it exists, we'll source it—if it doesn't, we'll help you create it!

# 04.



## STICKS

Stick packaging is transforming the beauty and skincare industry with its unique blend of convenience, versatility, and sustainability. Designed for the modern, on-the-go lifestyle, it offers effortless portability and precise application, making it ideal for targeted use while reducing product waste. Its innovative format supports a wide variety of formulations, from solid skincare and SPF to makeup and deodorants.

Beyond functionality, stick packaging meets the demand for cleaner, more hygienic solutions with no-touch application, enhancing consumer confidence. Additionally, its eco-conscious designs, including refillable and recyclable options, align with the growing emphasis on sustainability.

**ALL-OUT 100 STICK***Reduce Formulation Waste, 100% Propelling Mechanism*

No more excess leftover product! All-Out 100 Stick fully pushes out the piston beyond standard length to minimize formula waste.

H2008-010 (10g)

H2008-020 (20g)





## ARC STICK

*Monomaterial PP or PET Economical*

Lightweight yet durable, this stick is cost-effective, minimizes material usage without compromising functionality, and meets demands for circular packaging solutions.

F2 ZZ466 (3.5g) PET Version      F2 ZZ466-1 (3.5g) PP Version



## AURA STICK

*Refillable, Premium Feel, Sustainable*

Crafted entirely from aluminum, this refillable stick offers a sophisticated, high-end feel that resonates with luxury-conscious consumers.

F2 ZZ488 (4g)



## POCKET STICK

*All PP Stick, Monomaterial, Sustainable, Recyclable*

Designed with sleek, ergonomic curvatures, Pocket Stick ensures precise application. Its functional design makes it ideal for on-the-go convenience while staying sustainable.

Z2072-020 (20g)      Z2072-030 (30g)





## FORM STICK

*Monomaterial PP, No Waste, 3 Shapes Available*

Maximize product usage while minimizing waste. Available in three distinct shapes, this versatile stick features a unique dispensing system with a twist base and an upside-down cap, expertly crafted to contour to the natural curves of the face.

H2010-020 (20g  
Oval)

H2010-020W  
(20g Water  
Droplet)

H2010-020L  
(20g Leaf)

## **AIRTIGHT MONO STICK**

*Airtight, Monomaterial, Recyclable*

---

Securely sealed to keep products free from air exposure when closed.

---

Z5057-010 (10g)    Z5048-020 (20g)

Z5058-020 (20g)

## **TUBE STICK**

*360° Offset Printing Capabilities,  
Maximize Decoration Capabilities*

---

Unlock a wider, more intricate range of decoration capabilities for more vibrant designs that stand out with the combination of a tube cap and a stick base.

---

J5 T004 (8ml)





## AMMO STICK

*Refillable, PP Inner Bottle, Propel/Repel Mechanism*

With the durable outer case and easy to swap refill cartridges, our Ammo Stick creates a lasting circular lifetime. With the initial production of plastic, brands are able to take sustainability into their own hands.

30g F2 ZZ311

50g F2 ZZ312



## DROPLET STICK

*Ergonomic Droplet Shape, Propel/Repel Mechanism, Top/Bottom Fill Options*

Elevate your makeup game with a twist-up stick that's shaped like a teardrop, granting you unparalleled control and precision for flawless application on your face.

15g H2002-015

20g H2002-020B

15g H2002-015E

20g H2002-020 (TVersion)



## HELIX STICK

*Recyclable, Refillable, Monomaterial*

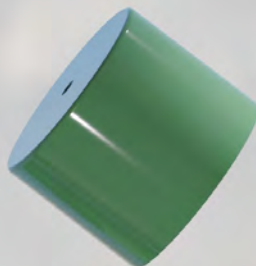
Helix Stick highlights a monomaterial lipstick component that is made of monomaterial PET, helping emphasize the sustainable storyline.

5g F1 ZZ303

5g F1 ZZ303R



# 05.



## TUBES + TOTTLES

Tubes, with their squeezable design, offer easy product application while minimizing waste, allowing users to get every last drop. Tottle packaging, with its unique blend of bottle and tube elements, provides added flexibility, enabling consumers to control product dispensing precisely and efficiently.

With increasing demand for sustainability, both tube and tottle packaging offer recyclable and eco-friendly options, aligning with the growing consumer preference for responsible beauty. The durability and portability of these packaging types also make them ideal for travel and everyday use, enhancing the overall customer experience.



## REFILLABLE ROLLER

*Available with PP or Stainless Steel Ball,  
Refillable, Monomaterial*

Replace one-time use rollerballs with a double wall body feature with a keepsake outer bottle.

F2 M016 (50g)

F2 M017 (75g)





## CHUBBY TOTTLE

*Unique Design Tottle, Slim & Easy to Hold, Sustainability*

With its adorable, squatty silhouette, this tottle offers a fresh, playful aesthetic. Its compact, ergonomic shape feels great in hand but also maximizes portability.

F5038-030 (30ml)    F5038-050 (50ml)  
F5038-040 (40ml)



## ROUND DISC TUBE

*Easy Dispense System, Available in Single or Multi-Layer*

Designed for effortless dispensing, Round Disc Tube offers a clean, controlled application with every use, ensuring a mess-free experience.

Available in Various  
Sizes/Diameters



## AXIOM AIRLESS TUBE

*Easy Dispense System, Capless Design, Available in Single or Multi-Layer*

Say goodbye to twisting, flipping, or losing caps. The capless airless pump design ensures quick and effortless use, while protecting formulas from exposure.

Available in Various  
Sizes/Diameters



## **AMBIT TOTTLE**

*Slim, Sleek Design, Multi-Layered Bottle,  
Customizable Actuator Plate*

---

A racetrack configuration with an elongated side press disc cap for maximum use of store display space.

---

J5 T001 (35ml)

J5 T002 (50ml)





## **AMBIT TUBE**

*Slim, Sleek Design, Available in Single or Multi-Layer, Customizable Actuator Plate*

---

A unique tube featuring a racetrack configuration flip cap that enhances both aesthetics and functionality.

---

Available in Various  
Sizes/Diameters



## SLIM TOTTLE

*Slim, Sleek Design, Available in Single or Multi-Layer, Maximizes Shelf Space*

Great fit for travel and storage with a small footprint, the thin packaging design maximizes the use of vertical space.

F5012-030 (30ml)

F5012-050 (50ml)



## SOL TUBE

*Recyclable, Built-in Header*

Integrated molding requires no additional tube heading, resulting in a reduction of plastic manufacturing.

Available in Various  
Sizes/Diameters/  
Closures



## PILLOW TOTTLE

*Soft TPU Applicator, Precise Application, Unique User Experience*

A soft TPU applicator redefines convenience and precision, making it a gentle application.

Z5006-060 (60ml)



**FEATURED  
PRODUCT**



**APPLICARE TOTTLE**

*Precise Application, Unique User Experience,  
Interchangeable Applicator*

Dispense just the right amount using our lip and dropper tip applicators.

G5005-020 (10ml)

G5006-015 (15ml)

G5007-010 (20ml)



**FEATURED  
PRODUCT**



50

**PRISCILLA DROPPER**

*Spot Dropper, Sostenibile (PE/PP)*

A sleek dropper designed for precise application of serums and oils.

G5035-035

G5036-050

G5035-050

G5037-035

G5036-035

G5037-050



**FEATURED  
PRODUCT**



**LUMINOUS TOTTLE**

*Flexible, Soft Bottle, Precise Application*

Tip provides precise application and bottle can be easily squeezed for easy control.

- F5 ZZ055 (30ml)    F5 ZZ056-2 (100ml)
- F5 ZZ056-1 (60ml)



# 06.

## COLOR + COSMETICS

In the ever-evolving beauty industry, color cosmetic packaging plays a vital role in defining a brand's identity and elevating the consumer experience. It's not just about containing the product—it's about creating an emotional connection, enhancing functionality, and standing out in a competitive market.

From sleek, modern designs to vibrant, eye-catching options, packaging for lipsticks, eyeshadows, foundations, and more serves as both a visual and tactile representation of the brand's promise.



FEATURED  
PRODUCT

## AL MASCARA

*Monomaterial Aluminum, Easy Application*

A sleek, minimalist solution gaining traction in the beauty industry. Unlike traditional mascara brushes with bristles, the metal rod applicator is designed to deliver precise application, often used for lash separation, tinting, or creating a clean, natural look.

F1 ZZ410 (9.5ml)



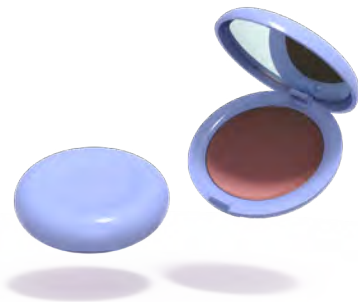


## TUBE MASCARA

*Customizable Design, Reduction of Plastic*

With its squeezeable flexibility, reduce less waste and achieve better product retrieval. The minimalist design of a tube bottle is ideal for on-the-go lifestyles with its light and compact pack out.

F1 ZZ431 (D19)



## DIVOT COMPACT

*Ergonomic, Youthful Design*

With a subtle central ergonomic divot that naturally contours to the hand, this packaging delivers an unmatched tactile experience, creating an instant connection between the user and the brand.

F1 ZZ414 (10g)



## SHARP & TWIST PEN

*Easy to Recycle, All-In-One, Multi-functional*

Introducing our all-in-one, sustainable twist-to-dispense pencil component, crafted entirely from durable polypropylene, with a built-in sharpener and smudging sponge.

F1 ZZ417 (0.8ml)



## **4 WELL COMPACT**

*Refillable, Monomaterial PET*

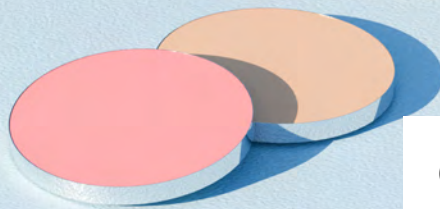
---

This refillable monomaterial PET four-well compact is perfect for creating a customizable DIY experience.

---

F1 ZZ415 (4 Well - 1.5g Each)





## **6 WELL COMPACT**

*Refillable, Monomaterial PET*

---

This refillable monomaterial PET six-well compact is perfect for creating a customizable DIY experience.

---

F1 ZZ416 (6 Well - 1.5g Each)



## PRISM COMPACT

*Trendy, Magnetic Closure, Holographic Decoration Capability*

The Prism Compact's innovative twist mechanism reveals the product with a satisfying magnetic click, securely holding the lid at the corner for easy access.

F1 ZZ430 (5 Well)



## TWIST MASCARA

*Unique User Experience, Precise Application*

A curved wand turns with each click to match the natural contour of the lash.

F1 ZZ190 (15ml)



## BOUNDLESS JAR

*Refillable*

Designed for easy refills, this durable and sleek jar offers a premium experience while reducing single-use packaging waste.

F1 ZZ234B-1R (15g)



**FEATURED  
PRODUCT****SCULPT & TWIST PEN**

*Monomaterial PP, All-In-One, Multi-functional*

Introducing our all-in-one, sustainable twist-to-dispense pencil component, crafted entirely from durable polypropylene, with a built-in sharpener.

F1 ZZ417-1 (0.8ml)





## ANGLED LIPSTICK TUBE

*Easy Application, Various Applicators Available*

With our user-friendly tube, you can dispense just the right amount of your favorite skincare, lip, or eye products with ease and apply using our angled applicator tip for precision and comfort.

Various Diameters and Applicators Available



## POCKET LIP BALM

*Travel Friendly, Unique Application*

This portable lip balm features an ergonomic design and a unique dispensing system, making it the ultimate travel companion.

Z1026-007 (6.5ml)



## POWDER PUFF

*Direct Application, Locking Function*

This innovative bottle features a built-in puff applicator, designed for seamless, mess-free use. Whether it's setting powder, blush, or dry shampoo, this all-in-one design ensures precise and even application every time.

F1 ZZ362 (10g)





## MONUMENT LINE

*Glass Construction, Heavy Base, Luxe Look & Feel*

A luxe glass bottle with a heavy base combined with various closure options - Pump, Doefoot Applicator, and Dropper.

J6 T011 (30ml)



## LUMINA STICK

*Recyclable, Refillable, Monomaterial*



Refillable and luxury in one - a heavy feel while reducing waste.

F1 ZZ371-1R (3.5g)

F1 ZZ371-2R (3g)



## ANGLED EYELINER PEN

*Unique User Experience, Precise Application*



A slender handle with a configurable angle option for optimal control.

W1004-001 (0.8cc)



## **DON'T SEE WHAT YOU'RE LOOKING FOR?**

This catalog showcases only a fraction of what we can do. If you don't find exactly what you need, our sourcing specialists are here to help.

We excel at identifying, customizing, and delivering the perfect packaging or formulation to meet your unique requirements. Whether you're seeking a specific design, material, or feature, we will find the solution that aligns with your vision and brand goals.

If it exists, we'll source it—if it doesn't, we'll help you create it!



www.nfbeautygroup.com

 nfbeautygroup



#### USA - HQ

2334 E. Valencia Dr.,  
Fullerton, California, 92831  
USA  
sales@nfbeautygroup.com  
tel: +1-714-522-7707

#### KOREA

709 Ho, 126, Beolmal-ro,  
Dongan-gu, Anyang-  
si, Gyeonggi-do, 14057  
Korea  
sales@nfbeautygroup.  
co.kr  
tel: 82-31-360-7110

#### CHINA

5th Floor, Building 2, No.  
175 Anshan Rd., Yuyao,  
Zhejiang, 315499 China  
sales@nfbeautygroup.cn  
tel: 86-0574-6218-0681

